

TABLE 6A FATAL AND INJURY TRUCK COLLISIONS BY MONTH 2009-2013

MONTH*	2009		2010		2011		2012		2013	
	Fatal	Injury	Fatal	Injury	Fatal	Injury	Fatal	Injury	Fatal	Injury
January	19	415	15	353	18	360	15	411	13	426
February	13	355	19	354	19	348	15	332	18	340
March	18	378	19	390	24	426	22	407	17	417
April	20	405	10	423	20	385	13	396	24	424
May	20	376	17	390	17	424	21	437	26	451
June	21	440	22	405	17	453	20	422	17	459
July	19	413	16	396	23	423	15	424	23	436
August	27	427	19	504	24	478	23	515	25	487
September	18	447	24	490	17	477	28	415	20	469
October	17	492	20	493	29	484	21	506	30	523
November	17	339	17	434	16	495	25	456	19	419
December	27	387	16	433	21	402	17	371	24	358
TOTAL	236	4,874	214	5,065	245	5,155	235	5,092	256	5,209

\*May be under reported for non-CHP agencies due to a traffic collision report form revision of July 2003. (See Preface for details.)

TABLE 6B PERSONS KILLED AND INJURED IN TRUCK COLLISIONS BY MONTH 2009 - 2013

MONTH*	2009		2010		2011		2012		2013	
	Killed	Injured	Killed	Injured	Killed	Injured	Killed	Injured	Killed	Injured
January	21	578	16	485	19	501	15	590	13	586
February	14	504	23	487	22	499	17	458	18	475
March	21	558	21	570	26	595	23	610	22	612
April	21	588	11	584	25	523	14	574	24	609
May	22	553	19	536	19	583	21	600	28	651
June	26	630	25	581	19	629	24	660	18	696
July	22	599	18	610	26	620	16	619	27	650
August	31	619	22	720	26	652	24	735	28	712
September	19	655	25	709	21	706	32	585	21	699
October	23	687	20	671	34	689	23	742	33	728
November	21	475	19	597	18	683	34	645	20	579
December	30	536	17	607	23	569	18	522	26	514
TOTAL	271	6,982	236	7,157	278	7,249	261	7,340	278	7,511

\*May be under reported for non-CHP agencies due to a traffic collision report form revision of July 2003. (See Preface for details.)

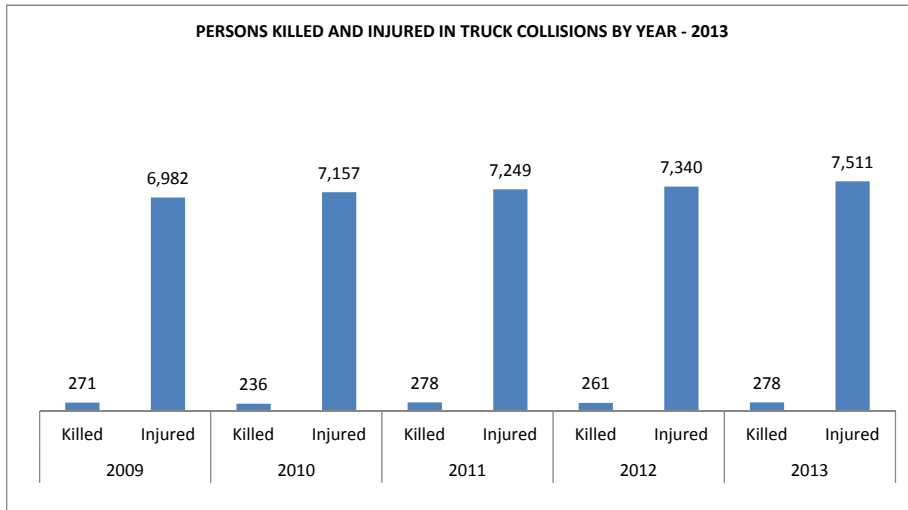


TABLE 6C FATAL AND INJURY TRUCK COLLISIONS BY COUNTY 2009 - 2013

COUNTY*	2009		2010		2011		2012		2013	
	Fatal	Injury	Fatal	Injury	Fatal	Injury	Fatal	Injury	Fatal	Injury
Alameda	9	246	6	220	7	236	3	238	9	244
Alpine		2				2				
Amador	1	7		6	3	3		5		2
Butte		13	1	27		20	2	21	2	22
Calaveras		1	1	5		2		6		9
Colusa	1	14	1	9	1	11	1	11	1	13
Contra Costa	11	77		72		63	3	72	4	72
Del Norte	1	4	1	3	1	1		4	1	2
El Dorado		16		8	3	15		9		11
Fresno	8	139	10	135	8	150	11	123	10	127
Glenn	2	6	1	12	1	3	1	4	1	7
Humboldt	1	8	2	13	2	15		22	2	16
Imperial	3	22	5	35	1	32	5	39	7	36
Inyo	1	4		11		2		2		2
Kern	19	158	16	206	19	207	19	193	19	188
Kings	4	33	1	22	1	38	5	38	3	36
Lake	2	13	1	10	1	7	1	11	2	7
Lassen		8		6	1	2	3	5		10
Los Angeles	46	1,464	47	1,535	47	1,607	39	1,591	53	1,689
Madera	3	26	3	38	3	43	1	50	4	36
Marin		26	1	19		19		21	1	13
Mariposa		1		1				1	1	1
Mendocino	3	20	1	10	1	14	4	9	1	17
Merced	5	70	4	64	6	72	6	65	5	55
Modoc		2		3		1		4		2
Mono		4		3		6	1	8	1	7
Monterey	1	52	4	55	3	30	1	40	3	47
Napa	1	18	2	19		19		19	1	22
Nevada		30		24	1	35	1	21	1	12
Orange	5	298	5	351	5	336	7	315	12	300
Placer	2	32	1	46	2	46	2	37	1	22
Plumas		8		7	1	7		4	1	5
Riverside	14	297	6	293	23	292	19	305	10	325
Sacramento	10	183	4	177	7	174	4	181	5	186
San Benito	2	8	1	15	1	16	2	10		15
San Bernardino	29	410	24	425	29	438	29	412	26	464
San Diego	10	242	8	228	14	253	10	248	10	240
San Francisco	2	44	3	52	3	54	1	46	6	43
San Joaquin	6	190	6	152	8	171	9	184	14	185
San Luis Obispo	3	20		25	2	27	4	21		24
San Mateo	4	59	1	57	1	56	3	55		64
Santa Barbara	4	26	5	29	4	34	5	36	1	42
Santa Clara	2	77	3	111	3	95	4	92	4	96
Santa Cruz	1	17		21	2	26	1	24		24
Shasta	2	34	3	39	3	27	2	41	1	24
Sierra		1		7		2		2	1	1
Siskiyou		21	3	13	2	10	2	21		17
Solano	3	62	3	60	1	49	2	46	6	49
Sonoma	1	44	1	50		65	2	46	1	63
Stanislaus	3	98	5	100	2	89	5	95	4	83
Sutter		13	4	13		13		14	2	14
Tehama		12	1	17	3	13	1	17	2	15
Trinity		4	1	2		2		5		2
Tulare	8	67	9	84	9	92	7	73	10	84
Tuolumne		8	1	8	1	7		6		6
Ventura	2	73	2	79	4	62	5	83	5	73
Yolo		34	3	27	3	29	1	33	1	27
Yuba	1	8	3	6	2	15	1	8	1	12
TOTAL	236	4,874	214	5,065	245	5,155	235	5,092	256	5,209

\*May be under reported for non-CHP agencies due to a traffic collision report form revision of July 2003. (See Preface for details.)

TABLE 6D PERSONS KILLED AND INJURED IN TRUCK COLLISIONS BY COUNTY 2009-2013

COUNTY*	2009		2010		2011		2012		2013	
	Killed	Injured	Killed	Injured	Killed	Injured	Killed	Injured	Killed	Injured
Alameda	11	322	6	293	7	316	3	307	10	335
Alpine		4				2				
Amador	1	10		9	3	4		9		2
Butte		18	1	36		22	2	38	3	33
Calaveras		2	1	6		2		7		11
Colusa	1	24	1	12	1	15	1	18	2	23
Contra Costa	11	110		88		79	4	106	5	96
Del Norte	1	4	1	4	1	1		4	1	2
El Dorado		24		11	3	20		11		13
Fresno	14	216	12	238	11	232	15	197	10	209
Glenn	2	12	1	20	1	4	1	8	1	9
Humboldt	1	11	2	18	2	23		31	2	21
Imperial	8	29	6	44	1	46	6	53	7	54
Inyo	1	7		13		2		3		2
Kern	27	250	18	322	24	306	24	288	19	283
Kings	4	58	1	32	1	58	5	62	4	58
Lake	2	26	1	13	1	8	1	13	4	16
Lassen		9		8	1	2	3	9		19
Los Angeles	51	2,061	48	2,123	53	2,212	43	2,283	56	2,400
Madera	4	50	3	54	3	65	3	77	4	64
Marin		34	1	25		20		33	1	16
Mariposa		1		2				1	1	1
Mendocino	4	23	1	12	1	14	4	11	1	25
Merced	6	104	4	91	6	97	7	102	5	98
Modoc		2		3		1		4		2
Mono		6		3		7	1	11	1	7
Monterey	2	78	5	77	3	39	1	62	3	61
Napa	1	20	5	28		23		25	1	28
Nevada		35		32	1	46	1	26	1	20
Orange	5	412	7	451	5	442	8	430	15	420
Placer	2	52	1	66	2	70	2	72	1	34
Plumas		10		8	2	14		4	1	6
Riverside	14	416	6	434	26	411	20	439	11	477
Sacramento	11	276	5	237	7	249	4	278	5	249
San Benito	2	12	1	27	2	29	3	13		27
San Bernardino	29	610	29	632	34	648	31	604	27	707
San Diego	11	339	8	323	16	372	10	345	12	327
San Francisco	2	63	3	79	3	82	1	60	6	59
San Joaquin	7	296	6	212	9	243	10	285	16	275
San Luis Obispo	3	31		38	2	43	4	30		34
San Mateo	4	78	1	68	1	82	3	81		90
Santa Barbara	5	39	7	41	4	58	5	53	1	56
Santa Clara	3	96	3	164	3	127	4	123	4	128
Santa Cruz	1	22		28	3	35	1	33		29
Shasta	2	43	3	51	3	32	3	49	1	36
Sierra		1		7		3		3	1	1
Siskiyou		39	3	24	5	18	2	37		27
Solano	3	90	3	81	1	66	2	55	7	76
Sonoma	1	68	1	67		80	2	69	1	88
Stanislaus	3	129	5	157	2	139	5	135	6	119
Sutter		20	4	27		15		20	2	20
Tehama		20	1	28	3	21	1	25	2	22
Trinity		5	1	3		2		6		4
Tulare	8	105	10	122	9	131	8	103	10	122
Tuolumne		8	1	9	1	12		7		9
Ventura	2	100	2	108	4	90	5	127	5	105
Yolo		42	4	40	5	49	1	43	1	42
Yuba	1	10	3	8	2	20	1	12	1	14
TOTAL	271	6,982	236	7,157	278	7,249	261	7,340	278	7,511

\*May be under reported for non-CHP agencies due to a traffic collision report form revision of July 2003. (See Preface for details.)

TABLE 6E FATAL COLLISIONS WHERE TRUCK DRIVER WAS AT FAULT BY AGE BY PRIMARY COLLISION FACTOR - 2013

PRIMARY COLLISION FACTOR*	AGE											TOTAL	
	15-19	20-24	25-29	30-34	35-39	40-44	45-49	50-54	55-59	60-64	65 and over		not Stated
Driving Or Bicycling Under Influence Of Alcohol Or Drug							2						2
Impeding Traffic													
Unsafe Speed		1	1		2	4	1	3	5	1			18
Following Too Closely													
Wrong Side Of Road			1			1							2
Improper Passing													
Unsafe Lane Change								1					1
Improper Turning	1	1	3	4	1	4	2	3	2	3	3		27
Automobile Right-Of-Way		1	2		1		2		2				8
Pedestrian Right-Of-Way							1	1		1			3
Pedestrian Violation													
Traffic Signals And Signs			2			1	2		1		1		7
Unsafe Starting Or Backing					2								2
Other Hazardous Violation													
Other Than Driver													
Unknown													
Not Stated													
TOTAL	1	3	9	4	6	10	10	8	10	5	4		70

\*May be under reported for non-CHP agencies due to a traffic collision report form revision of July 2003. (See Preface for details.)

TABLE 6F INJURY COLLISIONS WHERE TRUCK DRIVER WAS AT FAULT BY AGE BY PRIMARY COLLISION FACTOR - 2013

PRIMARY COLLISION FACTOR*	AGE												TOTAL	
	0-14	15-19	20-24	25-29	30-34	35-39	40-44	45-49	50-54	55-59	60-64	65 and over		not Stated
Driving Or Bicycling Under Influence Of Alcohol Or Drug			1	4	3	2	4	2	6	7	3			32
Impeding Traffic											1			1
Unsafe Speed	2	7	64	79	116	128	123	136	136	89	58	29	13	980
Following Too Closely		1	8	7	8	9	7	4	10	5		4		63
Wrong Side Of Road			4	3	1	5	4	4	5	6	3	1	1	37
Improper Passing				1		1		1	4	2				9
Unsafe Lane Change		2	10	26	17	26	32	51	44	34	17	10	58	327
Improper Turning		2	26	38	39	51	58	46	70	54	30	15	17	446
Automobile Right-Of-Way		1	8	19	15	28	26	24	33	20	12	8	6	200
Pedestrian Right-Of-Way			2			6	5	6	4	1		2	5	31
Pedestrian Violation								1	1					2
Traffic Signals And Signs			8	8	4	11	11	10	11	6	6	4	3	82
Unsafe Starting Or Backing			5	5	10	8	13	10	15	11	1	2	1	81
Hazardous Parking				1	1		2	1		2			2	9
Lights														
Brakes			1											1
Other Equipment				2	2	2	1	1	1	1	3	1	1	15
Other Hazardous Violation			2	3	2		3	6			1		4	21
Other Improper Driving									2		1		2	5
Other Than Driver														
Unknown													1	1
Not Stated			2	1	2	3	3		4	2				17
TOTAL	2	14	144	196	219	282	290	307	347	236	133	76	114	2,360

\*May be under reported for non-CHP agencies due to a traffic collision report form revision of July 2003. (See Preface for details.)

TABLE 6G PERSONS KILLED IN TRUCK COLLISIONS WHERE TRUCK DRIVER WAS AT FAULT BY PRIMARY COLLISION FACTOR - 2013

PRIMARY COLLISION FACTOR*	AGE											TOTAL	
	0-14	15-19	20-24	25-29	30-34	35-39	40-44	45-49	50-54	55-59	60-64		65 and over
Driving Or Bicycling Under Intluence Of Alcohol Or Drug								1				1	2
Impeding Traffic													
Unsafe Speed		1	1			4	4	3	3	4		1	21
Following Too Closely													
Wrong Side Of Road											1	1	2
Improper Passing													
Unsafe Lane Change									1				1
Improper Turning	1			2	4	1	4	1	2	2	4	7	28
Automobile Right-Of-Way			1			2		2	1	1		1	8
Pedestrian Right-Of-Way			1									1	3
Pedestrian Violation													
Traffic Signals And Signs	1	1						1	1		2	1	7
Unsafe Starting Or Backing								1			1		2
Hazardous Parking													
Brakes													
Other Equipment													
Other Hazardous Violation													
Other Improper Driving													
Unknown													
Not Stated													
TOTAL	2	2	3	2	4	7	8	9	8	7	9	13	74

\*May be under reported for non-CHP agencies due to a traffic collision report form revision of July 2003. (See Preface for details.)

TABLE 6H PERSONS INJURED IN TRUCK COLLISIONS WHERE TRUCK DRIVER WAS AT FAULT BY PRIMARY COLLISION FACTOR - 2013

PRIMARY COLLISION FACTOR*	AGE												TOTAL	
	0-14	15-19	20-24	25-29	30-34	35-39	40-44	45-49	50-54	55-59	60-64	65 and over		NOT Stated
Driving Or Bicycling Under Intnuence														
Of Alcohol Or Drug	2	4	12	6	1	8	2	5	4	3	1	3	1	52
Impeding Traffic					1									1
Unsafe Speed	63	54	131	157	139	134	175	155	150	124	98	111	21	1,512
Following Too Closely	4	3	6	10	4	6	14	9	8	6	4	7		81
Wrong Side Of Road		1	5	5	6	4	7	2	2	6	2	6	2	48
Improper Passing				2	2	2		1		1		1		9
Unsafe Lane Change	19	23	63	44	43	35	29	38	39	43	29	32	1	438
Improper Turning	12	22	63	71	46	62	73	61	70	46	31	29	3	589
Automobile Right-Of-Way	21	17	39	29	26	15	26	21	20	28	18	26	1	287
Pedestrian Right-Of-Way	2	1	3	3	1	1	4	3	4	4	2	8		36
Pedestrian Violation	2		1							1				4
Traffic Signals And Signs	5	8	14	8	13	17	13	12	9	7	9	11	6	132
Unsafe Starting Or Backing	3		8	7	7	11	5	13	7	6	7	19	1	94
Hazardous Parking					1		3	1		1		3		9
Brakes							1							1
Other Equipment	2		3	2	2	1	1	3	1	1	3		1	20
Other Hazardous Violation	5		4	4	3	2	1	2	2	1	1	1		26
Other Improper Driving								2	1	1			1	5
Unknown	2					1								3
Not Stated		1	2	2	1	2	4		2	3	1	4		22
TOTAL	142	134	354	350	296	301	358	328	319	282	206	261	38	3,369

\*May be under reported for non-CHP agencies due to a traffic collision report form revision of July 2003. (See Preface for details.)



TABLE 61 FATAL AND INJURY TRUCK COLLISIONS WHERE TRUCK DRIVER WAS AT FAULT BY PRIMARY COLLISION FACTOR 2009 - 2013

PRIMARY COLLISION FACTOR*	2009		2010		2011		2012		2013	
	Fatal	Injury	Fatal	Injury	Fatal	Injury	Fatal	Injury	Fatal	Injury
Driving Or Bicycling Under Influence										
Of Alcohol Or Drug	2	25	1	34	1	45	2	44	2	32
Impeding Traffic		2		1		1		1		1
Unsafe Speed	20	849	20	913	20	918	19	888	18	980
Following Too Closely		55		52		49	1	58		63
Wrong Side Of Road	3	42	1	30	1	39	5	39	2	37
Improper Passing		11		2		12	1	6		9
Unsafe Lane Change	5	298	1	305	2	318	2	316	1	327
Improper Turning	10	372	6	385	23	411	26	407	27	446
Automobile Right-Of-Way	4	166	5	186	5	219	3	192	8	200
Pedestrian Right-Of-Way	1	23	3	27	4	23	5	25	3	31
Pedestrian Violation						2		1		2
Traffic Signals And Signs	3	90	3	80		81	8	86	7	82
Unsafe Starting Or Backing	2	68	1	67		78		78	2	81
Hazardous Parking	1	6		6		3		1		9
Lights										
Brakes		2		2		1		1		1
Other Equipment	1	7		8		4	1	15		15
Other Hazardous Violation		41		31	1	22		32		21
Other Improper Driving		7		7		3	1	7		5
Fell Asleep										
Unknown				1		1		1		1
Not Stated		8		19		27	1	13		17
TOTAL	52	2,072	41	2,156	57	2,257	75	2,211	70	2,360

\*May be under reported for non-CHP agencies due to a traffic collision report form revision of July 2003. (See Preface for details.)

TABLE 6J FATAL AND INJURY TRUCK COLLISIONS COMPARED TO ALL FATAL AND INJURY COLLISIONS 2009 - 2013

	2009	2010	2011	2012	2013
<b>COLLISIONS*</b>					
Total fatal collisions	2,805	2,520	2,628	2,758	2,853
Fatal truck collisions	236	214	245	235	256
Percent of total	8.4	8.5	9.3	8.5	9.0
Total injury collisions	163,524	161,094	159,115	159,696	156,909
Injury truck collisions	4,874	5,065	5,155	5,092	5,209
Percent of total	3.0	3.1	3.2	3.2	3.3

\*May be under reported for non-CHP agencies due to a traffic collision report form revision of July 2003. (See Preface for details.)

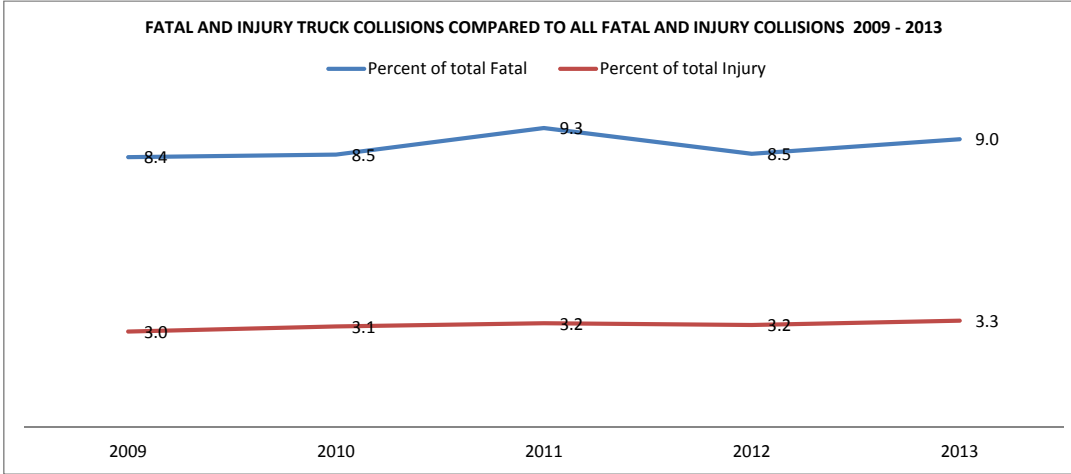


TABLE 6K TRUCK DRIVERS IN FATAL COLLISIONS BY AGE BY MOVEMENT PRECEDING COLLISION - 2013

MOVEMENT PRECEDING COLLISION*	AGE											TOTAL	
	15-19	20-24	25-29	30-34	35-39	40-44	45-49	50-54	55-59	60-64	65 and over		not Stated
Stopped				1	2	1	3	3	5				15
Proceeding straight	1	2	13	12	17	24	27	20	25	7	6	6	160
Ran off road		1		2		2		1		2	1		9
Making right turn				1	1		5		3	2			12
Making left turn			1		3	4	4	4	4	1	1		22
Making U turn										1			1
Backing					3	2					1		6
Slowing/stopping			2		1	1	1		3				8
Passing other vehicle			1										1
Changing lanes								1					1
Parking maneuver										1			1
Entering traffic					1	1	1						3
Other unsafe turning			1										1
Crossed into opposing lane	1	1	1	1			1						5
Other			1	1	1	1	1	2	2		2		11
TOTAL	2	4	20	18	29	36	43	31	42	14	11	6	256

\*May be under reported for non-CHP agencies due to a traffic collision report form revision of July 2003. (See Preface for details.)

TABLE 6L TRUCK DRIVERS IN INJURY COLLISIONS BY AGE BY MOVEMENT PRECEDING COLLISION - 2013

MOVEMENT PRECEDING COLLISION*	AGE													TOTAL
	0-14	15-19	20-24	25-29	30-34	35-39	40-44	45-49	50-54	55-59	60-64	65 and over	Not Stated	
Stopped		1	16	34	35	53	60	65	58	53	26	13	10	424
Proceeding straight	1	17	142	223	318	372	397	494	470	335	203	100	95	3,167
Ran off road		1	6	10	11	21	19	17	12	13	4	8		122
Making right turn			8	10	25	29	35	29	36	19	17	10	7	225
Making left turn		1	13	19	23	31	42	38	54	38	14	12	7	292
Making U turn			3	8	4	9	3	5	8	7	3	2	1	53
Backing			2	3	5	6	7	9	10	6	3	1	1	53
Slowing/stopping		1	14	19	23	23	35	29	44	30	15	10	8	251
Passing other vehicle				4	3	1	3	2	7	3		1		24
Changing lanes		1	14	30	22	33	38	54	47	41	17	10	52	359
Parking maneuver				1	1				1	2				5
Entering traffic				6	1	4	9	10	9	6	4	2	2	53
Other unsafe turning			3	6	2	7	6	5	4	7	4		5	49
Crossed into opposing lane			3		1	2	2		2		2			12
Parked <sup>1/</sup>							2			1				3
Merging					1	2	5	1	1	2			1	13
Traveling wrong way						1		1				1		3
Other	1	1	13	13	13	18	20	24	35	17	14	3	8	180
Not stated			1	1		1	4	3	2	1	1		3	17
TOTAL	2	23	238	387	488	613	687	786	800	581	327	173	200	5,305

\*May be under reported for non-CHP agencies due to a traffic collision report form revision of July 2003. (See Preface for details.)

<sup>1/</sup> Anomalies are due to re-engineering of SWITRS beginning with 2002 data.