

TABLE 7A FATAL AND INJURY COLLISIONS BY PRIMARY COLLISION FACTOR 2009 - 2013

PRIMARY COLLISION FACTOR ^{1/}	2009		2010		YEAR 2011		2012		2,013	
	Fatal	Injury	Fatal	Injury	Fatal	Injury	Fatal	Injury	Fatal	Injury
Driving Or Bicycling Under Influence Of Alcohol Or Drug	629	13,448	477	12,567	539	12,347	526	12,540	568	11,861
Pedestrian Or "Other" Under Influence Of Alcohol Or Drug				1		1				
Impeding Traffic	6	75	2	71	3	83	1	81	2	92
Unsafe Speed	423	47,869	396	49,338	410	48,272	427	48,065	436	48,050
Following Too Closely	4	4,021	3	3,810	4	3,667	5	3,820	3	3,587
Wrong Side Of Road	157	5,552	167	5,499	128	5,573	168	5,769	129	5,257
Improper Passing	23	1,011	18	945	24	983	15	989	22	975
Unsafe Lane Change	88	6,438	47	6,353	43	6,155	45	6,347	56	6,521
Improper Turning	540	22,654	509	21,877	526	21,617	578	21,703	544	21,863
Automobile Right-Of-Way	172	26,031	158	25,062	176	24,837	167	24,374	215	24,247
Pedestrian Right-Of-Way	78	4,359	83	4,364	89	4,402	81	4,569	97	4,199
Pedestrian Violation	315	4,078	363	3,889	360	3,885	390	4,026	432	3,796
Traffic Signals And Signs	140	12,994	112	12,799	129	12,610	137	12,807	138	12,494
Unsafe Starting Or Backing	10	3,207	11	3,111	11	3,109	6	2,961	12	2,802
Hazardous Parking	2	103	3	100	5	99	1	87	2	96
Lights	2	49		44	3	53	1	59	1	56
Brakes		35		33	1	37	1	34		28
Other Equipment	3	96	1	94	2	90	2	88	2	80
Other Hazardous Violation	11	1,698	11	1,673	18	1,598	12	1,633	25	1,416
Other Improper Driving	8	941	8	818	7	766	8	768	5	687
Fell Asleep ^{2/}		22		18		10		8		10
Other Than Driver	64	2,430	41	2,338	44	2,377	49	2,403	54	2,385
Unknown	82	3,164	60	3,212	56	3,182	75	3,219	49	3,225
Not Stated*	48	3,249	50	3,078	50	3,362	63	3,346	61	3,182
TOTAL	2,805	163,524	2,520	161,094	2,628	159,115	2,758	159,696	2,853	156,909

*Anomalies are due to re-engineering of SWITRS beginning with 2002 data.

^{1/} See Glossary for definition.

^{2/} Fell Asleep is no longer a Primary Collision Factor since July 2003 Traffic Collision form revision.

TABLE 7B PERSONS KILLED AND INJURED BY PRIMARY COLLISION FACTOR 2009 - 2013

PRIMARY COLLISION FACTOR ^{1/}	YEAR									
	2009		2010		2011		2012		2013	
	Killed	Injured	Killed	Injured	Killed	Injured	Killed	Injured	Killed	Injured
Driving Or Bicycling Under Influence Of Alcohol Or Drug	709	19,805	545	18,568	602	18,237	601	18,504	651	17,680
Pedestrian Or "Other" Under Influence Of Alcohol Or Drug				1		1				
Impeding Traffic	6	105	2	107	3	141	1	116	2	118
Unsafe Speed	462	69,817	435	71,854	443	70,653	459	70,291	480	70,447
Following Too Closely	4	5,757	3	5,387	4	5,257	5	5,498	3	5,214
Wrong Side Of Road	179	7,323	192	7,145	146	7,036	190	7,358	138	6,803
Improper Passing	29	1,337	22	1,173	26	1,242	16	1,232	25	1,212
Unsafe Lane Change	92	8,870	49	8,751	46	8,444	48	8,682	57	8,808
Improper Turning	612	30,575	545	29,659	577	28,805	638	28,894	603	28,999
Automobile Right-Of-Way	181	40,073	171	38,633	180	37,926	174	37,295	226	36,977
Pedestrian Right-Of-Way	80	4,709	86	4,675	90	4,769	82	4,924	98	4,553
Pedestrian Violation	315	4,283	365	4,100	361	4,091	392	4,249	435	4,034
Traffic Signals And Signs	167	21,217	125	20,740	141	20,245	162	20,816	154	20,260
Unsafe Starting Or Backing	10	3,944	11	3,927	11	3,957	6	3,722	12	3,529
Hazardous Parking	2	116	3	118	5	110	1	107	2	109
Lights	2	52		49	3	58	1	64	1	59
Brakes		42		38	1	41	1	38		29
Other Equipment	3	123	1	108	3	109	2	122	9	134
Other Hazardous Violation	12	2,138	11	2,040	19	1,938	12	1,995	27	1,734
Other Improper Driving	9	1,113	8	1,011	7	938	8	920	5	838
Fell Asleep ^{2/}		28		18		10		16		10
Other Than Driver	69	3,120	44	2,930	54	3,010	49	3,078	59	3,067
Unknown	83	4,026	62	4,234	58	4,136	83	4,276	51	4,296
Not Stated*	50	4,204	59	4,088	55	4,448	64	4,347	66	4,218
TOTAL	3,076	232,777	2,739	229,354	2,835	225,602	2,995	226,544	3,104	223,128

*Anomalies are due to re-engineering of SWITRS beginning with 2002 data.

^{1/} See Glossary for definition.

^{2/} Fell Asleep is no longer a Primary Collision Factor since July 2003 Traffic Collision form revision.

TABLE 7C ESTIMATED COST PER PERSON AND PER COLLISION BY VICTIM SEVERITY 2012 - 2013

Victim Severity	2012 ^{1/}		2013 ^{2/}	
	Cost Per	Total Cost	Cost Per	Total Cost
Killed	\$3,705,000	\$11,096,000,000	\$3,762,000	\$11,677,000,000
Injured				
Severe Injury	\$257,000	\$2,792,000,000	\$260,000	\$2,773,000,000
Other Visible	\$51,000	\$2,991,000,000	\$52,000	\$2,963,000,000
Complaint of Pain	\$27,000	\$4,240,000,000	\$27,000	\$4,198,000,000
Total		\$21,119,000,000		\$21,611,000,000

^{1/} Source of cost estimates: U. S. Department of Transportation, Federal Highway Administration, October 31, 1994, "Technical Advisory on Motor Vehicle Accident Cost." Costs have been updated to 2012 dollars using the Gross Domestic Product (GDP).

^{2/} Source of cost estimate: 1994 Study as indicated in footnote number ("). Costs have been updated to 2013 dollars using the Gross Domestic Product (GDP) figure provided by the U. S. Department of Commerce-Bureau of Economic Analysis. Due to change in future publication.

TABLE 7D HIT AND RUN COLLISIONS AND VICTIMS BY TYPE OF COLLISION - 2013

	Head-On	Sideswipe	Rear End	Broadside	Hit Object	Overtuned	Auto/ Pedestrian	Other	TOTAL
COLLISIONS									
Fatal Collisions	9	13	15	20	20	9	164	32	282
Injury Collisions	660	2,038	4,871	2,681	1,086	235	1,831	717	14,119
VICTIMS									
Killed Victims	13	13	17	21	21	9	168	35	297
Injured Victims	964	2,577	6,820	3,547	1,367	298	1,952	826	18,351

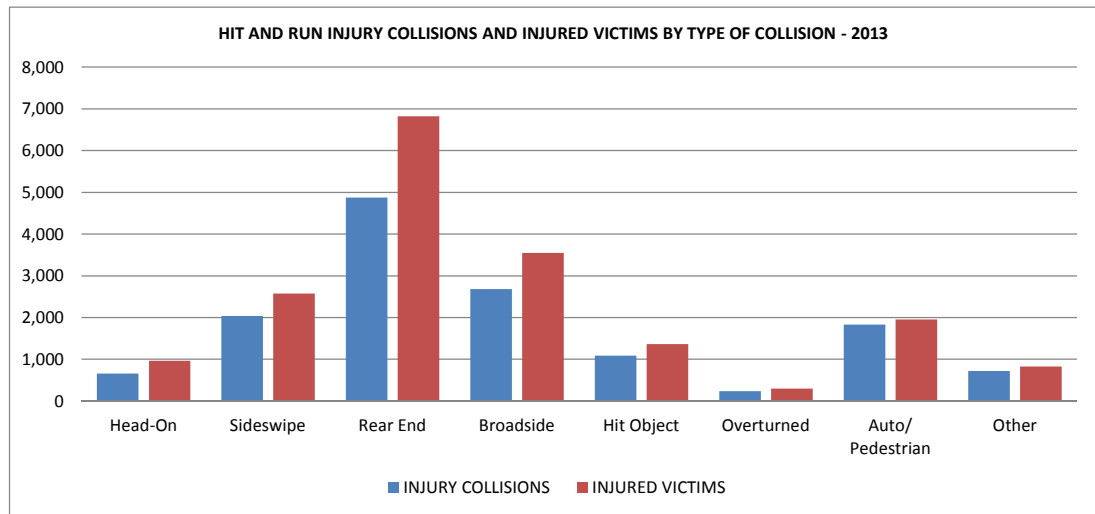
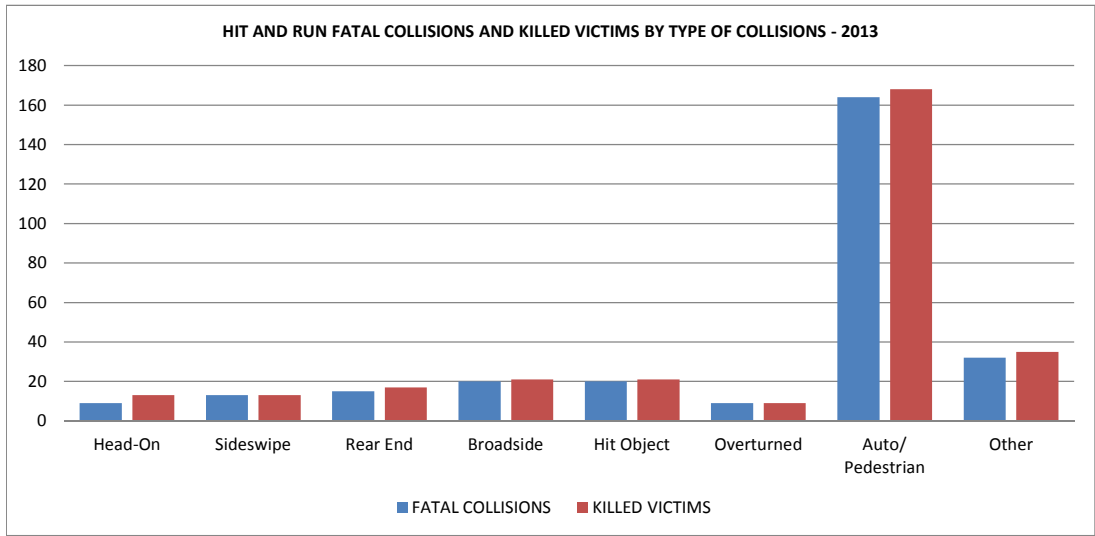


TABLE 7E PASSENGER VICTIMS KILLED AND INJURED AGED 5 AND UNDER BY COUNTY 2011 - 2013

COUNTY ^{1/}	2011		2012 ^{2/}		2013 ^{2/}		2013 vs 2012 Percentage of Change	
	Killed	Injured	Killed	Injured	Killed	Injured	Killed	Injured
Alameda	1	94		122	1	104		-14.8
Alpine		1				2		
Amador		3		4				-100.0
Butte		22		25		17		-32.0
Calaveras		3		4		5		25.0
Colusa		5		2		3		50.0
Contra Costa		53		60	1	70	∞	16.7
Del Norte		4		3		7		133.3
El Dorado		10	1	9		10	-100.0	11.1
Fresno	2	117	2	85	2	64		-24.7
Glenn		2		5		5		
Humboldt		17		10		11		10.0
Imperial		20		14		14		
Inyo		1		1		1		
Kern	1	117	2	116	1	123	-50.0	6.0
Kings		22		19		19		
Lake		8		9		5		-44.4
Lassen		3		6		6		
Los Angeles	1	952	6	901	2	970	-66.7	7.7
Madera		12	1	21	1	13		-38.1
Marin		14		14		10		-28.6
Mariposa				1		1		
Mendocino		7	1	11		9	-100.0	-18.2
Merced		48		45	1	42	∞	-6.7
Modoc		3		3				-100.0
Mono		5		3				-100.0
Monterey		34		39		27		-30.8
Napa		9		10		7		-30.0
Nevada		8		7	1	5	∞	-28.6
Orange	1	223		198		203		2.5
Placer		26		13	1	14	∞	7.7
Plumas	1	2		1		4		300.0
Riverside	3	196	3	208	1	194	-66.7	-6.7
Sacramento		131	2	127		126	-100.0	-0.8
San Benito		10		4		2		-50.0
San Bernardino		278	6	265	2	229	-66.7	-13.6
San Diego		228	2	216	1	188	-50.0	-13.0
San Francisco	1	42		28		25		-10.7
San Joaquin		74	2	81	1	52	-50.0	-35.8
San Luis Obispo		27		20		17		-15.0
San Mateo		23		25		21		-16.0
Santa Barbara		26		40		29		-27.5
Santa Clara	1	106		83		90		8.4
Santa Cruz		17		21		16		-23.8
Shasta		17		13		16		23.1
Sierra		2		2		1		-50.0
Siskiyou	1	8		1		5		400.0
Solano		25		29		24		-17.2
Sonoma		38		33		34		3.0
Stanislaus	1	73	1	66		59	-100.0	-10.6
Sutter		10		13		4		-69.2
Tehama		6	1	10	1	6		-40.0
Trinity	1			3		3		
Tulare	1	59	1	57	2	45	100.0	-21.1
Tuolumne		1		1		8		700.0
Ventura		65		80		61		-23.8
Yolo	1	17		14		8		-42.9
Yuba		5		2	1	4	∞	100.0
TOTAL	17	3,329	31	3,203	20	3,038	-35.5	-5.2

^{1/} Passenger victims excluding motorcyclist, mopeds, and bicyclist.

^{2/} Excludes fetus - see Glossary for definition.

∞ Percent of change in infinite when base year is zero.

TABLE 7F FATAL AND INJURY PEDESTRIAN COLLISIONS BY MONTH 2009 - 2013

MONTH	YEAR									
	2009		2010		2011		2012		2013	
	Fatal	Injury	Fatal	Injury	Fatal	Injury	Fatal	Injury	Fatal	Injury
January	60	1,140	49	1,108	49	1,135	57	1,207	68	1,125
February	58	1,037	55	955	57	1,085	64	1,019	62	939
March	50	1,054	45	1,040	53	1,060	54	1,074	64	1,009
April	39	959	45	861	43	882	39	873	61	974
May	38	939	32	862	54	830	51	927	50	877
June	30	789	35	860	49	705	45	860	32	813
July	29	891	42	814	46	846	41	863	60	811
August	60	919	44	927	44	887	54	987	56	901
September	58	1,116	60	1,124	62	1,119	68	1,126	62	938
October	60	1,221	70	1,073	67	1,163	64	1,265	87	1,119
November	61	1,164	66	1,138	73	1,128	77	1,211	70	1,038
December	55	1,189	79	1,261	64	1,175	85	1,165	77	1,079
TOTAL	598	12,418	622	12,023	661	12,015	699	12,577	749	11,623

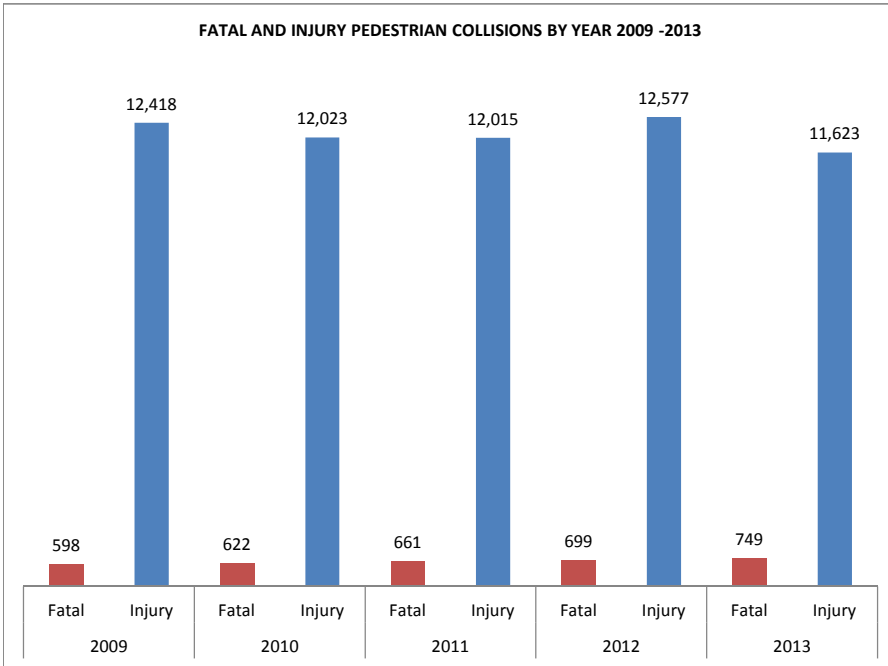


TABLE 7G PEDESTRIAN VICTIMS KILLED AND INJURED BY AGE 2009 - 2013

AGE	YEAR									
	2009		2010		2011		2012		2013	
	Killed	Injured	Killed	Injured	Killed	Injured	Killed	Injured	Killed	Injured
0-4	17	505	12	404	12	405	10	373	13	357
5-14	17	2,144	18	1,860	19	1,748	22	1,702	17	1,607
15-24	71	2,908	72	2,881	86	3,000	82	3,025	90	2,867
25-34	69	1,668	67	1,643	82	1,683	92	1,854	100	1,703
35-44	63	1,461	69	1,521	72	1,425	63	1,515	78	1,309
45-54	113	1,755	110	1,712	118	1,688	139	1,787	132	1,656
55-64	81	1,205	111	1,345	104	1,360	115	1,527	123	1,391
65-74	65	763	55	692	74	767	68	776	83	818
75-84	59	464	66	396	54	415	75	518	67	428
85 and over	26	129	35	141	28	123	29	136	35	130
Fetus ^{1/}	1								2	
Not stated	14	81	8	73	7	77	7	67	12	65
TOTAL	596	13,083	623	12,668	656	12,691	702	13,280	752	12,331

^{1/} See Glossary for definition.

TABLE 7H FATAL AND INJURY MOTORCYCLE COLLISIONS BY MONTH 2009 - 2013

MONTH*	YEAR									
	2009		2010		2011		2012		2013	
	Fatal	Injury	Fatal	Injury	Fatal	Injury	Fatal	Injury	Fatal	Injury
January	30	676	26	473	31	621	25	700	13	663
February	31	484	12	514	26	536	30	712	26	742
March	27	820	27	838	31	644	32	828	42	934
April	37	866	24	732	30	862	37	919	43	989
May	45	1,017	39	938	38	970	43	1,063	39	1,059
June	31	880	38	988	37	995	47	1,090	36	1,135
July	30	1,078	35	1,014	43	1,189	51	1,109	50	1,126
August	47	1,067	35	1,061	36	1,178	39	1,167	57	1,170
September	26	1,059	31	1,051	46	1,140	51	1,139	42	1,164
October	33	949	29	831	47	1,065	48	1,108	51	1,066
November	32	766	33	699	23	708	35	763	41	886
December	20	472	18	486	29	665	21	560	27	710
TOTAL	389	10,134	347	9,625	417	10,573	459	11,158	467	11,644

*May be under reported for the non-CHP agencies due to a traffic collision report form revision July 2003. (See Preface for details.)

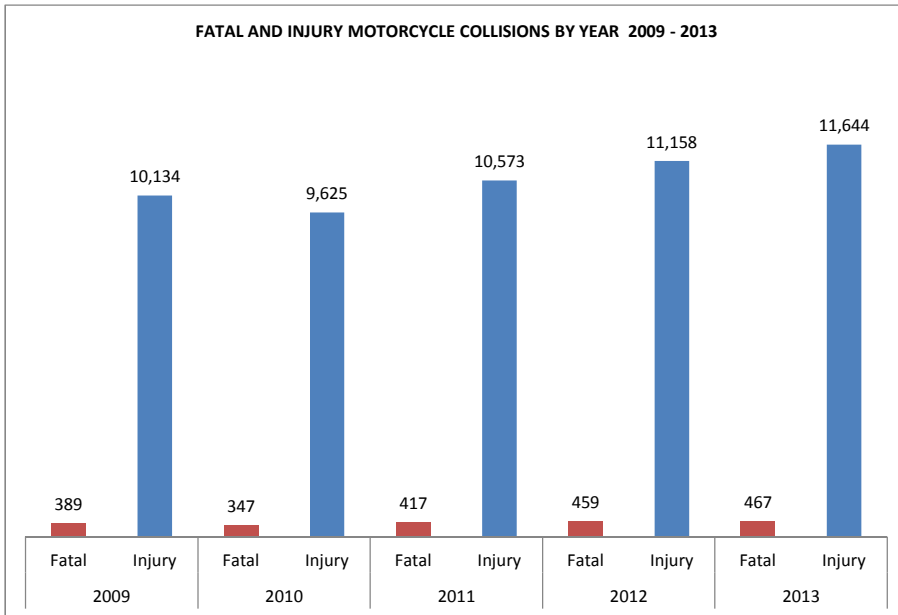


TABLE 71 MOTORCYCLISTS KILLED AND INJURED BY AGE 2009 - 2013

AGE*	2009		2010		YEAR 2011		2012		2013	
	Killed	Injured	Killed	Injured	Killed	Injured	Killed	Injured	Killed	Injured
0-4		15		15		9		19	1	11
5-14	1	121	1	103	1	106	1	89	3	102
15-24	74	2,311	58	1,966	71	2,252	68	2,592	83	2,765
25-34	88	2,469	67	2,497	96	2,851	116	3,151	121	3,370
35-44	65	2,005	80	1,862	77	1,912	72	1,890	87	1,918
45-54	84	2,027	80	2,025	84	1,984	92	1,958	64	1,948
55-64	52	1,199	48	1,135	60	1,309	73	1,273	80	1,314
65-74	13	236	11	278	24	356	23	390	22	402
75-84	4	32	2	47	4	60	5	51	1	55
85 and over		8	1	3		11		9	1	14
Not stated	2	56		38		56	1	50		47
TOTAL	383	10,479	348	9,969	417	10,906	451	11,472	463	11,946

*May be under reported for the non-CHP agencies due to a traffic collision report form revision July 2003. (See Preface for details.)

TABLE 7J FATAL AND INJURY MOTORCYCLE COLLISIONS BY COUNTY 2009 - 2013

COUNTY*	YEAR									
	2009		2010		2011		2012		2013	
	Fatal	Injury	Fatal	Injury	Fatal	Injury	Fatal	Injury	Fatal	Injury
Alameda	8	368	7	396	9	451	14	472	17	568
Alpine		12		16	2	11	1	8		8
Amador	2	44		33	8	35	2	42	1	25
Butte		63	5	55	5	55	3	56	1	58
Calaveras	1	34	2	58	2	34	2	31	4	25
Colusa	1	8		7	1	7		8		5
Contra Costa	10	203	8	165	4	199	11	206	7	257
Del Norte	1	11		12		15	3	16	2	19
El Dorado	2	127	4	99	4	71	3	74	2	89
Fresno	9	166	11	135	15	175	16	128	12	115
Glenn		11	3	5		7		9		3
Humboldt	1	56		53	4	44	6	41	3	65
Imperial	2	15	4	18	2	20	2	27	1	25
Inyo	2	27	2	30	1	25	1	27		18
Kern	8	195	4	189	12	201	12	191	13	204
Kings	4	22	3	25	2	22	4	28		24
Lake	2	27	3	26	3	30	2	33	4	23
Lassen		9	2	11	1	19	1	11	1	10
Los Angeles	83	2,719	74	2,637	88	3,024	116	3,233	105	3,509
Madera	4	48	5	32	4	37	2	26	1	52
Marin	4	89		92	1	122		102	2	87
Mariposa	1	23	1	23	1	17		23	1	21
Mendocino	4	39		43		46	1	45	3	44
Merced	3	51	3	58	2	53	8	42	7	56
Modoc		3		2	1	4		4		3
Mono		21	2	11		8	2	9		14
Monterey	4	94	5	71	5	77	4	79	6	95
Napa	1	77	1	72		66	3	57	2	67
Nevada	3	48		39	1	30	2	32	1	30
Orange	17	735	19	750	18	796	23	934	30	989
Placer	3	82	4	80	6	84	7	95	2	70
Plumas	1	21	1	12		21	2	18	1	18
Riverside	31	500	36	481	18	533	23	654	37	627
Sacramento	14	453	11	363	12	421	13	386	22	385
San Benito	2	17	1	20	1	27	2	17	1	16
San Bernardino	32	450	26	436	37	491	30	470	32	525
San Diego	39	989	24	997	50	1,103	52	1,265	47	1,285
San Francisco	8	358	5	376	7	353	9	398	4	266
San Joaquin	6	178	9	142	9	170	4	158	8	117
San Luis Obispo	6	101	3	72	1	87	6	92	9	99
San Mateo	7	155	2	167	11	201	7	194	8	198
Santa Barbara	3	92	1	72	6	86		79	8	91
Santa Clara	12	279	12	262	10	311	9	342	7	366
Santa Cruz	1	124	2	104	1	118		113	1	109
Shasta	3	75	2	76	2	75	5	77	7	74
Sierra	1	10		11	1	11	3	9		11
Siskiyou		23	1	19	2	17	2	19		15
Solano	3	91	5	67	7	75	4	86	6	111
Sonoma	3	202	6	134	4	172	5	135	4	170
Stanislaus	9	118	7	136	7	112	7	115	9	127
Sutter	3	27	1	17	2	12		27	1	20
Tehama	1	26	1	20	1	27	1	26	2	21
Trinity		25	1	20	1	21		13	1	12
Tulare	9	78	6	75	6	71	7	72	8	100
Tuolumne	2	52		39	3	45	1	45	2	32
Ventura	13	192	7	197	11	169	12	203	13	199
Yolo		45	2	37	1	33	1	35	1	44
Yuba		26	3	30	4	26	3	21		28
TOTAL	389	10,134	347	9,625	417	10,573	459	11,158	467	11,644

*May be under reported for the non-CHP agencies due to a traffic collision report form revision July 2003. (See Preface for details.)

TABLE 7K FATAL COLLISIONS WHERE MOTORCYCLE DRIVER WAS AT FAULT BY AGE BY PRIMARY COLLISION FACTOR - 2013

PRIMARY COLLISION FACTOR*	AGE											over	Not Stated	TOTAL
	0-14	15-19	20-24	25-29	30-34	35-39	40-44	45-49	50-54	55-59	60-64			
Driving Or Bicycling Under Influence Of Alcohol Or Drug		2	10	9	15	5	6	4	4	7	3			65
Unsafe Speed		6	22	25	14	7	9	7	13	13	4	7	1	128
Following Too Closely			2											2
Wrong Side Of Road		1	8		5	2		2	3	1	4	1		27
Improper Passing			1	1	2					1	1			6
Unsafe Lane Change					1	1	1		1	1		1		6
Improper Turning			9	5	7	6	4	5	2	8	7	6		59
Automobile Right-Of-Way	1	1		2	1	3		2			1	2		13
Pedestrian Violation														
Traffic Signals And Signs		1	1	3		1		1	1		1			9
Unsafe Starting Or Backing												1		1
Other Hazardous Violation							1							1
Other Improper Driving Other Than Driver														
Unknown							1							1
NOT STATED						1								1
TOTAL	1	11	53	45	45	26	22	21	25	32	19	18	1	319

*May be under reported for the non-CHP agencies due to a traffic collision report form revision July 2003. (See Preface for details.)

TABLE 7L INJURY COLLISIONS WHERE MOTORCYCLE DRIVER WAS AT FAULT BY AGE BY PRIMARY COLLISION FACTOR - 2013

PRIMARY COLLISION FACTOR*	AGE												TOTAL	
	0-14	15-19	20-24	25-29	30-34	35-39	40-44	45-49	50-54	55-59	60-64	65 and over		Not Stated
driving Or bicycling under														
Influence Of Alcohol Or Drug		5	64	82	65	47	50	43	56	33	15	4	1	465
Impeding Traffic			1					1		1				3
Unsafe Speed	12	162	680	562	376	241	214	232	236	200	141	102	21	3,179
Following Too Closely	1	3	15	21	15	10	10	11	8	11	3		3	111
Wrong Side Of Road	5	14	46	29	20	15	17	15	19	15	11	11	1	218
Improper Passing	1	9	41	39	36	27	15	12	33	12	7	8	4	244
Unsafe Lane Change		9	42	41	28	13	18	9	21	12	12	2	3	210
Improper Turning	10	81	239	195	125	127	106	108	132	116	80	104	9	1,432
Automobile Right-Of-Way	5	18	38	34	22	15	11	16	23	12	14	11	2	221
Pedestrian Right-Of-Way			2	3		2	2		1	4	1	4		19
Pedestrian Violation				1						1				2
Traffic Signals And Signs	1	23	44	22	16	11	10	3	12	8	3	6	6	165
Unsafe Starting Or Backing		4	6	3	6	1	1	2	6	3	2	6		40
Lights						1								1
Brakes		1												1
Other Equipment			2						1	3	2			8
Other Hazardous Violation	1	10	8	5	6	2	3	5	5	2	4	4	1	56
Other Improper Driving	1	5	3	10	5	5		5	6	3	3	8	1	55
Other Than Driver														
Unknown			6	1	4	2			1	1				15
NOT STATED	2	3	18	29	18	4	12	6	4	6	7	7	2	118
TOTAL	39	347	1,255	1,077	742	523	469	468	564	443	305	277	54	6,563

*May be under reported for the non-CHP agencies due to a traffic collision report form revision July 2003. (See Preface for details.)

TABLE 7M FATAL AND INJURY BICYCLE COLLISIONS BY MONTH 2009 - 2013

MONTH	YEAR									
	2009		2010		2011		2012		2013	
	Fatal	Injury	Fatal	Injury	Fatal	Injury	Fatal	Injury	Fatal	Injury
January	3	809	4	746	14	901	9	1,034	7	869
February	7	692	12	791	8	852	5	1,006	10	920
March	6	911	3	1,001	9	964	6	1,048	18	1,132
April	8	1,052	11	993	12	1,117	19	1,082	14	1,183
May	8	1,086	8	1,104	11	1,154	13	1,288	13	1,299
June	8	997	9	1,185	14	1,188	14	1,249	22	1,143
July	14	1,146	11	1,287	19	1,393	20	1,230	15	1,219
August	10	1,157	11	1,263	13	1,350	21	1,266	15	1,207
September	5	1,219	17	1,338	12	1,428	13	1,401	15	1,282
October	14	1,224	6	1,161	6	1,289	17	1,475	18	1,212
November	14	953	11	982	12	1,010	9	1,034	9	998
December	12	747	8	740	12	921	6	748	9	749
TOTAL	109	11,993	111	12,591	142	13,567	152	13,861	165	13,213

TABLE 7N BICYCLISTS KILLED AND INJURED BY AGE 2009 - 2013

AGE	YEAR									
	2009		2010		2011		2012		2013	
	Killed	Injured	Killed	Injured	Killed	Injured	Killed	Injured	Killed	Injured
0-4		56		38	2	42		56		26
5-14	10	1,859	4	1,705	10	1,826	5	1,778	4	1,403
15-24	11	3,357	16	3,826	15	4,158	14	4,328	31	4,023
25-34	10	2,020	14	2,143	18	2,297	19	2,382	13	2,404
35-44	22	1,574	16	1,599	21	1,607	23	1,593	20	1,590
45-54	19	1,720	26	1,781	28	1,993	29	1,921	38	1,966
55-64	21	935	19	1,022	25	1,131	29	1,205	37	1,230
65-74	7	329	11	348	11	340	17	455	10	438
75-84	4	102	3	109	7	129	9	109	7	114
85 and over	2	30		18	1	24	2	22	1	18
Not stated	1	61	1	64	2	59		72	3	71
TOTAL	107	12,043	110	12,653	140	13,606	147	13,921	164	13,283

TABLE 70 PERSONS KILLED AND INJURED DURING HOLIDAY PERIODS 2009 - 2013

HOLIDAYS	YEAR	DATES ^{1/}	DAYS	KILLED	INJURED
New Year	2008/2009	12/31-01/04	4 1/4	39	2,031
	2009/2010	12/31-01/03	3 1/4	36	1,421
	2010/2011	12/31-01/02	2 1/4	23	1,032
	2011/2012	12/30-01/02	3 1/4	31	1,561
	2012/2013	12/28-01/01	4 1/4	39	1,786
Memorial Day	2009	05/22-05/25	3 1/4	45	2,079
	2010	05/28-05/31	3 1/4	18	2,010
	2011	05/27-05/30	3 1/4	29	1,818
	2012	05/25-05/28	3 1/4	26	1,637
	2013	05/24-05/27	3 1/4	43	1,775
Fourth of July	2009	07/03-07/05	2 1/4	21	1,360
	2010	07/02-07/05	3 1/4	23	2,004
	2011	07/01-07/04	3 1/4	33	2,152
	2012	07/03-07/04	1 1/4	17	709
	2013	07/03-07/07	4 1/4	51	2,505
Labor Day	2009	09/04-09/07	3 1/4	14	1,915
	2010	09/03-09/06	3 1/4	27	1,886
	2011	09/02-09/05	3 1/4	34	1,894
	2012	08/31-09/03	3 1/4	41	1,850
	2013	08/30-09/02	3 1/4	39	1,831
Thanksgiving	2009	11/25-11/29	4 1/4	46	2,233
	2010	11/24-11/28	4 1/4	30	2,017
	2011	11/23-11/27	4 1/4	38	2,082
	2012	11/21-11/25	4 1/4	49	1,890
	2013	11/27-12/01	4 1/4	33	2,070
Christmas	2009	12/24-12/27	3 1/4	24	1,244
	2010	12/24-12/26	2 1/4	5	980
	2011	12/23-12/26	3 1/4	17	1,506
	2012	12/21-12/25	4 1/4	39	2,298
	2013	12/24-12/25	1 1/4	7	514

^{1/} The first day of each holiday time period starts at 1800 hours.

TABLE 7P PERSONS KILLED AND INJURED IN ALCOHOL INVOLVED COLLISIONS DURING HOLIDAY PERIODS 2009 - 2013

HOLIDAYS	YEAR	DATES ^{1/}	DAYS	KILLED	INJURED
New Year	2008/2009	12/31-01/04	4 1/4	23	440
	2009/2010	12/31-01/03	3 1/4	20	303
	2010/2011	12/31-01/02	2 1/4	21	205
	2011/2012	12/30-01/02	3 1/4	15	317
	2012/2013	12/28-01/01	4 1/4	18	306
Memorial Day	2009	05/22-05/25	3 1/4	20	341
	2010	05/28-05/31	3 1/4	7	410
	2011	05/27-05/30	3 1/4	14	352
	2012	05/25-05/28	3 1/4	16	306
	2013	05/24-05/27	3 1/4	15	326
Fourth of July	2009	07/03-07/05	2 1/4	13	267
	2010	07/02-07/05	3 1/4	14	342
	2011	07/01-07/04	3 1/4	15	400
	2012	07/03-07/04	1 1/4	12	140
	2013	07/03-07/07	4 1/4	28	399
Labor Day	2009	09/04-09/07	3 1/4	7	297
	2010	09/03-09/06	3 1/4	9	285
	2011	09/02-09/05	3 1/4	20	362
	2012	08/31-09/03	3 1/4	23	312
	2013	08/30-09/02	3 1/4	22	285
Thanksgiving	2009	11/25-11/29	4 1/4	24	368
	2010	11/24-11/28	4 1/4	13	289
	2011	11/23-11/27	4 1/4	17	300
	2012	11/21-11/25	4 1/4	21	279
	2013	11/27-12/01	4 1/4	13	326
Christmas	2009	12/24-12/27	3 1/4	13	283
	2010	12/24-12/26	2 1/4	3	184
	2011	12/23-12/26	3 1/4	8	247
	2012	12/21-12/25	4 1/4	21	375
	2013	12/24-12/25	1 1/4	3	110

^{1/} The first day of each holiday time period starts at 1800 hours.

TABLE 7Q COLLISIONS, VICTIMS, VEHICLE MILES OF TRAVEL, MOTOR VEHICLE REGISTRATION, POPULATION, AND MILEAGE DEATH RATE 1933 - 2013

YEAR	COLLISIONS		VICTIMS		VEHICLE MILES OF TRAVEL	MOTOR VEHICLE REGISTRATION	POPULATION	MILEAGE DEATH RATE ^{1/}
	Fatal	Injury	Killed	Injured				
1933 ^{3/}	2,230	29,677	2,403	43,856	15,895,463,368	1,966,931	5,963,000	15.1
1934 ^{3/}	2,576	30,163	2,805	45,153	15,987,226,805	2,001,410	6,060,000	17.5
1935 ^{3/}	2,607	31,122	2,806	47,078	17,870,987,044	2,159,601	6,175,000	15.7
1936 ^{3/}	2,838	33,478	3,132	49,326	19,470,191,553	2,336,845	6,341,000	16.1
1937 ^{3/}	2,850	35,118	3,139	52,351	20,644,669,804	2,494,713	6,528,000	15.2
1938 ^{3/}	2,550	34,093	2,775	51,150	20,597,907,614	2,521,476	6,656,000	13.5
1939 ^{3/}	2,613	35,629	2,870	53,878	22,077,096,194	2,618,394	6,785,000	13.0
1940 ^{3/}	2,760	38,530	3,034	57,922	23,051,915,667	2,788,035	6,950,000	13.1
1941	3,130	45,374	3,487	69,358	25,939,020,082	2,979,298	7,237,000	13.5
1942	2,317	33,612	2,551	49,139	22,538,208,982	2,854,721	7,735,000	11.3
1943	2,355	31,503	2,602	46,359	18,791,213,413	2,768,315	8,506,000	13.8
1944	2,283	31,514	2,534	47,620	19,244,240,843	2,801,552	8,945,000	13.2
1945	3,133	41,094	3,542	64,375	23,879,494,037	2,880,350	9,344,000	14.8
1946	3,292	48,831	3,664	74,693	32,136,521,935	3,134,235	9,559,000	11.4
1947	2,975	49,924	3,351	75,358	36,144,483,769	3,529,788	9,832,000	9.3
1948	2,646	53,012	2,932	79,002	37,404,270,430	3,814,637	10,064,000	7.8
1949	2,623	57,417	3,003	85,738	39,186,696,819	4,158,666	10,337,000	7.7
1950	2,706	62,800	3,054	95,096	41,568,161,762	4,613,241	10,609,000	7.3
1951	3,048	66,591	3,466	102,563	45,165,768,095	4,913,891	11,058,000	7.7
1952	3,061	71,311	3,562	110,874	48,347,307,772	5,135,893	11,743,000	7.4
1953	2,900	69,222	3,371	106,427	51,454,488,893	5,484,327	12,168,000	6.6
1954	2,706	71,364	3,104	108,265	51,732,460,320	5,673,692	12,595,000	6.0
1955	2,981	77,908	3,431	120,182	55,151,377,318	6,158,596	13,035,000	6.2
1956	3,290	84,562	3,804	130,982	59,426,661,577	6,506,592	13,600,000	6.4
1957	3,173	86,398	3,691	134,822	61,602,779,502	6,803,273	14,160,000	6.0
1958	3,041	87,265	3,510	135,565	63,909,847,624	7,269,348	14,752,000	5.5
1959	3,062	92,818	3,588	143,634	68,278,117,375	7,368,806	15,555,000	5.3
1960	3,213	100,026	3,723	154,760	70,257,580,644	7,809,724	15,860,000	5.3
1961	3,368	105,631	3,839	163,945	73,335,128,762	8,095,957	16,445,000	5.2
1962	3,519	118,951	4,121	184,676	76,934,039,378	8,790,834	17,094,000	5.4
1963	3,730	127,790	4,318	197,559	83,064,423,110	9,052,654	17,675,000	5.2
1964	4,098	139,862	4,743	215,395	87,232,255,075	9,651,324	18,234,000	5.4
1965	4,053	143,865	4,706	220,460	92,162,779,049	10,203,490	18,756,000	5.1
1966	4,213	150,571	4,830	230,000	95,987,000,856	10,496,928	19,195,000	5.0
1967	4,215	152,321	4,883	233,834	99,462,198,703	10,691,800	19,535,000	4.9
1968	4,224	156,547	4,853	239,944	106,177,292,458	11,368,250	19,782,000	4.6
1969	4,427	159,927	5,080	245,706	112,109,495,394	11,920,992	19,856,000	4.5
1970	4,277	158,391	4,901	241,589	117,212,090,943	12,504,121	19,953,134	4.2
1971	3,953	160,182	4,462	240,423	122,563,745,201	12,818,794	20,002,900	3.6
1972	4,426	172,197	4,996	252,429	126,716,750,299	13,303,210	20,524,000	3.9
1973	4,318	171,707	4,905	250,396	132,508,094,172	13,874,213	20,741,000	3.7
1974	3,550	160,370	4,019	231,253	127,157,391,600	14,181,998	20,933,000	3.2
1975	3,751	167,758	4,189	243,882	131,347,628,700	14,368,819	21,113,000	3.2
1976	3,980	176,549	4,489	257,419	142,244,262,500	14,748,473	21,520,000	3.2
1977	4,443	193,270	4,942	284,079	153,596,262,400	15,447,979	21,896,000	3.2
1978	4,712	211,156	5,296	312,620	165,130,609,000	16,058,370	22,297,000	3.2
1979	4,941	210,557	5,503	309,240	163,700,565,600	16,580,967	22,693,700	3.4
1980	4,926	198,172	5,489	291,939	160,474,100,000	17,334,976	23,616,000	3.4
1981	4,666	194,781	5,170	287,324	160,800,000,000	17,217,477	24,196,000	3.2
1982	4,113	184,972	4,609	274,073	170,000,000,000	17,482,588	24,724,000	2.7
1983	4,087	196,394	4,571	292,538	182,653,000,000	18,206,318	25,174,000	2.5
1984	4,497	208,419	4,999	309,352	195,990,000,000	18,504,004	25,622,000	2.6
1985	4,422	216,170	4,933	322,703	203,782,000,000	19,645,982	26,365,100	2.4
1986	4,647	233,004	5,222	347,351	213,117,000,000	20,458,130	26,980,800	2.5
1987	4,920	239,190	5,500	360,699	226,271,000,000	20,605,925	27,662,900	2.4
1988	4,859	235,491	5,381	356,945	239,043,000,000	21,656,938	28,314,500	2.3
1989	4,834	236,831	5,381	363,645	251,481,000,000	21,999,869	29,063,200	2.1
1990	4,660	236,542	5,173	365,758	258,967,000,000	22,198,529	29,976,000	2.0
1991	4,164	224,004	4,649	350,068	258,268,000,000	22,509,215	30,646,000	1.8
1992	3,707	215,072	4,185	338,154	260,402,000,000	22,299,602	31,300,000	1.6
1993	3,678	202,656	4,163	315,184	266,304,000,000	22,421,132	31,742,400	1.56
1994	3,772	203,223	4,212	316,441	272,109,000,000	22,218,083	32,140,000	1.55
1995	3,636	196,569	4,165	304,941	274,840,000,000	22,559,335	32,063,000	1.52
1996	3,555	193,805	3,972	300,106	278,785,000,000	22,931,314	32,383,000	1.42
1997	3,252	185,952	3,671	284,871	284,824,000,000	21,724,078	32,957,000	1.29
1998	3,075	189,007	3,459	290,698	290,406,000,000	23,200,240	33,494,000	1.19
1999	3,144	188,730	3,559	288,727	299,577,000,000	23,747,494	34,036,000	1.19
2000	3,331	198,348	3,730	303,023	306,464,000,000	24,714,595	34,480,000	1.22
2001	3,517	201,478	3,926	305,907	314,550,000,000	25,472,630	34,758,000	1.25
2002	3,650	205,223	4,089	310,689	320,874,000,000	26,488,553	35,301,000	1.27
2003	3,726	204,174	4,225	307,166	324,087,000,000	26,420,438	35,934,000	1.30
2004	3,701	203,386	4,094	302,357	328,641,000,000	28,258,341	36,590,800	1.25

TABLE 7Q COLLISIONS, VICTIMS, VEHICLE MILES OF TRAVEL, MOTOR VEHICLE REGISTRATION, POPULATION, AND MILEAGE DEATH RATE 1933 - 2013

YEAR	COLLISIONS		VICTIMS		VEHICLE MILES OF TRAVEL	MOTOR VEHICLE REGISTRATION	POPULATION	MILEAGE DEATH RATE ^{1/}
	Fatal	Injury	Killed	Injured				
2005	3,822	198,708	4,304	292,798	327,500,000,000	28,129,822	37,004,700	1.31
2006	3,793	189,957	4,197	277,574	329,700,000,000	28,705,184	37,444,400	1.27
2007	3,557	184,994	3,967	266,687	330,140,000,000	28,908,964	37,771,400	1.18
2008	3,113	170,496	3,401	241,873	325,750,000,000	28,663,729	38,148,500	1.04
2009	2,805	163,519	3,076	232,770	324,275,000,000	28,495,919	38,476,700	0.95
2010	2,520	161,094	2,739	229,354	327,770,000,000	28,560,744	37,318,500	0.84
2011	2,628	159,115	2,835	225,354	325,032,000,000	28,463,152	37,570,300	0.87
2012	2,758	159,696	2,995	226,544	326,547,000,000	28,836,311	37,872,400	0.92
2013	2,853	156,909	3,104	223,128	329,174,000,000 ^{2/}	26,679,221	38,164,000	0.94

^{1/} Number of persons killed per 100 million miles of travel.

^{2/} The 2013 vehicle miles of travel is an estimate. Source: California Department of Transportation.

^{3/} Accident and victim data for 1933 through 1940 include private property.