

TABLE 6A FATAL AND INJURY TRUCK COLLISIONS BY MONTH 2010 - 2014

| MONTH* | 2010 | | 2011 | | 2012 | | 2013 | | 2014 | |
|-----------|-------|--------|-------|--------|-------|--------|-------|--------|-------|--------|
| | Fatal | Injury | Fatal | Injury | Fatal | Injury | Fatal | Injury | Fatal | Injury |
| January | 15 | 353 | 18 | 360 | 15 | 411 | 13 | 426 | 26 | 398 |
| February | 19 | 354 | 19 | 348 | 15 | 332 | 18 | 340 | 15 | 393 |
| March | 19 | 390 | 24 | 426 | 22 | 407 | 17 | 417 | 19 | 431 |
| April | 10 | 423 | 20 | 385 | 13 | 396 | 24 | 424 | 20 | 415 |
| May | 17 | 390 | 17 | 424 | 21 | 437 | 26 | 451 | 25 | 452 |
| June | 22 | 405 | 17 | 453 | 20 | 422 | 17 | 459 | 23 | 415 |
| July | 16 | 396 | 23 | 423 | 15 | 424 | 23 | 436 | 33 | 456 |
| August | 19 | 504 | 24 | 478 | 23 | 515 | 25 | 487 | 22 | 499 |
| September | 24 | 490 | 17 | 477 | 28 | 415 | 20 | 469 | 20 | 492 |
| October | 20 | 493 | 29 | 484 | 21 | 506 | 30 | 523 | 27 | 564 |
| November | 17 | 434 | 16 | 495 | 25 | 456 | 19 | 419 | 27 | 477 |
| December | 16 | 433 | 21 | 402 | 17 | 371 | 24 | 358 | 22 | 484 |
| TOTAL | 214 | 5,065 | 245 | 5,155 | 235 | 5,092 | 256 | 5,209 | 279 | 5,476 |

*May be under reported for Non-CHP agencies due to a traffic collision report form revision of July 2003 (See Preface for details.)

TABLE 6B PERSONS KILLED AND INJURED IN TRUCK COLLISIONS BY MONTH 2010 - 2014

| MONTH* | 2010 | | 2011 | | 2012 | | 2013 | | 2014 | |
|--------------|------------|--------------|------------|--------------|------------|--------------|------------|--------------|------------|--------------|
| | Killed | Injured | Killed | Injured | Killed | Injured | Killed | Injured | Killed | Injured |
| January | 16 | 485 | 19 | 501 | 15 | 590 | 13 | 586 | 28 | 573 |
| February | 23 | 487 | 22 | 499 | 17 | 458 | 18 | 475 | 15 | 533 |
| March | 21 | 570 | 26 | 595 | 23 | 610 | 22 | 612 | 23 | 599 |
| April | 11 | 584 | 25 | 523 | 14 | 574 | 24 | 609 | 30 | 611 |
| May | 19 | 536 | 19 | 583 | 21 | 600 | 28 | 651 | 25 | 664 |
| June | 25 | 581 | 19 | 629 | 24 | 660 | 18 | 696 | 26 | 618 |
| July | 18 | 610 | 26 | 620 | 16 | 619 | 27 | 650 | 38 | 656 |
| August | 22 | 720 | 26 | 652 | 24 | 735 | 28 | 712 | 22 | 751 |
| September | 25 | 709 | 21 | 706 | 32 | 585 | 21 | 699 | 22 | 696 |
| October | 20 | 671 | 34 | 689 | 23 | 742 | 33 | 728 | 28 | 797 |
| November | 19 | 597 | 18 | 683 | 34 | 645 | 20 | 579 | 28 | 653 |
| December | 17 | 607 | 23 | 569 | 18 | 522 | 26 | 514 | 25 | 680 |
| TOTAL | 236 | 7,157 | 278 | 7,249 | 261 | 7,340 | 278 | 7,511 | 310 | 7,831 |

*May be under reported for Non-CHP agencies due to a traffic collision report form revision of July 2003 (See Preface for details.)

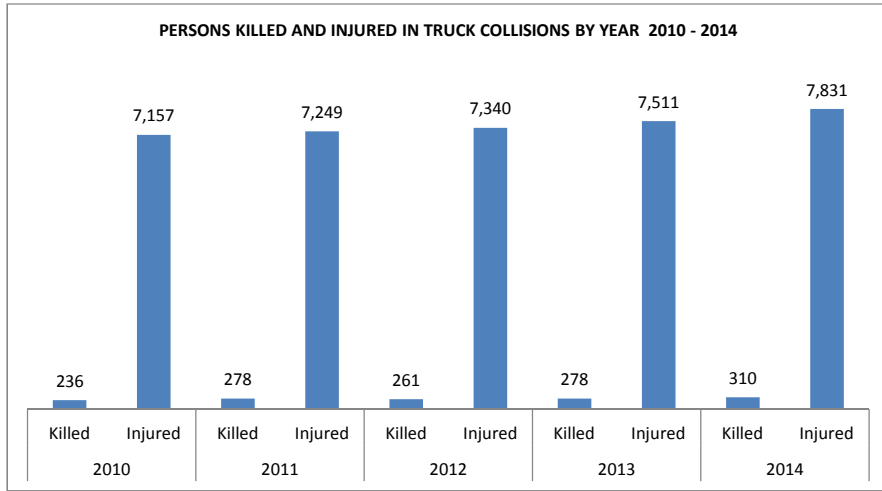


TABLE 6C FATAL AND INJURY TRUCK COLLISIONS BY COUNTY 2010 - 2014

| COUNTY* | 2010 | | 2011 | | 2012 | | 2013 | | 2014 | |
|-----------------|-------|--------|-------|--------|-------|--------|-------|--------|-------|--------|
| | Fatal | Injury | Fatal | Injury | Fatal | Injury | Fatal | Injury | Fatal | Injury |
| Alameda | 6 | 220 | 7 | 236 | 3 | 238 | 9 | 244 | 7 | 253 |
| Alpine | | | | 2 | | | | | | 1 |
| Amador | | 6 | 3 | 3 | | 5 | | 2 | | 7 |
| Butte | 1 | 27 | | 20 | 2 | 21 | 2 | 22 | | 30 |
| Calaveras | 1 | 5 | | 2 | | 6 | | 9 | 1 | 5 |
| Colusa | 1 | 9 | 1 | 11 | 1 | 11 | 1 | 13 | | 8 |
| Contra Costa | | 72 | | 63 | 3 | 72 | 4 | 72 | 4 | 77 |
| Del Norte | 1 | 3 | 1 | 1 | | 4 | 1 | 2 | 1 | 2 |
| El Dorado | | 8 | 3 | 15 | | 9 | | 11 | | 5 |
| Fresno | 10 | 135 | 8 | 150 | 11 | 123 | 10 | 127 | 12 | 131 |
| Glenn | 1 | 12 | 1 | 3 | 1 | 4 | 1 | 7 | 1 | 8 |
| Humboldt | 2 | 13 | 2 | 15 | | 22 | 2 | 16 | 3 | 6 |
| Imperial | 5 | 35 | 1 | 32 | 5 | 39 | 7 | 36 | 6 | 44 |
| Inyo | | 11 | | 2 | | 2 | | 2 | | 2 |
| Kern | 16 | 206 | 19 | 207 | 19 | 193 | 19 | 188 | 15 | 216 |
| Kings | 1 | 22 | 1 | 38 | 5 | 38 | 3 | 36 | 4 | 34 |
| Lake | 1 | 10 | 1 | 7 | 1 | 11 | 2 | 7 | | 9 |
| Lassen | | 6 | 1 | 2 | 3 | 5 | | 10 | | 9 |
| Los Angeles | 47 | 1,535 | 47 | 1,607 | 39 | 1,591 | 53 | 1,689 | 61 | 1,635 |
| Madera | 3 | 38 | 3 | 43 | 1 | 50 | 4 | 36 | 4 | 33 |
| Marin | 1 | 19 | | 19 | | 21 | 1 | 13 | | 27 |
| Mariposa | | 1 | | | | 1 | 1 | | 1 | 1 |
| Mendocino | 1 | 10 | 1 | 14 | 4 | 9 | 1 | 17 | 2 | 22 |
| Merced | 4 | 64 | 6 | 72 | 6 | 65 | 5 | 55 | 8 | 77 |
| Modoc | | 3 | | 1 | | 4 | | 2 | | |
| Mono | | 3 | | 6 | 1 | 8 | 1 | 7 | | 3 |
| Monterey | 4 | 55 | 3 | 30 | 1 | 40 | 3 | 47 | 3 | 42 |
| Napa | 2 | 19 | | 19 | | 19 | 1 | 22 | | 15 |
| Nevada | | 24 | 1 | 35 | 1 | 21 | 1 | 12 | 1 | 13 |
| Orange | 5 | 351 | 5 | 336 | 7 | 315 | 12 | 300 | 10 | 369 |
| Placer | 1 | 46 | 2 | 46 | 2 | 37 | 1 | 22 | | 38 |
| Plumas | | 7 | 1 | 7 | | 4 | 1 | 5 | | 2 |
| Riverside | 6 | 293 | 23 | 292 | 19 | 305 | 10 | 325 | 19 | 344 |
| Sacramento | 4 | 177 | 7 | 174 | 4 | 181 | 5 | 186 | 8 | 200 |
| San Benito | 1 | 15 | 1 | 16 | 2 | 10 | | 15 | 1 | 8 |
| San Bernardino | 24 | 425 | 29 | 438 | 29 | 412 | 26 | 464 | 32 | 525 |
| San Diego | 8 | 228 | 14 | 253 | 10 | 248 | 10 | 240 | 15 | 286 |
| San Francisco | 3 | 52 | 3 | 54 | 1 | 46 | 6 | 43 | 1 | 56 |
| San Joaquin | 6 | 152 | 8 | 171 | 9 | 184 | 14 | 185 | 8 | 161 |
| San Luis Obispo | | 25 | 2 | 27 | 4 | 21 | | 24 | 2 | 37 |
| San Mateo | 1 | 57 | 1 | 56 | 3 | 55 | | 64 | | 56 |
| Santa Barbara | 5 | 29 | 4 | 34 | 5 | 36 | 1 | 42 | 1 | 52 |
| Santa Clara | 3 | 111 | 3 | 95 | 4 | 92 | 4 | 96 | 9 | 110 |
| Santa Cruz | | 21 | 2 | 26 | 1 | 24 | | 24 | | 27 |
| Shasta | 3 | 39 | 3 | 27 | 2 | 41 | 1 | 24 | 4 | 24 |
| Sierra | | 7 | | 2 | | 2 | 1 | 1 | | 2 |
| Siskiyou | 3 | 13 | 2 | 10 | 2 | 21 | | 17 | 2 | 21 |
| Solano | 3 | 60 | 1 | 49 | 2 | 46 | 6 | 49 | 4 | 58 |
| Sonoma | 1 | 50 | | 65 | 2 | 46 | 1 | 63 | | 60 |
| Stanislaus | 5 | 100 | 2 | 89 | 5 | 95 | 4 | 83 | 8 | 84 |
| Sutter | 4 | 13 | | 13 | | 14 | 2 | 14 | 1 | 14 |
| Tehama | 1 | 17 | 3 | 13 | 1 | 17 | 2 | 15 | 2 | 6 |
| Trinity | 1 | 2 | | 2 | | 5 | | 2 | 1 | 4 |
| Tulare | 9 | 84 | 9 | 92 | 7 | 73 | 10 | 84 | 11 | 73 |
| Tuolumne | 1 | 8 | 1 | 7 | | 6 | | 6 | 1 | 7 |
| Ventura | 2 | 79 | 4 | 62 | 5 | 83 | 5 | 73 | 1 | 84 |
| Yolo | 3 | 27 | 3 | 29 | 1 | 33 | 1 | 27 | 4 | 41 |
| Yuba | 3 | 6 | 2 | 15 | 1 | 8 | 1 | 12 | | 12 |
| TOTAL | 214 | 5,065 | 245 | 5,155 | 235 | 5,092 | 256 | 5,209 | 279 | 5,476 |

*May be under reported for Non-CHP agencies due to a traffic collision report form revision of July 2003 (See Preface for details.)

TABLE 6D PERSONS KILLED AND INJURED IN TRUCK COLLISIONS BY COUNTY 2010 - 2014

| COUNTY* | 2010 | | 2011 | | 2012 | | 2013 | | 2014 | |
|-----------------|--------|---------|--------|---------|--------|---------|--------|---------|--------|---------|
| | Killed | Injured | Killed | Injured | Killed | Injured | Killed | Injured | Killed | Injured |
| Alameda | 6 | 293 | 7 | 316 | 3 | 307 | 10 | 335 | 7 | 332 |
| Alpine | | | | 2 | | | | | | 1 |
| Amador | | 9 | 3 | 4 | | 9 | | 2 | | 12 |
| Butte | 1 | 36 | | 22 | 2 | 38 | 3 | 33 | | 53 |
| Calaveras | 1 | 6 | | 2 | | 7 | | 11 | 1 | 10 |
| Colusa | 1 | 12 | 1 | 15 | 1 | 18 | 2 | 23 | | 15 |
| Contra Costa | | 88 | | 79 | 4 | 106 | 5 | 96 | 4 | 99 |
| Del Norte | 1 | 4 | 1 | 1 | | 4 | 1 | 2 | 1 | 4 |
| El Dorado | | 11 | 3 | 20 | | 11 | | 13 | | 9 |
| Fresno | 12 | 238 | 11 | 232 | 15 | 197 | 10 | 209 | 13 | 234 |
| Glenn | 1 | 20 | 1 | 4 | 1 | 8 | 1 | 9 | 10 | 49 |
| Humboldt | 2 | 18 | 2 | 23 | | 31 | 2 | 21 | 3 | 8 |
| Imperial | 6 | 44 | 1 | 46 | 6 | 53 | 7 | 54 | 9 | 63 |
| Inyo | | 13 | | 2 | | 3 | | 2 | | 10 |
| Kern | 18 | 322 | 24 | 306 | 24 | 288 | 19 | 283 | 17 | 327 |
| Kings | 1 | 32 | 1 | 58 | 5 | 62 | 4 | 58 | 5 | 53 |
| Lake | 1 | 13 | 1 | 8 | 1 | 13 | 4 | 16 | | 11 |
| Lassen | | 8 | 1 | 2 | 3 | 9 | | 19 | | 11 |
| Los Angeles | 48 | 2,123 | 53 | 2,212 | 43 | 2,283 | 56 | 2,400 | 64 | 2,280 |
| Madera | 3 | 54 | 3 | 65 | 3 | 77 | 4 | 64 | 5 | 44 |
| Marin | 1 | 25 | | 20 | | 33 | 1 | 16 | | 34 |
| Mariposa | | 2 | | | | 1 | 1 | 1 | 1 | 3 |
| Mendocino | 1 | 12 | 1 | 14 | 4 | 11 | 1 | 25 | 2 | 27 |
| Merced | 4 | 91 | 6 | 97 | 7 | 102 | 5 | 98 | 8 | 109 |
| Modoc | | 3 | | 1 | | 4 | | 2 | | |
| Mono | | 3 | | 7 | 1 | 11 | 1 | 7 | | 3 |
| Monterey | 5 | 77 | 3 | 39 | 1 | 62 | 3 | 61 | 4 | 71 |
| Napa | 5 | 28 | | 23 | | 25 | 1 | 28 | | 17 |
| Nevada | | 32 | 1 | 46 | 1 | 26 | 1 | 20 | 1 | 18 |
| Orange | 7 | 451 | 5 | 442 | 8 | 430 | 15 | 420 | 10 | 506 |
| Placer | 1 | 66 | 2 | 70 | 2 | 72 | 1 | 34 | | 50 |
| Plumas | | 8 | 2 | 14 | | 4 | 1 | 6 | | 2 |
| Riverside | 6 | 434 | 26 | 411 | 20 | 439 | 11 | 477 | 20 | 488 |
| Sacramento | 5 | 237 | 7 | 249 | 4 | 278 | 5 | 249 | 8 | 265 |
| San Benito | 1 | 27 | 2 | 29 | 3 | 13 | | 27 | 1 | 14 |
| San Bernardino | 29 | 632 | 34 | 648 | 31 | 604 | 27 | 707 | 36 | 763 |
| San Diego | 8 | 323 | 16 | 372 | 10 | 345 | 12 | 327 | 15 | 397 |
| San Francisco | 3 | 79 | 3 | 82 | 1 | 60 | 6 | 59 | 1 | 108 |
| San Joaquin | 6 | 212 | 9 | 243 | 10 | 285 | 16 | 275 | 8 | 221 |
| San Luis Obispo | | 38 | 2 | 43 | 4 | 30 | | 34 | 5 | 54 |
| San Mateo | 1 | 68 | 1 | 82 | 3 | 81 | | 90 | | 75 |
| Santa Barbara | 7 | 41 | 4 | 58 | 5 | 53 | 1 | 56 | 1 | 79 |
| Santa Clara | 3 | 164 | 3 | 127 | 4 | 123 | 4 | 128 | 9 | 147 |
| Santa Cruz | | 28 | 3 | 35 | 1 | 33 | | 29 | | 30 |
| Shasta | 3 | 51 | 3 | 32 | 3 | 49 | 1 | 36 | 4 | 33 |
| Sierra | | 7 | | 3 | | 3 | 1 | 1 | | 3 |
| Siskiyou | 3 | 24 | 5 | 18 | 2 | 37 | | 27 | 2 | 28 |
| Solano | 3 | 81 | 1 | 66 | 2 | 55 | 7 | 76 | 4 | 87 |
| Sonoma | 1 | 67 | | 80 | 2 | 69 | 1 | 88 | | 73 |
| Stanislaus | 5 | 157 | 2 | 139 | 5 | 135 | 6 | 119 | 8 | 120 |
| Sutter | 4 | 27 | | 15 | | 20 | 2 | 20 | 1 | 24 |
| Tehama | 1 | 28 | 3 | 21 | 1 | 25 | 2 | 22 | 2 | 7 |
| Trinity | 1 | 3 | | 2 | | 6 | | 4 | 1 | 6 |
| Tulare | 10 | 122 | 9 | 131 | 8 | 103 | 10 | 122 | 13 | 132 |
| Tuolumne | 1 | 9 | 1 | 12 | | 7 | | 9 | 1 | 11 |
| Ventura | 2 | 108 | 4 | 90 | 5 | 127 | 5 | 105 | 1 | 128 |
| Yolo | 4 | 40 | 5 | 49 | 1 | 43 | 1 | 42 | 4 | 56 |
| Yuba | 3 | 8 | 2 | 20 | 1 | 12 | 1 | 14 | | 17 |
| TOTAL | 236 | 7,157 | 278 | 7,249 | 261 | 7,340 | 278 | 7,511 | 310 | 7,831 |

*May be under reported for Non-CHP agencies due to a traffic collision report form revision of July 2003 (See Preface for details.)

TABLE 6E FATAL COLLISIONS WHERE TRUCK DRIVER WAS AT FAULT BY AGE BY PRIMARY COLLISION FACTOR - 2014

| PRIMARY COLLISION FACTOR* | AGE | | | | | | | | | | TOTAL | |
|---|-------|-------|-------|-------|-------|-------|-------|-------|-------|-------------|-------|------------|
| | 20-24 | 25-29 | 30-34 | 35-39 | 40-44 | 45-49 | 50-54 | 55-59 | 60-64 | 65 and over | | Not Stated |
| Driving Or Bicycling Under Influence Of Alcohol Or Drug | | | 1 | | 1 | 1 | 1 | | | | | 4 |
| Unsafe Speed | 1 | 3 | 2 | 1 | 4 | 2 | 2 | 5 | 2 | | | 22 |
| Wrong Side Of Road | | | | 1 | | | | | | | | 1 |
| Improper Passing | | | | | | | | | 1 | | | 1 |
| Unsafe Lane Change | 1 | | | | | | | | | | | 1 |
| Improper Turning | 1 | 1 | | 2 | 2 | 2 | 2 | 3 | 1 | 2 | | 16 |
| Automobile Right-Of-Way | | 1 | | | | 1 | 1 | 3 | 1 | 1 | | 8 |
| Pedestrian Right-Of-Way | | | | 1 | 1 | | | 1 | | | | 3 |
| Pedestrian Violation | | | | | | | | | | | | |
| Traffic Signals And Signs | 1 | | 2 | | 1 | 1 | 1 | 1 | | | | 7 |
| Unsafe Starting Or Backing | | | 1 | | 1 | 1 | | | | | | 3 |
| Hazardous Parking | | | | | | | | | | | | |
| Other Equipment | 1 | | | 1 | | 1 | 1 | | | | | 4 |
| Other Improper Driving | | | | | | | | | | | | |
| Other Than Driver | | | | | | | | | | | | |
| Unknown | | | | | | | | | | | | |
| Not Stated | | | | | | | | | | | | |
| TOTAL | 5 | 6 | 6 | 6 | 10 | 9 | 7 | 13 | 5 | 3 | | 70 |

*May be under reported for Non-CHP agencies due to a traffic collision report form revision of July 2003 (See Preface for details.)

TABLE 6F INJURY COLLISIONS WHERE TRUCK DRIVER WAS AT FAULT BY AGE BY PRIMARY COLLISION FACTOR - 2014

| PRIMARY COLLISION FACTOR* | AGE | | | | | | | | | | | 65 and over | Not Stated | TOTAL | |
|--|------|-------|-------|-------|-------|-------|-------|-------|-------|-------|-------|----------------|---------------|-------|-------|
| | 0-14 | 15-19 | 20-24 | 25-29 | 30-34 | 35-39 | 40-44 | 45-49 | 50-54 | 55-59 | 60-64 | | | | |
| Driving Or Bicycling Under Influence Of Alcohol Or Drug | | | | 1 | 6 | 5 | 0 | 1 | 4 | 4 | 4 | 2 | 1 | | 28 |
| Impeding Traffic | | | | | | | 0 | | | | | 1 | | | 1 |
| Unsafe Speed | 1 | 10 | 76 | 111 | 101 | 114 | 132 | 163 | 126 | 106 | 49 | 34 | 16 | | 1,039 |
| Following Too Closely | | | 3 | 2 | 5 | 3 | 8 | 5 | 5 | 4 | 2 | 3 | | | 40 |
| Wrong Side Of Road | | | 2 | 1 | 2 | 4 | 2 | 5 | 4 | 3 | 3 | 0 | 2 | 1 | 29 |
| Improper Passing | | | | | | 1 | 1 | | 3 | | 1 | | | | 6 |
| Unsafe Lane Change | | 1 | 15 | 21 | 25 | 30 | 36 | 37 | 62 | 27 | 28 | 7 | 57 | | 346 |
| Improper Turning | | 3 | 30 | 33 | 46 | 51 | 59 | 53 | 61 | 43 | 34 | 19 | 21 | | 453 |
| Automobile Right-Of-Way | | 7 | 19 | 20 | 22 | 20 | 25 | 29 | 24 | 17 | 11 | 16 | 6 | | 216 |
| Pedestrian Right-Of-Way | | | 2 | 2 | 1 | 1 | 4 | 3 | 4 | 1 | 2 | 4 | 4 | | 28 |
| Pedestrian Violation | | | | | | | | 1 | | 1 | | | 1 | | 3 |
| Traffic Signals And Signs | | | 1 | 9 | 11 | 12 | 10 | 13 | 9 | 19 | 11 | 5 | 10 | 3 | 113 |
| Unsafe Starting Or Backing | 1 | | 4 | 7 | 11 | 8 | 8 | 10 | 14 | 6 | 6 | 5 | 2 | | 82 |
| Hazardous Parking | | | 2 | | | | | | 1 | 2 | | | 2 | | 7 |
| Lights | | | | | | | | | 1 | | | | | | 1 |
| Other Equipment | | | 2 | 1 | 3 | 1 | | 3 | | 2 | | 1 | 1 | | 14 |
| Other Hazardous Violation | | | 1 | 3 | 2 | 2 | 2 | 2 | 9 | 1 | 1 | 2 | 4 | | 29 |
| Other Improper Driving Other Than Driver | | 1 | | | | 2 | 1 | 2 | | 1 | | | | | 7 |
| Unknown | | | | | | | | | | | | | | 3 | 3 |
| Not Stated | | | 4 | 2 | 1 | 1 | 5 | 4 | 2 | 2 | | 2 | 5 | | 28 |
| TOTAL | 2 | 25 | 169 | 221 | 238 | 246 | 300 | 329 | 338 | 231 | 142 | 106 | 126 | | 2,473 |

*May be under reported for Non-CHP agencies due to a traffic collision report form revision of July 2003 (See Preface for details.)

TABLE 6G PERSONS KILLED IN TRUCK COLLISIONS WHERE TRUCK DRIVER WAS AT FAULT BY PRIMARY COLLISION FACTOR - 2014

| PRIMARY COLLISION FACTOR* | AGE | | | | | | | | | | | 65 and over | Not Stated | TOTAL | |
|---|------|-------|-------|-------|-------|-------|-------|-------|-------|-------|-------|-------------|------------|-------|----|
| | 0-14 | 15-19 | 20-24 | 25-29 | 30-34 | 35-39 | 40-44 | 45-49 | 50-54 | 55-59 | 60-64 | | | | |
| Driving Or Bicycling Under Influence Of Alcohol Or Drug | 1 | | | | | 1 | | | 1 | 1 | 1 | | | | 5 |
| Impeding Traffic | | | | | | | | | | | | | | | |
| Unsafe Speed | 2 | | 1 | 1 | 2 | 2 | 3 | 2 | 3 | 3 | 2 | 1 | | | 22 |
| Following Too Closely | | | | | | | | | | | | | | | |
| Wrong Side Of Road | | | | | | | 1 | | | | | | | | 1 |
| Improper Passing | | | | | | | 1 | | | | | | | | 1 |
| Unsafe Lane Change | | | | | | | | 1 | | | | | | | 1 |
| Improper Turning | | 2 | | 1 | 2 | 1 | 1 | 1 | 1 | 4 | 2 | 1 | | | 16 |
| Automobile Right-Of-Way | | | 3 | | | | 1 | 2 | 1 | 1 | 1 | 1 | 1 | 1 | 11 |
| Pedestrian Right-Of-Way | 1 | | | | | | | 1 | | | | 1 | | | 3 |
| Pedestrian Violation | | | | | | | | | | | | | | | |
| Traffic Signals And Signs | | 2 | | | 1 | 1 | | 1 | 3 | | 1 | | | | 9 |
| Unsafe Starting Or Backing | | | 1 | | | | 1 | | | | 1 | | | | 3 |
| Hazardous Parking | | | | | | | | | | | | | | | |
| Lights | | | | | | | | | | | | | | | |
| Other Equipment | | | 1 | 1 | | | 1 | | 1 | | | | | | 4 |
| Other Hazardous Violation | | | | | | | | | | | | | | | |
| Other Improper Driving | | | | | | | | | | | | | | | |
| Unknown | | | | | | | | | | | | | | | |
| Not Stated | | | | | | | | | | | | | | | |
| TOTAL | 4 | 4 | 6 | 3 | 5 | 5 | 9 | 8 | 10 | 9 | 8 | 4 | 1 | | 76 |

*May be under reported for Non-CHP agencies due to a traffic collision report form revision of July 2003 (See Preface for details.)

TABLE 6H PERSONS INJURED IN TRUCK COLLISIONS WHERE TRUCK DRIVER WAS AT FAULT BY PRIMARY COLLISION FACTOR - 2014

| PRIMARY COLLISION FACTOR* | AGE | | | | | | | | | | | | Not Stated | TOTAL |
|---|------|-------|-------|-------|-------|-------|-------|-------|-------|-------|-------|-------------|------------|-------|
| | 0-14 | 15-19 | 20-24 | 25-29 | 30-34 | 35-39 | 40-44 | 45-49 | 50-54 | 55-59 | 60-64 | 65 and over | | |
| Driving Or Bicycling Under Influence Of Alcohol Or Drug | | 2 | 11 | 4 | 7 | 1 | 3 | 8 | 4 | 5 | 1 | 2 | | 48 |
| Impeding Traffic | | | 1 | | | | | | | | | | | 1 |
| Unsafe Speed | 63 | 54 | 139 | 158 | 153 | 165 | 180 | 181 | 169 | 119 | 96 | 122 | 15 | 1,614 |
| Following Too Closely | 6 | 5 | 7 | 9 | 10 | 4 | 4 | 7 | 5 | | 2 | 6 | 1 | 66 |
| Wrong Side Of Road | | 2 | 4 | 3 | 5 | 3 | | 6 | 2 | 3 | 3 | 8 | 1 | 40 |
| Improper Passing | | | | | 2 | 1 | 1 | 2 | | | | | | 6 |
| Unsafe Lane Change | 16 | 30 | 49 | 43 | 28 | 29 | 48 | 48 | 48 | 39 | 30 | 30 | | 438 |
| Improper Turning | 12 | 16 | 55 | 57 | 64 | 60 | 66 | 56 | 69 | 51 | 40 | 37 | 2 | 585 |
| Automobile Right-Of-Way | 43 | 16 | 34 | 33 | 31 | 35 | 34 | 21 | 23 | 18 | 17 | 27 | 3 | 335 |
| Pedestrian Right-Of-Way | 10 | 2 | 2 | | 1 | 2 | 2 | | 2 | 2 | 1 | 5 | | 29 |
| Pedestrian Violation | | | 1 | | 1 | | | | | | 1 | | | 3 |
| Traffic Signals And Signs | 16 | 12 | 18 | 13 | 10 | 7 | 13 | 10 | 14 | 16 | 12 | 26 | 4 | 171 |
| Unsafe Starting Or Backing | 2 | 2 | 13 | 15 | 7 | 6 | 10 | 7 | 8 | 14 | 6 | 6 | | 96 |
| Hazardous Parking | | 2 | | 1 | | 1 | 1 | | 1 | 3 | | | | 9 |
| Lights | | | | | | | 1 | | 1 | | | | | 2 |
| Other Equipment | 1 | 1 | 1 | 2 | 3 | 5 | 3 | 5 | | | 1 | 2 | | 24 |
| Other Hazardous Violation | 3 | 1 | 4 | 4 | 4 | 2 | 1 | 1 | 6 | 4 | 2 | 1 | | 33 |
| Other Improper Driving | | 1 | 1 | | 1 | 1 | 3 | 1 | | | | | | 8 |
| Unknown | 1 | | | | | 1 | 1 | | | | | | | 3 |
| Not Stated | 4 | 3 | 6 | 2 | 4 | 4 | 3 | 4 | 2 | 2 | 3 | 1 | 2 | 40 |
| TOTAL | 177 | 149 | 346 | 344 | 331 | 327 | 374 | 357 | 354 | 276 | 215 | 273 | 28 | 3,551 |

*May be under reported for Non-CHP agencies due to a traffic collision report form revision of July 2003 (See Preface for details.)

TABLE 6I FATAL AND INJURY TRUCK COLLISIONS WHERE TRUCK DRIVER WAS AT FAULT BY PRIMARY COLLISION FACTOR 2010 - 2014

| PRIMARY COLLISION FACTOR* | 2010 | | 2011 | | 2012 | | 2013 | | 2014 | |
|---|-------|--------|-------|--------|-------|--------|-------|--------|-------|--------|
| | Fatal | Injury | Fatal | Injury | Fatal | Injury | Fatal | Injury | Fatal | Injury |
| Driving Or Bicycling Under Influence Of Alcohol Or Drug | 1 | 34 | 1 | 45 | 2 | 44 | 2 | 32 | 4 | 28 |
| Impeding Traffic | | 1 | | 1 | | 1 | | 1 | | 1 |
| Unsafe Speed | 20 | 913 | 20 | 918 | 19 | 888 | 18 | 980 | 22 | 1,039 |
| Following Too Closely | | 52 | | 49 | 1 | 58 | | 63 | | 40 |
| Wrong Side Of Road | 1 | 30 | 1 | 39 | 5 | 39 | 2 | 37 | 1 | 29 |
| Improper Passing | | 2 | | 12 | 1 | 6 | | 9 | 1 | 6 |
| Unsafe Lane Change | 1 | 305 | 2 | 318 | 2 | 316 | 1 | 327 | 1 | 346 |
| Improper Turning | 6 | 385 | 23 | 411 | 26 | 407 | 27 | 446 | 16 | 453 |
| Automobile Right-Of-Way | 5 | 186 | 5 | 219 | 3 | 192 | 8 | 200 | 8 | 216 |
| Pedestrian Right-Of-Way | 3 | 27 | 4 | 23 | 5 | 25 | 3 | 31 | 3 | 28 |
| Pedestrian Violation | | | | 2 | | 1 | | 2 | | 3 |
| Traffic Signals And Signs | 3 | 80 | | 81 | 8 | 86 | 7 | 82 | 7 | 113 |
| Unsafe Starting Or Backing | 1 | 67 | | 78 | | 78 | 2 | 81 | 3 | 82 |
| Hazardous Parking | | 6 | | 3 | | 1 | | 9 | | 7 |
| Lights | | | | | | | | | | 1 |
| Brakes | | 2 | | 1 | | 1 | | 1 | | |
| Other Equipment | | 8 | | 4 | 1 | 15 | | 15 | 4 | 14 |
| Other Hazardous Violation | | 31 | 1 | 22 | | 32 | | 21 | | 29 |
| Other Improper Driving | | 7 | | 3 | 1 | 7 | | 5 | | 7 |
| Fell Asleep ^{1/} | | | | | | | | | | |
| Unknown | | 1 | | 1 | | 1 | | 1 | | 3 |
| Not Stated | | 19 | | 27 | 1 | 13 | | 17 | | 28 |
| TOTAL | 41 | 2,156 | 57 | 2,257 | 75 | 2,211 | 70 | 2,360 | 70 | 2,473 |

*May be under reported for Non-CHP agencies due to a traffic collision report form revision of July 2003 (See Preface for details.)

^{1/} Fell Asleep is no longer a Primary Collision Factor since July 2003 Traffic Collision form revision.

TABLE 6J FATAL AND INJURY TRUCK COLLISIONS COMPARED TO ALL FATAL AND INJURY COLLISIONS 2010 - 2014

| | 2010 | 2011 | 2012 | 2013 | 2014 |
|-------------------------|---------|---------|---------|---------|---------|
| COLLISIONS* | | | | | |
| Total fatal collisions | 2,520 | 2,628 | 2,758 | 2,853 | 2,882 |
| Fatal truck collisions | 214 | 245 | 235 | 256 | 279 |
| Percent of total | 8.5 | 9.3 | 8.5 | 9.0 | 9.7 |
| Total injury collisions | 161,094 | 159,115 | 159,696 | 156,909 | 162,742 |
| Injury truck collisions | 5,065 | 5,155 | 5,092 | 5,209 | 5,476 |
| Percent of total | 3.1 | 3.2 | 3.2 | 3.3 | 3.4 |

*May be under reported for Non-CHP agencies due to a traffic collision report form revision of July 2003 (See Preface for details.)

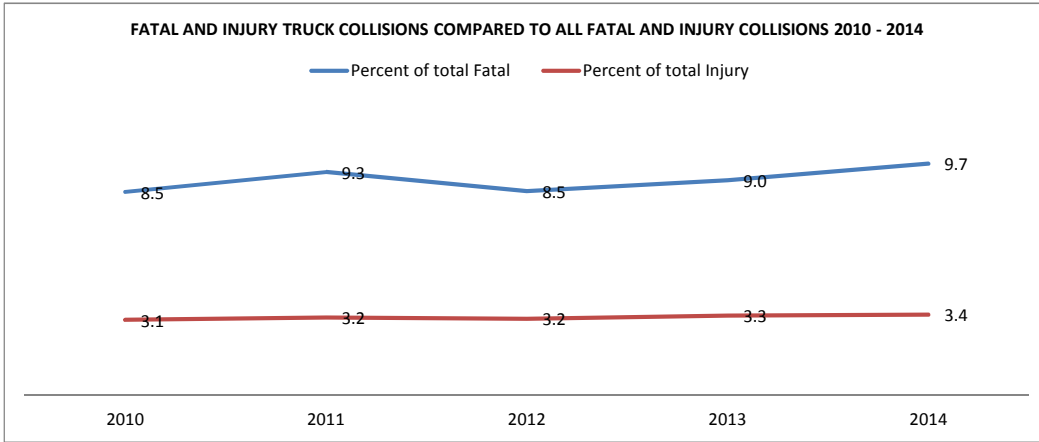


TABLE 6K TRUCK DRIVERS IN FATAL COLLISIONS BY AGE BY MOVEMENT PRECEDING COLLISIONS - 2014

| MOVEMENT PRECEDING COLLISION* | AGE | | | | | | | | | | | TOTAL | |
|-------------------------------|------|-------|-------|-------|-------|-------|-------|-------|-------|-------|-------------|-------|------------|
| | 0-14 | 20-24 | 25-29 | 30-34 | 35-39 | 40-44 | 45-49 | 50-54 | 55-59 | 60-64 | 65 and over | | Not Stated |
| Stopped | | | 1 | 1 | 1 | 1 | 3 | 4 | 2 | | 1 | | 14 |
| Proceeding straight | | 6 | 11 | 19 | 20 | 29 | 19 | 34 | 26 | 16 | 6 | 5 | 191 |
| Ran off road | | 1 | 1 | | | 1 | 1 | | 1 | 2 | | | 7 |
| Making right turn | | 1 | 2 | 3 | | | 3 | 1 | 1 | 1 | | | 12 |
| Making left turn | | 1 | | 1 | 1 | 1 | 1 | 2 | 2 | 3 | | | 12 |
| Making U turn | | | 1 | | | | | 1 | | | | | 2 |
| Backing | | | | | | | 1 | | | | | | 1 |
| Slowing/stopping | 1 | 2 | | | 1 | 2 | 1 | | 1 | | | | 8 |
| Changing lanes | | 1 | 1 | | | 1 | | | | | | | 3 |
| Entering traffic | | | 1 | | | | | 1 | 1 | | 1 | | 4 |
| Other unsafe turning | | | | | | | | 1 | | | | | 1 |
| Crossed into opposing lane | | | | | | 1 | 1 | | | | | | 2 |
| Merging | | | | 2 | | 1 | 1 | | | | | | 4 |
| Other | | | | | 3 | | | 2 | 2 | | 2 | | 9 |
| Not stated | | 1 | | 2 | | | | 2 | | | | | 5 |
| TOTAL | 1 | 13 | 18 | 28 | 26 | 37 | 31 | 48 | 36 | 22 | 10 | 5 | 275 |

*May be under reported for Non-CHP agencies due to a traffic collision report form revision of July 2003 (See Preface for details.)

TABLE 6L TRUCK DRIVERS IN INJURY COLLISIONS BY AGE BY MOVEMENT PRECEDING COLLISION - 2014

| MOVEMENT PRECEDING COLLISION* | AGE | | | | | | | | | | | | Not Stated | TOTAL |
|-------------------------------|------|-------|-------|-------|-------|-------|-------|-------|-------|-------|-------|-------------|------------|-------|
| | 0-14 | 15-19 | 20-24 | 25-29 | 30-34 | 35-39 | 40-44 | 45-49 | 50-54 | 55-59 | 60-64 | 65 and over | | |
| Stopped | 1 | 4 | 21 | 45 | 38 | 60 | 68 | 86 | 65 | 54 | 31 | 12 | 14 | 499 |
| Proceeding straight | 2 | 17 | 153 | 266 | 302 | 330 | 420 | 488 | 465 | 379 | 210 | 115 | 91 | 3,238 |
| Ran off road | | 2 | 6 | 9 | 9 | 8 | 14 | 12 | 10 | 11 | 5 | 5 | | 91 |
| Making right turn | | 2 | 6 | 16 | 25 | 28 | 28 | 42 | 39 | 27 | 20 | 16 | 14 | 263 |
| Making left turn | | 8 | 31 | 29 | 30 | 30 | 43 | 51 | 46 | 26 | 16 | 19 | 8 | 337 |
| Making U turn | | | | 1 | 3 | 3 | 7 | 5 | 5 | 2 | 2 | 2 | 2 | 32 |
| Backing | 1 | | 2 | 6 | 7 | 7 | 8 | 7 | 9 | 4 | 6 | 5 | 1 | 63 |
| Slowing/stopping | 1 | 2 | 11 | 22 | 22 | 29 | 35 | 33 | 41 | 35 | 20 | 7 | 7 | 265 |
| Passing other vehicle | | | | 3 | | 3 | 4 | | 6 | | 2 | 1 | | 19 |
| Changing lanes | | 1 | 20 | 23 | 28 | 34 | 39 | 51 | 68 | 28 | 33 | 8 | 61 | 394 |
| Entering traffic | | 1 | 2 | 6 | 9 | 4 | 6 | 8 | 7 | 8 | 3 | 4 | 2 | 60 |
| Other unsafe turning | | | 7 | 6 | 4 | 7 | 4 | 7 | 6 | 6 | 1 | 2 | 1 | 51 |
| Crossed into opposing lane | | 1 | 2 | 1 | 6 | 1 | 2 | 5 | 2 | 3 | 1 | | 2 | 26 |
| Parked | | | | 3 | | | | 1 | 1 | | 2 | 1 | 1 | 9 |
| Merging | | | 1 | 1 | 1 | 1 | 2 | 2 | 1 | 2 | 2 | 1 | 1 | 15 |
| Traveling wrong way | | | | | 1 | | 1 | | | | | | | 2 |
| Other | | 1 | 8 | 12 | 17 | 22 | 21 | 18 | 28 | 15 | 13 | 4 | 8 | 167 |
| Not stated | | 1 | 1 | | 3 | | 5 | 5 | 4 | 2 | | 4 | 2 | 27 |
| TOTAL | 5 | 40 | 271 | 449 | 505 | 567 | 707 | 821 | 803 | 602 | 367 | 206 | 215 | 5,558 |

*May be under reported for Non-CHP agencies due to a traffic collision report form revision of July 2003 (See Preface for details.)

^{1/} Anomalies are due to re-engineering of SWITRS beginning with 2002 data.