

TABLE 3A DRIVERS IN FATAL AND INJURY COLLISIONS AND DRIVERS WHO WERE AT FAULT BY TYPE OF VEHICLE - 2015

	DRIVERS IN FATAL COLLISIONS			DRIVERS IN INJURY COLLISIONS		
	Total	At Fault	Percent At Fault	Total	At Fault	Percent At Fault
STATEWIDE VEHICLE TYPE*						
Passenger car	2,932	1,487	50.7	242,975	114,317	47.0
Passenger car with trailer	2	2	100.0	230	116	50.4
Motorcycle/scooter	519	351	67.6	13,555	7,251	53.5
Moped	1	1	100.0	96	48	50.0
Pickup or panel truck	689	348	50.5	32,030	16,092	50.2
Pickup or panel truck with trailer	24	6	25.0	757	361	47.7
Truck or truck tractor	104	32	30.8	2,902	1,434	49.4
Truck or truck tractor with trailer	180	42	23.3	3,174	1,254	39.5
School bus	7	3	42.9	336	98	29.2
Other bus	21	7	33.3	1,462	522	35.7
Emergency vehicle	12	3	25.0	1,389	527	37.9
Highway construction equipment	2	1	50.0	28	7	25.0
Other	18	11	61.1	390	190	48.7
Not stated "	253	98	38.7	30,185	15,632	51.8
TOTAL	4,764	2,392	50.2	329,509	157,849	47.9

*May be under reported for non-CHP agencies due to a traffic collision report form revision July 2003. (See Preface for details.)

" May be over reported for non-CHP agencies due to a traffic collision report form revision July 2003. (See Preface for details.)

TABLE 3B DRIVERS IN FATAL AND INJURY COLLISIONS BY AGE COMPARED TO LICENSED DRIVERS IN CALIFORNIA - 2015

DRIVERS IN COLLISIONS

AGE	LICENSED DRIVERS				Per 10,000		PERCENT OF TOTAL DRIVERS			
	TOTAL	Male	Female	Fatal	Injury	Licensed Drivers		Licensed	Fatal	Injury
						Fatal	Injury	Drivers	Collisions	Collisions
0-14	-	-	-	2	347	-	-	-	*	0.1
15-19	862,592	447,818	414,774	284	21518	3	249	3.3	6.0	6.5
20-24	2,329,345	1,205,603	1,123,742	694	47404	3	204	9.0	14.6	14.4
25-29	2,610,797	1,334,599	1,276,198	594	40921	2	157	10.1	12.5	12.4
30-34	2,571,859	1,310,072	1,261,787	462	33492	2	130	9.9	9.7	10.2
35-39	2,360,354	1,195,125	1,165,229	377	28513	2	121	9.1	7.9	8.7
40-44	2,252,218	1,137,565	1,114,653	356	25961	2	115	8.7	7.5	7.9
45-49	2,344,130	1,198,018	1,146,112	342	25750	1	110	9.0	7.2	7.8
50-54	2,400,969	1,227,786	1,173,183	410	25133	2	105	9.3	8.6	7.6
55-59	2,292,393	1,164,772	1,127,621	346	21442	2	94	8.8	7.3	6.5
60-64	1,958,241	985,850	972,391	232	16236	1	83	7.6	4.9	4.9
65-69	1,583,521	793,788	789,733	176	11290	1	71	6.1	3.7	3.4
70-74	1,010,641	506,748	503,893	105	7026	1	70	3.9	2.2	2.1
75-79	638,158	320,802	317,356	75	4596	1	72	2.5	1.6	1.4
80-84	396,062	199,523	196,539	65	2850	2	72	1.5	1.4	0.9
85-89	216,314	107,134	109,180	42	1569	2	73	0.8	0.9	0.5
90 and over	87,257	42,472	44,785	20	638	2	73	0.3	0.4	0.2
Not Stated	-	-	-	182	14823	-	-	-	3.8	4.5
TOTAL	25,914,851	13,177,675	12,737,176	4,764	329,509	2	127	100.0	100.0	100.0

*Less than 0.1 percent.

TABLE 3C DRIVERS IN FATAL AND INJURY COLLISIONS AND DRIVERS WHO WERE AT FAULT BY SEX BY AGE - 2015

AGE	TOTAL DRIVERS					DRIVERS AT FAULT				
	Fatal		Injury		TOTAL Drivers	Fatal		Injury		TOTAL AT Fault
	Male	Female	Male	Female		Male	Female	Male	Female	
0-14	2		207	140	349	0		125	70	195
15	6		129	82	217	5		91	53	149
16	17	7	939	846	1,809	13	5	701	563	1,282
17	34	8	2,053	1,610	3,705	22	6	1,413	1,039	2,480
18	62	24	4,147	2,960	7,193	39	15	2,855	1,868	4,777
19	99	27	5,072	3,680	8,878	61	12	3,357	2,175	5,605
20	96	33	5,355	3,865	9,349	73	13	3,433	2,219	5,738
21	107	31	5,499	4,033	9,670	71	18	3,522	2,222	5,833
22	105	41	5,527	4,130	9,803	72	21	3,448	2,148	5,689
23	103	34	5,421	4,127	9,685	66	16	3,250	2,075	5,407
24	122	22	5,442	4,005	9,591	76	12	3,154	1,970	5,212
25	86	29	5,302	3,820	9,237	57	16	2,998	1,866	4,937
26	105	34	4,886	3,638	8,663	68	16	2,721	1,717	4,522
27	103	32	4,681	3,524	8,340	67	16	2,447	1,556	4,086
28	78	21	4,428	3,215	7,742	49	7	2,272	1,451	3,779
29	85	21	4,253	3,174	7,533	50	10	2,143	1,374	3,577
30	72	34	4,135	3,009	7,250	33	15	2,081	1,248	3,377
31	65	24	3,832	2,884	6,805	40	9	1,845	1,209	3,103
32	63	25	3,919	2,857	6,864	39	10	1,852	1,117	3,018
33	87	21	3,806	2,755	6,669	49	7	1,760	1,133	2,949
34	55	16	3,576	2,719	6,366	23	7	1,653	1,017	2,700
35	72	18	3,565	2,587	6,242	36	6	1,606	1,059	2,707
36	66	15	3,280	2,487	5,848	35	3	1,450	915	2,403
37	58	16	3,190	2,475	5,739	28	6	1,375	959	2,368
38	42	24	3,175	2,383	5,624	18	9	1,354	902	2,283
39	51	15	3,052	2,319	5,437	26	5	1,287	837	2,155
40	48	22	2,915	2,198	5,183	21	8	1,189	789	2,007
41	53	20	2,929	2,253	5,255	20	7	1,223	842	2,092
42	53	12	2,891	2,145	5,101	23	3	1,220	752	1,998
43	46	24	2,963	2,237	5,270	21	10	1,209	838	2,078
44	57	21	3,151	2,279	5,508	28	10	1,236	817	2,091
45	62	25	3,087	2,252	5,426	20	11	1,239	804	2,074
46	54	14	3,097	2,179	5,344	21	6	1,204	769	2,000
47	47	16	2,940	2,118	5,121	16	8	1,170	714	1,908
48	44	16	2,917	2,101	5,078	20	7	1,109	780	1,916
49	50	14	3,002	2,057	5,123	18	4	1,189	715	1,926
50	61	18	3,034	2,085	5,198	25	7	1,188	734	1,954
51	68	27	3,016	2,097	5,208	30	12	1,193	770	2,005
52	50	14	2,976	2,085	5,125	20	6	1,186	745	1,957
53	65	23	2,969	1,996	5,053	26	8	1,157	688	1,879
54	64	20	2,932	1,943	4,959	24	11	1,158	690	1,883
55	45	29	2,837	1,853	4,764	17	9	1,166	712	1,904
56	61	17	2,717	1,707	4,502	26	6	1,098	583	1,713
57	70	11	2,637	1,683	4,401	25	4	1,027	579	1,635
58	55	9	2,480	1,678	4,222	22	2	983	608	1,615
59	41	8	2,326	1,524	3,899	16	8	956	573	1,553
60-64	173	59	9,782	6,454	16,468	78	18	4,011	2,526	6,633
65-69	137	39	6,725	4,565	11,466	63	23	2,943	1,953	4,982
70-74	83	22	4,193	2,833	7,131	39	8	1,958	1,380	3,385
75-79	57	18	2,746	1,850	4,671	34	11	1,380	1,011	2,436
80-84	46	19	1,674	1,176	2,915	30	11	981	749	1,771
85-89	26	16	876	693	1,611	17	9	580	479	1,085
90 and over	17	3	399	239	658	13	2	274	168	457
Not Stated	179	3	13,538	1,285	15,005	72	2	10,058	841	10,973
TOTAL	3,653	1,111	196,620	132,889	334,273	1,901	491	99,478	58,371	160,241

TABLE 3D DRIVERS IN FATAL COLLISIONS BY AGE BY HOUR OF DAY - 2015

		AGE											TOTAL	
		0-19	20-24	25-29	30-34	35-39	40-44	45-49	50-54	55-59	60-64	65 and over	Not Stated	
HOUR OF DAY														
A.M.	Total	105	315	262	176	145	135	149	166	133	81	137	69	1,873
	Midnight - 12:59 A.M.	13	39	33	16	14	14	11	12	7	4	8	10	181
	1:00 - 1:59 A.M.	12	37	24	15	9	8	8	13	3	3	6	15	153
	2:00 - 2:59 A.M.	12	46	34	16	19	11	9	3	10	5	3	11	179
	3:00 - 3:59 A.M.	11	38	16	15	7	5	5	13	8	2	5	7	132
	4:00 - 4:59 A.M.	8	17	17	16	9	7	10	15	9	4	5	9	126
	5:00 - 5:59 A.M.	11	21	23	16	19	14	19	22	18	14	12	6	195
	6:00 - 6:59 A.M.	13	35	19	31	15	17	26	21	21	15	15	4	232
	7:00 - 7:59 A.M.	3	22	18	14	12	9	15	19	16	7	12	4	151
	8:00 - 8:59 A.M.	6	18	15	14	9	10	10	12	13	7	9	2	125
	9:00 - 9:59 A.M.	5	13	18	8	12	15	13	8	7	5	17		121
	10:00 - 10:59 A.M.	6	18	26	7	13	15	13	15	9	10	23	1	156
	11:00 - 11:59 A.M.	5	11	19	8	7	10	10	13	12	5	22		122
P.M.	Total	180	370	325	280	226	219	190	238	210	147	342	106	2,833
	Noon - 12:59 P.M.	12	20	21	20	13	12	11	15	8	17	41	2	192
	1:00 - 1:59 P.M.	11	22	24	17	13	19	18	13	22	9	43	2	213
	2:00 - 2:59 P.M.	6	25	19	21	16	20	19	26	20	10	53	3	238
	3:00 - 3:59 P.M.	16	18	26	17	13	16	17	24	14	18	31	1	211
	4:00 - 4:59 P.M.	10	29	21	24	25	29	14	21	23	13	30	1	240
	5:00 - 5:59 P.M.	17	35	20	27	18	23	23	15	20	15	22	5	240
	6:00 - 6:59 P.M.	22	35	38	24	35	22	15	33	19	17	35	11	306
	7:00 - 7:59 P.M.	17	27	34	31	25	16	24	24	17	14	15	7	251
	8:00 - 8:59 P.M.	15	43	28	28	20	22	13	20	24	14	29	19	275
	9:00 - 9:59 P.M.	19	47	35	25	23	16	9	19	21	10	18	21	263
	10:00 - 10:59 P.M.	21	45	33	32	19	13	14	9	11	5	19	20	241
	11:00 - 11:59 P.M.	14	24	26	14	6	11	13	19	11	5	6	14	163
	Unknown Hour	1	9	7	6	6	2	3	6	3	4	4	7	58
TOTAL		286	694	594	462	377	356	342	410	346	232	483	182	4,764

Bold number is highest hour and age group.

DRIVERS IN FATAL COLLISIONS BY AGE 2015

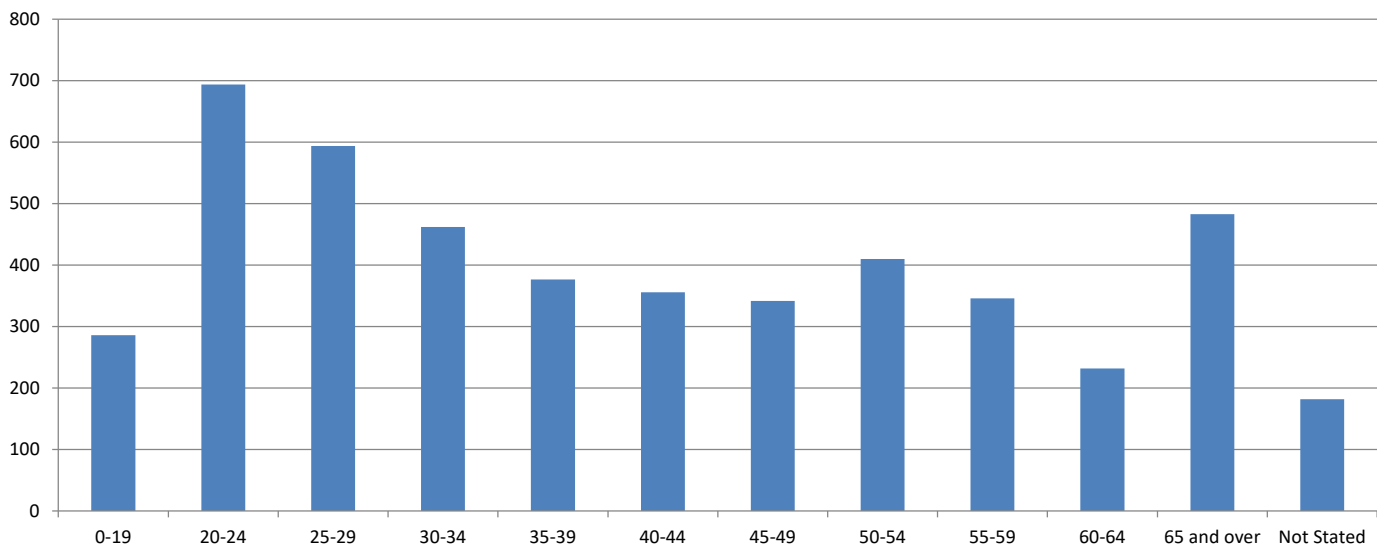


TABLE 3E DRIVERS IN INJURY COLLISIONS BY AGE BY HOUR OF DAY - 2015

HOUR OF DAY	AGE												TOTAL
	0-19	20-24	25-29	30-34	35-39	40-44	45-49	50-54	55-59	60-64	65 and over	Not Stated	
A.M. Total	6,345	16,088	14,427	11,939	9,947	9,137	8,864	8,645	7,198	5,538	9,179	4,704	112,011
Midnight - 12:59 A.M.	382	976	689	495	336	259	204	226	189	107	133	335	4,331
1:00 - 1:59 A.M.	307	916	645	423	256	230	216	186	137	100	82	271	3,769
2:00 - 2:59 A.M.	285	947	694	403	257	184	187	150	122	78	67	292	3,666
3:00 - 3:59 A.M.	162	668	424	269	181	134	114	124	100	66	59	168	2,469
4:00 - 4:59 A.M.	160	567	408	263	195	172	155	189	116	98	88	148	2,559
5:00 - 5:59 A.M.	202	735	700	527	460	396	429	411	334	253	212	253	4,912
6:00 - 6:59 A.M.	395	1,204	1,159	1,029	862	804	770	743	668	439	435	374	8,882
7:00 - 7:59 A.M.	1,127	2,176	2,296	2,074	1,842	1,723	1,649	1,574	1,149	782	965	693	18,050
8:00 - 8:59 A.M.	903	2,252	2,328	2,144	1,880	1,729	1,514	1,474	1,151	872	1,321	607	18,175
9:00 - 9:59 A.M.	709	1,814	1,724	1,497	1,277	1,170	1,219	1,148	1,033	833	1,691	486	14,601
10:00 - 10:59 A.M.	762	1,812	1,646	1,301	1,170	1,098	1,153	1,132	1,014	916	1,878	493	14,375
11:00 - 11:59 A.M.	951	2,021	1,714	1,514	1,231	1,238	1,254	1,288	1,185	994	2,248	584	16,222
P.M. Total	15,501	31,268	26,454	21,522	18,536	16,812	16,868	16,472	14,225	10,685	18,756	10,072	217,171
Noon - 12:59 P.M.	1,198	2,530	2,049	1,765	1,549	1,462	1,505	1,498	1,353	1,047	2,340	695	18,991
1:00 - 1:59 P.M.	1,313	2,518	2,235	1,818	1,574	1,491	1,506	1,570	1,365	1,116	2,311	692	19,509
2:00 - 2:59 P.M.	1,620	2,977	2,363	2,046	1,842	1,773	1,751	1,836	1,573	1,251	2,438	788	22,258
3:00 - 3:59 P.M.	1,970	3,408	3,042	2,562	2,397	2,182	2,168	2,159	1,833	1,434	2,734	1,034	26,923
4:00 - 4:59 P.M.	1,701	3,466	2,937	2,530	2,234	2,096	2,073	2,010	1,765	1,266	2,219	1,029	25,326
5:00 - 5:59 P.M.	1,897	4,227	3,804	3,257	2,799	2,487	2,529	2,385	2,066	1,493	2,326	1,288	30,558
6:00 - 6:59 P.M.	1,567	3,273	3,023	2,428	2,002	1,847	1,853	1,679	1,513	1,140	1,626	1,118	23,069
7:00 - 7:59 P.M.	1,065	2,273	2,028	1,562	1,254	1,096	1,068	1,077	907	651	966	856	14,803
8:00 - 8:59 P.M.	960	1,923	1,530	1,119	960	840	864	787	693	482	779	725	11,662
9:00 - 9:59 P.M.	881	1,831	1,346	964	819	658	657	664	524	354	510	770	9,978
10:00 - 10:59 P.M.	749	1,540	1,168	828	661	525	509	485	377	275	328	582	8,027
11:00 - 11:59 P.M.	580	1,302	929	643	445	355	385	322	256	176	179	495	6,067
Unknown Hour	19	48	40	31	30	12	18	16	19	13	34	47	327
TOTAL	21,865	47,404	40,921	33,492	28,513	25,961	25,750	25,133	21,442	16,236	27,969	14,823	329,509

Bold number is highest hour and age group.

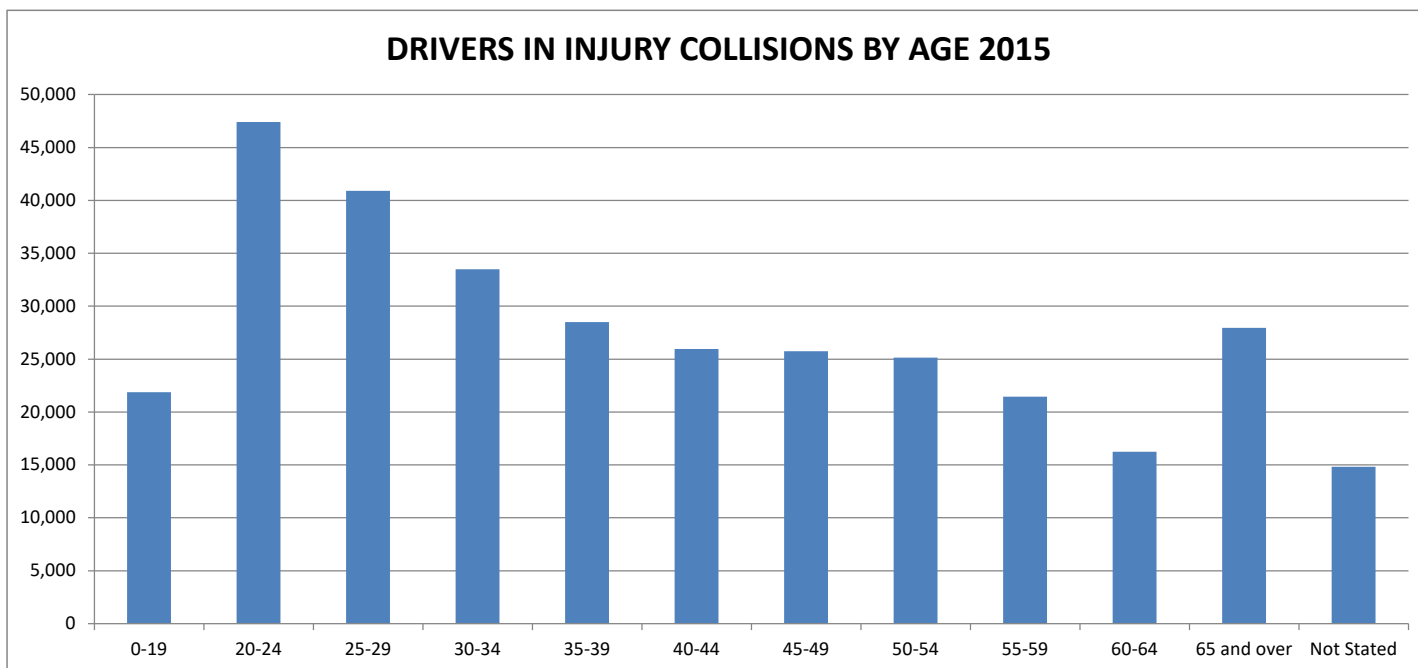


TABLE 3F DRIVERS IN FATAL COLLISIONS BY TYPE OF COLLISION BY MOVEMENT PRECEDING COLLISION - 2015

MOVEMENT PRECEDING COLLISION	DRIVERS IN COLLISIONS								TOTAL
	Head-On	Sideswipe	Rear End	Broadside	Hit Object	Overtaken	Auto/ Pedestrian	Other	
Stopped	13	9	150	31	11	2	9	3	228
Proceeding straight	381	188	349	640	239	85	738	70	2,690
Ran off road	15	2	4	2	280	85	9	5	402
Making right turn	3	1	3	10	3	1	10	5	36
Making left turn	45	9	4	189	11	3	45	7	313
Making U turn		1		25			2		28
Backing			1	3		1	7	5	17
Slowing/stopping	4	9	68	7	2	5	5		100
Passing other vehicle	13	8	4	8	3	4	2	1	43
Changing lanes	2	29	19	8	9	4	6	1	78
Parking maneuver				1	1				2
Entering traffic		2	2	27			6		37
Other unsafe turning	25	10	9	17	118	41	11	3	234
Crossed into opposing lane	141	25	2	17	9	8	2		204
Parked*			3	1				1	5
Merging		2	1	1					4
Traveling wrong way	42	1	1	1	5		1		51
Other	5	19	24	4	144	46	14	2	258
Not stated	2	2	2	7	5		11	5	34
TOTAL	691	317	646	999	840	285	878	108	4,764

*Anomalies are due to re-engineering of SWITRS beginning with 2002 data.

TABLE 3G DRIVERS IN INJURY COLLISIONS BY TYPE OF COLLISION BY MOVEMENT PRECEDING COLLISION - 2015

MOVEMENT PRECEDING COLLISION	DRIVERS IN COLLISIONS							Other	TOTAL
	Head-On	Sideswipe	Rear End	Broadside	Hit Object	Overturned	Auto/ Pedestrian		
Stopped	1,034	1,841	44,889	3,576	228	82	273	808	52,731
Proceeding straight	10,287	17,437	64,517	55,639	7,268	2,930	5,491	4,427	167,996
Ran off road	190	121	128	113	5,059	1,543	42	116	7,312
Making right turn	576	1,451	1,136	3,351	559	179	1,725	897	9,874
Making left turn	5,346	2,041	942	20,233	746	271	2,434	1,323	33,336
Making U turn	131	290	137	1,738	50	23	39	92	2,500
Backing	37	84	335	339	57	11	429	250	1,542
Slowing/stopping	136	479	17,926	360	146	250	133	205	19,635
Passing other vehicle	86	667	157	338	95	72	25	52	1,492
Changing lanes	60	5,305	2,271	458	476	264	36	173	9,043
Parking maneuver	10	71	64	35	26	3	44	17	270
Entering traffic	173	572	198	3,078	43	35	215	231	4,545
Other unsafe turning	306	808	597	359	2,906	965	91	109	6,141
Crossed into opposing lane	868	461	41	196	100	43	12	26	1,747
Parked*	31	132	106	54	24		20	62	429
Merging	14	191	135	52	28	19	11	19	469
Traveling wrong way	290	90	8	75	43	6	12	21	545
Other	98	1,090	628	366	4,369	1,166	91	103	7,911
Not stated	107	177	628	343	97	25	141	473	1,991
TOTAL	19,780	33,308	134,843	90,703	22,320	7,887	11,264	9,404	329,509

*Anomalies are due to re-engineering of SWITRS beginning with 2002 data.

TABLE 3H DRIVERS IN FATAL AND INJURY COLLISIONS BY INATTENTION BY COLLISION SEVERITY 2011-2015

	DRIVERS IN COLLISIONS									
	2011		2012		2013		2014		2015	
	Fatal	Injury	Fatal	Injury	Fatal	Injury	Fatal	Injury	Fatal	Injury
INATTENTION										
Cell Phone Handheld (7/03)	3	294	12	306	14	404	15	458	11	536
Cell Phone Hands Free (7/03)	1	67	3	65		79	1	94	3	126
Electronic Equipment		199	3	204	1	207	4	241	3	305
Radio/CD	7	350	7	364	1	366	5	441	4	498
Smoking	2	56	2	38	1	49	1	69		62
Eating	3	160	1	171	2	189	1	217	3	273
Children		179	3	207	4	181	3	215	4	243
Animal		73	1	69	1	71		66		81
Hygiene		23		30		39	1	30	1	37
Reading		54		37		55		38		30
Other	13	2,286	40	2,007	26	2,334	28	2,573	35	2,932
Cell Phone (prior to 7/03 form rev.)		2		2		2		2		1
Inattention not stated	65	6,824	41	6,655	34	6,102	28	6,096	21	6,269
TOTAL	94	10,567	113	10,155	84	10,078	87	10,540	85	11,393