

TABLE 6A FATAL AND INJURY TRUCK COLLISIONS BY MONTH 2011-2015

MONTH*	2011		2012		2013		2014		2015	
	Fatal	Injury	Fatal	Injury	Fatal	Injury	Fatal	Injury	Fatal	Injury
January	18	360	15	411	13	426	26	398	23	415
February	19	348	15	332	18	340	15	393	21	422
March	24	426	22	407	17	417	19	431	27	490
April	20	385	13	396	24	424	20	415	25	500
May	17	424	21	437	26	451	25	452	20	478
June	17	453	20	422	17	459	23	415	17	491
July	23	423	15	424	23	436	33	456	28	516
August	24	478	23	515	25	487	22	499	28	553
September	17	477	28	415	20	469	20	492	27	555
October	29	484	21	506	30	523	27	564	30	570
November	16	495	25	456	19	419	27	477	19	519
December	21	402	17	371	24	358	22	484	25	529
TOTAL	245	5,155	235	5,092	256	5,209	279	5,476	290	6,038

\*May be under reported for non-CHP agencies due to a traffic collision report form revision July 2003. (See Preface for details.)

TABLE 6B PERSONS KILLED AND INJURED IN TRUCK COLLISIONS BY MONTH 2011-2015

MONTH*	2011		2012		2013		2014		2015	
	Killed	Injured	Killed	Injured	Killed	Injured	Killed	Injured	Killed	Injured
January	19	501	15	590	13	586	28	573	26	608
February	22	499	17	458	18	475	15	533	24	578
March	26	595	23	610	22	612	23	599	29	696
April	25	523	14	574	24	609	30	611	27	741
May	19	583	21	600	28	651	25	664	21	694
June	19	629	24	660	18	696	26	618	18	688
July	26	620	16	619	27	650	38	656	32	735
August	26	652	24	735	28	712	22	751	30	805
September	21	706	32	585	21	699	22	696	33	794
October	34	689	23	742	33	728	28	797	30	786
November	18	683	34	645	20	579	28	653	19	723
December	23	569	18	522	26	514	25	680	26	750
TOTAL	278	7,249	261	7,340	278	7,511	310	7,831	315	8,598

\*May be under reported for non-CHP agencies due to a traffic collision report form revision July 2003. (See Preface for details.)

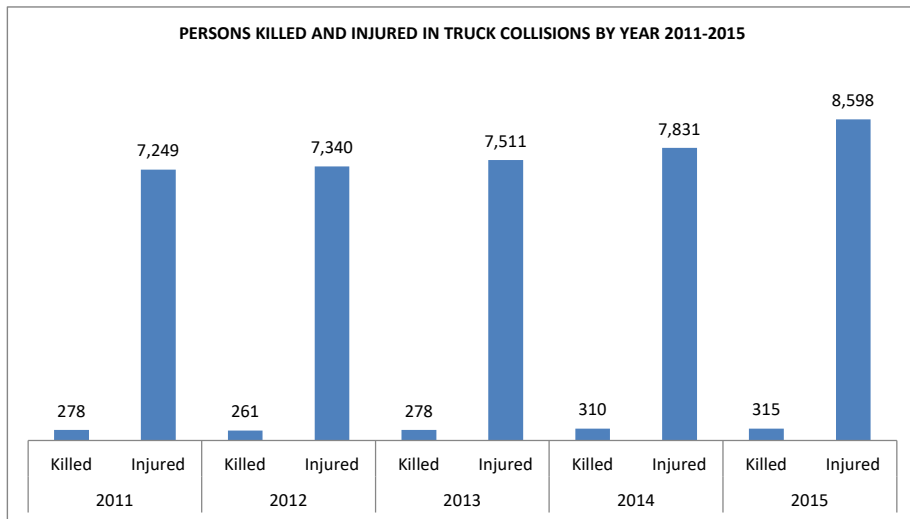


TABLE 6C FATAL AND INJURY TRUCK COLLISIONS BY COUNTY 2011-2015

COUNTY*	2011		2012		2013		2014		2015	
	Fatal	Injury	Fatal	Injury	Fatal	Injury	Fatal	Injury	Fatal	Injury
Alameda	7	236	3	238	9	244	7	253	7	298
Alpine		2						1		
Amador	3	3		5		2		7	1	2
Butte		20	2	21	2	22		30	3	18
Calaveras		2		6		9	1	5		5
Colusa	1	11	1	11	1	13		8	1	14
Contra Costa		63	3	72	4	72	4	77	4	102
Del Norte	1	1		4	1	2	1	2		4
El Dorado	3	15		9		11		5	2	16
Fresno	8	150	11	123	10	127	12	131	9	144
Glenn	1	3	1	4	1	7	1	8		8
Humboldt	2	15		22	2	16	3	6	1	15
Imperial	1	32	5	39	7	36	6	44	8	40
Inyo		2		2		2		2		3
Kern	19	207	19	193	19	188	15	216	24	230
Kings	1	38	5	38	3	36	4	34	5	53
Lake	1	7	1	11	2	7		9	3	7
Lassen	1	2	3	5		10		9	1	5
Los Angeles	47	1,607	39	1,591	53	1,689	61	1,635	49	1,722
Madera	3	43	1	50	4	36	4	33	2	44
Marin		19		21	1	13		27	2	13
Mariposa				1	1		1	1		
Mendocino	1	14	4	9	1	17	2	22	1	17
Merced	6	72	6	65	5	55	8	77	6	102
Modoc		1		4		2				
Mono		6	1	8	1	7		3	1	3
Monterey	3	30	1	40	3	47	3	42	7	52
Napa		19		19	1	22		15	2	23
Nevada	1	35	1	21	1	12	1	13		27
Orange	5	336	7	315	12	300	10	369	13	399
Placer	2	46	2	37	1	22		38	2	43
Plumas	1	7		4	1	5		2	1	2
Riverside	23	292	19	305	10	325	19	344	12	403
Sacramento	7	174	4	181	5	186	8	200	7	216
San Benito	1	16	2	10		15	1	8	1	7
San Bernardino	29	438	29	412	26	464	32	525	32	509
San Diego	14	253	10	248	10	240	15	286	13	329
San Francisco	3	54	1	46	6	43	1	56		71
San Joaquin	8	171	9	184	14	185	8	161	8	213
San Luis Obispo	2	27	4	21		24	2	37	2	29
San Mateo	1	56	3	55		64		56	2	76
Santa Barbara	4	34	5	36	1	42	1	52	4	51
Santa Clara	3	95	4	92	4	96	9	110	7	135
Santa Cruz	2	26	1	24		24		27	2	27
Shasta	3	27	2	41	1	24	4	24	5	31
Sierra		2		2	1	1		2		3
Siskiyou	2	10	2	21		17	2	21	1	9
Solano	1	49	2	46	6	49	4	58	2	82
Sonoma		65	2	46	1	63		60	3	63
Stanislaus	2	89	5	95	4	83	8	84	7	119
Sutter		13		14	2	14	1	14	2	24
Tehama	3	13	1	17	2	15	2	6	2	14
Trinity		2		5		2	1	4		2
Tulare	9	92	7	73	10	84	11	73	11	96
Tuolumne	1	7		6		6	1	7		4
Ventura	4	62	5	83	5	73	1	84	7	57
Yolo	3	29	1	33	1	27	4	41	5	43
Yuba	2	15	1	8	1	12		12		14
TOTAL	245	5,155	235	5,092	256	5,209	279	5,476	290	6,038

\*May be under reported for non-CHP agencies due to a traffic collision report form revision July 2003. (See Preface for details.)

TABLE 6D PERSONS KILLED AND INJURED IN TRUCK COLLISIONS BY COUNTY 2011-2015

COUNTY*	2011		2012		2013		2014		2015	
	Killed	Injured	Killed	Injured	Killed	Injured	Killed	Injured	Killed	Injured
Alameda	7	316	3	307	10	335	7	332	7	399
Alpine		2						1		
Amador	3	4		9		2		12	1	4
Butte		22	2	38	3	33		53	3	28
Calaveras		2		7		11	1	10		6
Colusa	1	15	1	18	2	23		15	1	20
Contra Costa		79	4	106	5	96	4	99	4	134
Del Norte	1	1		4	1	2	1	4		8
El Dorado	3	20		11		13		9	2	21
Fresno	11	232	15	197	10	209	13	234	12	217
Glenn	1	4	1	8	1	9	10	49		11
Humboldt	2	23		31	2	21	3	8	1	20
Imperial	1	46	6	53	7	54	9	63	9	63
Inyo		2		3		2		10		3
Kern	24	306	24	288	19	283	17	327	30	401
Kings	1	58	5	62	4	58	5	53	6	71
Lake	1	8	1	13	4	16		11	3	12
Lassen	1	2	3	9		19		11	1	9
Los Angeles	53	2,212	43	2,283	56	2,400	64	2,280	54	2,418
Madera	3	65	3	77	4	64	5	44	2	69
Marin		20		33	1	16		34	2	13
Mariposa				1	1	1	1	3		
Mendocino	1	14	4	11	1	25	2	27	1	19
Merced	6	97	7	102	5	98	8	109	6	134
Modoc		1		4		2				
Mono		7	1	11	1	7		3	1	6
Monterey	3	39	1	62	3	61	4	71	8	76
Napa		23		25	1	28		17	2	26
Nevada	1	46	1	26	1	20	1	18		37
Orange	5	442	8	430	15	420	10	506	13	570
Placer	2	70	2	72	1	34		50	2	69
Plumas	2	14		4	1	6		2	1	2
Riverside	26	411	20	439	11	477	20	488	12	568
Sacramento	7	249	4	278	5	249	8	265	7	321
San Benito	2	29	3	13		27	1	14	1	16
San Bernardino	34	648	31	604	27	707	36	763	34	742
San Diego	16	372	10	345	12	327	15	397	14	453
San Francisco	3	82	1	60	6	59	1	108		110
San Joaquin	9	243	10	285	16	275	8	221	9	288
San Luis Obispo	2	43	4	30		34	5	54	2	36
San Mateo	1	82	3	81		90		75	2	115
Santa Barbara	4	58	5	53	1	56	1	79	4	67
Santa Clara	3	127	4	123	4	128	9	147	7	190
Santa Cruz	3	35	1	33		29		30	2	36
Shasta	3	32	3	49	1	36	4	33	5	39
Sierra		3		3	1	1		3		3
Siskiyou	5	18	2	37		27	2	28	1	12
Solano	1	66	2	55	7	76	4	87	2	106
Sonoma		80	2	69	1	88		73	3	80
Stanislaus	2	139	5	135	6	119	8	120	7	170
Sutter		15		20	2	20	1	24	2	37
Tehama	3	21	1	25	2	22	2	7	2	17
Trinity		2		6		4	1	6		2
Tulare	9	131	8	103	10	122	13	132	14	154
Tuolumne	1	12		7		9	1	11		5
Ventura	4	90	5	127	5	105	1	128	8	77
Yolo	5	49	1	43	1	42	4	56	5	68
Yuba	2	20	1	12	1	14		17		20
TOTAL	278	7,249	261	7,340	278	7,511	310	7,831	315	8,598

\*May be under reported for non-CHP agencies due to a traffic collision report form revision July 2003. (See Preface for details.)

TABLE 6E FATAL COLLISIONS WHERE TRUCK DRIVER WAS AT FAULT BY AGE BY PRIMARY COLLISION FACTOR - 2015

PRIMARY COLLISION FACTOR*	AGE											TOTAL	
	15-19	20-24	25-29	30-34	35-39	40-44	45-49	50-54	55-59	60-64	65 and over		Not Stated
Driving Or Bicycling Under Influence Of Alcohol Or Drug				1					1				2
Impeding Traffic													
Unsafe Speed	1		3	2		4	5	5	3	1	2		26
Following Too Closely				1									1
Wrong Side Of Road		1	3						1		1		6
Improper Passing													
Unsafe Lane Change			1	1									2
Improper Turning		2	4	1	1	1	1	2	4	2	2		20
Automobile Right-Of-Way			1	1			1			2		1	6
Pedestrian Right-Of-Way							1	2					3
Pedestrian Violation													
Traffic Signals And Signs		2	1										3
Unsafe Starting Or Backing								1					1
Other Equipment			1										1
Other Hazardous Violation							1						1
Other Than Driver													
Unknown						2							2
Not Stated													
TOTAL	1	5	14	7	1	7	9	10	9	5	5	1	74

\*May be under reported for non-CHP agencies due to a traffic collision report form revision July 2003. (See Preface for details.)

TABLE 6F INJURY COLLISIONS WHERE TRUCK DRIVER WAS AT FAULT BY AGE BY PRIMARY COLLISION FACTOR - 2015

PRIMARY COLLISION FACTOR*	AGE											TOTAL	
	15-19	20-24	25-29	30-34	35-39	40-44	45-49	50-54	55-59	60-64	65 and over		Not Stated
Driving Or Bicycling Under Influence Of Alcohol Or Drug	1	11	2	7	8	5	4	4	4	3	2		51
Impeding Traffic									1				1
Unsafe Speed	5	102	140	119	117	118	134	152	121	60	33	26	1,127
Following Too Closely	3	4	6	8	3	6	4	5	8	2	2		51
Wrong Side Of Road		7	3	4	5	4	3	6	3	2	1	2	40
Improper Passing					1	4	1	1		2	3	2	14
Unsafe Lane Change	3	12	32	34	33	28	41	48	43	27	9	43	353
Improper Turning	9	49	45	42	44	57	62	77	52	29	20	20	506
Automobile Right-Of-Way	5	21	31	19	28	27	32	34	34	12	17	5	265
Pedestrian Right-Of-Way		3	1	2	2	3	6	5	3	2		3	30
Pedestrian Violation													
Traffic Signals And Signs	2	15	15	8	13	7	8	12	12	10	1	6	109
Unsafe Starting Or Backing		4	7	7	6	12	21	8	8	2	3	4	82
Hazardous Parking										1			1
Brakes						1							1
Other Equipment			1	1	1	2	1	1	2			2	11
Other Hazardous Violation	2	1	2	2	3	2	5	1	2	1	1	4	26
Other Improper Driving			1	2						2			5
Other Than Driver													
Unknown		1	2				3	1	1		1	4	13
Not Stated				1	1			3			1	1	7
TOTAL	30	230	288	256	265	276	325	358	294	155	94	122	2,693

\*May be under reported for non-CHP agencies due to a traffic collision report form revision July 2003. (See Preface for details.)

TABLE 6G PERSONS KILLED IN TRUCK COLLISIONS WHERE TRUCK DRIVER WAS AT FAULT BY PRIMARY COLLISION FACTOR - 2015

PRIMARY COLLISION FACTOR*	AGE											65 and over	Not Stated	TOTAL	
	0-14	15-19	20-24	25-29	30-34	35-39	40-44	45-49	50-54	55-59	60-64				
Driving Or Bicycling Under Influence Of Alcohol Or Drug					1						1				2
Impeding Traffic															
Unsafe Speed	2	3		3	2	2	2	5	3	2		4			28
Following Too Closely					1										1
Wrong Side Of Road					1		2		1	1		1			6
Improper Passing															
Unsafe Lane Change					1						1				2
Improper Turning			3	4	2	2	1	2	1	2	1	2			20
Automobile Right-Of-Way				2	2					1		1			6
Pedestrian Right-Of-Way										1	1	1			3
Traffic Signals And Signs				1		1					1		1		4
Unsafe Starting Or Backing												1			1
Hazardous Parking															
Brakes															
Other Equipment											1				1
Other Hazardous Violation												1			1
Other Improper Driving															
Unknown							1			1					2
Not Stated															
TOTAL	2	3	3	10	10	5	6	7	6	8	5	11	1		77

\*May be under reported for non-CHP agencies due to a traffic collision report form revision July 2003. (See Preface for details.)

TABLE 6H PERSONS INJURED IN TRUCK COLLISIONS WHERE TRUCK DRIVER WAS AT FAULT BY PRIMARY COLLISION FACTOR - 2015

PRIMARY COLLISION FACTOR*	AGE												TOTAL	
	0-14	15-19	20-24	25-29	30-34	35-39	40-44	45-49	50-54	55-59	60-64	65 and over		Not Stated
Driving Or Bicycling Under Influence Of Alcohol Or Drug	5	2	13	9	8	12	6	7	4	4	1	2	3	76
Impeding Traffic	1													1
Unsafe Speed	88	81	148	171	148	148	176	186	162	152	104	124	14	1,702
Following Too Closely	2	1	5	5	7	6	11	6	6	7	7	7		70
Wrong Side Of Road	4	6	9	3	5	5	7	4	4	8	5	5	1	66
Improper Passing	3			2	1	6	2			1	1	1	2	19
Unsafe Lane Change	28	30	56	55	32	38	36	43	53	37	29	32	2	471
Improper Turning	17	36	64	79	67	56	66	62	91	55	38	33	5	669
Automobile Right-Of-Way	30	20	52	53	27	30	24	23	28	34	17	30	2	370
Pedestrian Right-Of-Way	2	5		3	1	1	3	2	3	2	5	6		33
Traffic Signals And Signs	8	9	20	16	14	12	10	16	14	8	12	23		162
Unsafe Starting Or Backing	6	3	10	10	8	11	10	12	7	2	8	10	4	101
Hazardous Parking											1			1
Brakes								1						1
Other Equipment	2			1	3	1	2	3				2		14
Other Hazardous Violation	1	6	1	4	2	3	5	1	3	4	1	2	2	35
Other Improper Driving		1	2							2	2		1	8
Unknown	4	1	1		1		1	4		2	1	1		16
Not Stated		1			1		1	1	1			3		8
TOTAL	201	202	381	411	325	329	360	371	377	318	232	282	34	3,823

\*May be under reported for non-CHP agencies due to a traffic collision report form revision July 2003. (See Preface for details.)



TABLE 61 FATAL AND INJURY TRUCK COLLISIONS WHERE TRUCK DRIVER WAS AT FAULT BY PRIMARY COLLISION FACTOR 2011-2015

PRIMARY COLLISION FACTOR*	2011		2012		2013		2014		2015	
	Fatal	Injury	Fatal	Injury	Fatal	Injury	Fatal	Injury	Fatal	Injury
Driving Or Bicycling Under Influence Of Alcohol Or Drug	1	45	2	44	2	32	4	28	2	51
Impeding Traffic		1		1		1		1		1
Unsafe Speed	20	918	19	888	18	980	22	1,039	26	1,127
Following Too Closely		49	1	58		63		40	1	51
Wrong Side Of Road	1	39	5	39	2	37	1	29	6	40
Improper Passing		12	1	6		9	1	6		14
Unsafe Lane Change	2	318	2	316	1	327	1	346	2	353
Improper Turning	23	411	26	407	27	446	16	453	20	506
Automobile Right-Of-Way	5	219	3	192	8	200	8	216	6	265
Pedestrian Right-Of-Way	4	23	5	25	3	31	3	28	3	30
Pedestrian Violation		2		1		2		3		
Traffic Signals And Signs		81	8	86	7	82	7	113	3	109
Unsafe Starting Or Backing		78		78	2	81	3	82	1	82
Hazardous Parking		3		1		9		7		1
Lights								1		
Brakes		1		1		1				1
Other Equipment		4	1	15		15	4	14	1	11
Other Hazardous Violation	1	22		32		21		29	1	26
Other Improper Driving		3	1	7		5		7		5
Unknown		1		1		1		3	2	13
Not Stated		27	1	13		17		28		7
TOTAL	57	2,257	75	2,211	70	2,360	70	2,473	74	2,693

\*May be under reported for non-CHP agencies due to a traffic collision report form revision July 2003. (See Preface for details.)

TABLE 6J FATAL AND INJURY TRUCK COLLISIONS COMPARED TO ALL FATAL AND INJURY COLLISIONS 2011-2015

	2011	2012	2013	2014	2015
<b>COLLISIONS*</b>					
Total fatal collisions	2,628	2,758	2,853	2,882	3,168
Fatal truck collisions	245	235	256	279	290
Percent of total	9.3	8.5	9.0	9.7	9.2
Total injury collisions	159,115	159,696	156,909	162,742	178,669
Injury truck collisions	5,155	5,092	5,209	5,476	6,038
Percent of total	3.2	3.2	3.3	3.4	3.4

\*May be under reported for non-CHP agencies due to a traffic collision report form revision July 2003. (See Preface for details.)

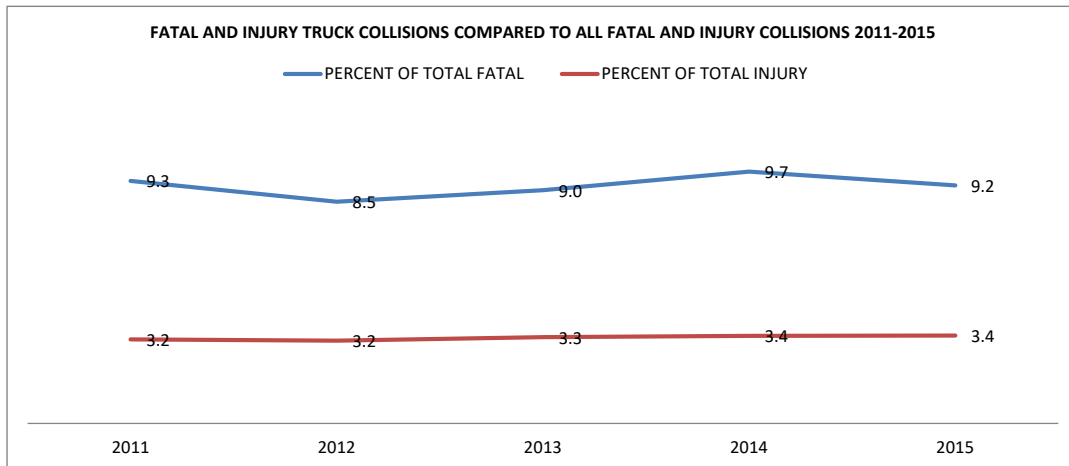


TABLE 6K TRUCK DRIVERS IN FATAL COLLISIONS BY AGE BY MOVEMENT PRECEDING COLLISION - 2015

MOVEMENT PRECEDING COLLISION*	AGE												TOTAL	
	0-14	15-19	20-24	25-29	30-34	35-39	40-44	45-49	50-54	55-59	60-64	65 and over		Not Stated
Stopped				2		3	2	2	2	1		1		13
Proceeding straight	1		7	12	19	15	27	31	34	26	11	8	5	196
Ran off road							1			2	1	1		5
Making right turn								2	2			1		5
Making left turn		1		3	1	4	3	3	2	2	2			21
Making U turn													1	1
Backing					1				1					2
Slowing/stopping			1			1		1	3	1	2	1		10
Changing lanes				1	1				1	1		1		5
Entering traffic			1					1	1	1				4
Other unsafe turning									1	2				3
Crossed into opposing lane				3								1		4
Parked									1					1
Other			2	4	2	1		1	1	1		1		13
Not stated							1							1
TOTAL	1	1	11	25	24	24	34	41	49	37	16	15	6	284

\*May be under reported for non-CHP agencies due to a traffic collision report form revision July 2003. (See Preface for details.)

TABLE 6L TRUCK DRIVERS IN INJURY COLLISIONS BY AGE BY MOVEMENT PRECEDING COLLISION - 2015

MOVEMENT PRECEDING COLLISION*	AGE												TOTAL	
	0-14	15-19	20-24	25-29	30-34	35-39	40-44	45-49	50-54	55-59	60-64	65 and over		Not Stated
Stopped		1	20	31	46	60	69	87	71	48	31	15	10	489
Proceeding straight	2	18	212	325	328	382	423	520	518	408	247	137	112	3,632
Ran off road		3	10	14	12	12	16	11	17	18	10	5	2	130
Making right turn		4	10	19	21	21	26	41	38	33	15	10	14	252
Making left turn		5	33	31	39	38	51	59	47	47	19	13	9	391
Making U turn		1	2	7	3	5	6	2	5	4	4	2	1	42
Backing			5	6	3	5	9	12	6	6	7	3	3	65
Slowing/stopping		3	11	19	24	19	32	40	28	29	15	6	8	234
Passing other vehicle				1	3	1	3	1	2	3	2	1	3	20
Changing lanes		3	13	35	35	40	38	43	53	49	35	10	45	399
Parking maneuver					1		1	1	1		1			5
Entering traffic			8	6	5	9	2	14	9	5		2	1	61
Other unsafe turning		3	9	7	7	8	8	8	10	12	3	1	3	79
Crossed into opposing lane			3	1	1	5		3	5		2	1	3	24
Parked <sup>1/</sup>			2		2	4	1	1	3				1	14
Merging			1		3	3	2	1	2	3	2	2	1	20
Traveling wrong way				1						1			1	3
Other		1	18	15	15	13	24	21	33	17	12	9	4	182
Not stated			1	1	2	2	3	2	9	3	2		9	34
TOTAL	2	42	358	519	550	627	714	867	857	686	407	217	230	6,076

\*May be under reported for non-CHP agencies due to a traffic collision report form revision July 2003. (See Preface for details.)

<sup>1/</sup> Anomalies are due to re-engineering of SWITRS beginning with 2002 data.