

## Have a Local Area Contingency Plan

### Alternate Route

Know at least two alternate ways to get home.

### Emergency Facility

Know the location of the nearest hospital.

Know the address of a friend near work who would be willing to put you up for the night.

Know how to get there on foot if necessary.

### Emergency Telephone Numbers

Fire: 911 or \_\_\_\_\_

Medical: 911 or \_\_\_\_\_

CHP: 911 or \_\_\_\_\_

Other important numbers:

---

---

---

---

---

---

### California Highway Patrol

State Security Division,  
Emergency Operations and Safety Services Section

601 N. 7th Street  
Sacramento, CA 95811  
Phone: (916) 843-3240  
Fax: (916) 843-3236

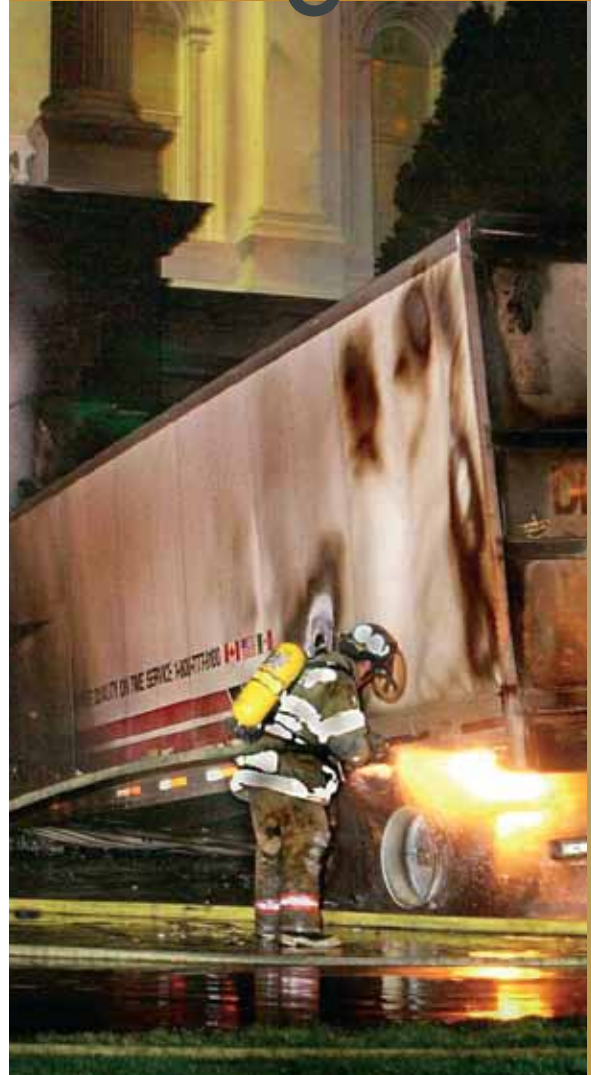


CHP 1015 (8/10) OPI 082

California Highway Patrol  
Graphic Services Unit

Don't Be a VICTIM!  
Be Prepared!

# Workplace Emergencies



California Highway Patrol

Safety  
Services  
Program

