

CHAPTER 1
LAW ENFORCEMENT MUTUAL AID
REVISED NOVEMBER 2014
TABLE OF CONTENTS

<u>GENERAL</u>	1-3
Purpose	1-3
Mutual Aid Concept	1-3
Procedures for Obtaining Mutual Aid	1-4
Authority for Providing Assistance	1-4
<u>POLICY</u>	1-5
Approval to Commit Resources	1-5
Development of Plans	1-5
Mutual Aid Policy	1-5
California Custodial Facilities	1-5
State or Federal Custodial Facilities	1-6
Command and Control	1-6
<u>DEPARTMENTAL ACTION</u>	1-6
Officer Needs Assistance	1-6
Emergency Traffic Assistance	1-7
Mutual Aid Support	1-7
Proclaimed Emergencies	1-8
<u>SEARCH AND RESCUE</u>	1-8
California Highway Patrol Request for Search and Rescue Assistance	1-8
California Highway Patrol as a Search and Rescue Resource	1-8
<u>LAW ENFORCEMENT AGENCY JOB ACTIONS</u>	1-8
General	1-8
Policy	1-9
Procedures	1-9
<u>ASSISTANCE ON FEDERAL LANDS</u>	1-12
General	1-12
National Parks-Mutual Aid	1-12
<u>GOVERNOR'S OFFICE OF EMERGENCY SERVICES RESOURCES</u>	1-13
Mobile Communications Support Vans	1-13
<u>MUTUAL AID LAWS AND AUTHORITIES</u>	1-14
Government Code Sections: Emergency Management/Mutual Aid	1-14
Penal Code Sections: Crowds/Disturbances	1-15

ANNEXES

A – SUMMARY OF DEPARTMENTAL ASSISTANCE 1-19

B – CALIFORNIA GOVERNOR’S OFFICE OF EMERGENCY SERVICES LAW
ENFORCEMENT MUTUAL AID REGIONS 1-21

C – CALIFORNIA GOVERNOR’S OFFICE OF EMERGENCY SERVICES
ADMINISTRATIVE REGIONS 1-23

D – LAW ENFORCEMENT MUTUAL AID ACTIVATION CHANNELS..... 1-25

CHAPTER 1

LAW ENFORCEMENT MUTUAL AID

1. GENERAL.

a. Purpose. The purpose of law enforcement mutual aid is to ensure effective mitigation of emergencies throughout California or adjacent states. The California Highway Patrol (CHP) is prepared to provide mutual aid to law enforcement agencies of political subdivisions, other states, and the federal government.

(1) Departmental aid to law enforcement agencies within the state may include temporary emergency assistance, supporting and upholding the agencies during mutual aid operations, or as the result of a police labor controversy. No matter what level of assistance the Department provides under mutual aid guidelines, the CHP will adhere to Incident Command System protocol as required by law and outlined in Highway Patrol Manual 50.1, Emergency Incident Management Planning and Operations Manual.

(2) Chapter 2, Response to Request for Supplemental Law Enforcement Assistance, provides policy and procedures regarding limited-term supplemental law enforcement assistance.

b. Mutual Aid Concept. Mutual aid is a planned cooperative effort between city, county, and state emergency response agencies to ensure consistent and efficient emergency services to each other in extraordinary situations. The organizational framework for mutual aid within the state is based on four levels of increasing responsibility and activation (Annex A). The four levels from smallest to largest are: local (cities), operational areas (counties), regional (two or more counties), and state. Since the CHP maintains Area offices throughout the state, the CHP is prepared to provide mutual aid to all local and operational areas. Except for "officer needs assistance" and "emergency traffic assistance" mutual aid, the CHP will not normally dedicate departmental resources directly to city requests prior to the reasonable commitment of available county resources.

c. The basic policy of California's Law Enforcement Mutual Aid Plan is to provide state resources to local government during civil disorders and unusual occurrences after local and adjacent government aid has been reasonably committed, or when the magnitude of the emergency is such that it would be in the best interest of the state to commit CHP resources prior to the commitment of local agency resources.

d. Procedures for Obtaining Mutual Aid.

(1) Local Government. When a chief of police determines that an emergency situation in their jurisdiction may become or is already beyond the control of their department's resources, it is their responsibility to request mutual aid from the operational area coordinator (county sheriff).

(2) Operational Area. When an active or anticipated emergency cannot be resolved by a single law enforcement agency within an operational area, it is the responsibility of the operational area coordinator to provide assistance and coordination of resources to control the problem (Section 26602 of the Government Code [GC]). Each county is an operational area and the county sheriff is the operational area coordinator. If it appears likely that operational area resources may be depleted, the regional coordinator should be advised.

(3) Regional. Should an existing or anticipated emergency be of such magnitude as to require the commitment of the resources of one or more operational areas, it is the responsibility of the regional coordinator to organize the response of resources within the region. The California Governor's Office of Emergency Services (Cal OES) divides the state into seven law enforcement mutual aid regions (Annex B). The regional coordinator will keep the Cal OES state law enforcement coordinator advised. Annex C depicts Cal OES administrative regions and the six standard mutual aid regions.

(4) State. If the combined resources of a law enforcement mutual aid region do not appear to be sufficient to cope with an emergency situation, the regional coordinator will request additional assistance through the state law enforcement mutual aid coordinator, Cal OES Law Enforcement Division.

e. Authority for Providing Assistance. Authority for the CHP to provide the various types of assistance and support described in this chapter is contained in the California Penal Code, Governor's Executive Orders, California Emergency Services Act, the Master Mutual Aid Agreement, and the Law Enforcement Mutual Aid Plan.

f. Following the April 1992 civil unrest in Los Angeles, Cal OES, in consultation with the regional law enforcement mutual aid coordinators (sheriffs), developed an interim operational checklist for civil unrest situations. The key aspects of the checklist were determined to be consistent with the Law Enforcement Mutual Aid Plan. Key aspects are as follows:

(1) Initial response must be both rapid and coordinated.

(2) Information must be shared at the onset and continually during an incident.

- (3) The mutual aid system is effective when utilized properly.
- (4) Mutual aid should be requested early in an incident rather than after local resources are overwhelmed.
- (5) The CHP can be utilized at any response level and may be used to assist local law enforcement for firefighter protection, or other appropriate missions, even prior to a request for other mutual aid.
- (6) Coordinated mobilization should include well managed staging and resource assignment functions.

2. POLICY.

- a. Approval to Commit Resources. Approval of the Commissioner or their designee is required before committing CHP resources in response to a request for mutual aid.
- b. Development of Plans. Field commanders shall develop and coordinate plans to provide departmental assistance to local authorities within their geographical areas of responsibility. Field commanders shall ensure all uniformed personnel, particularly sergeants and officers-in-charge (OIC), are familiar with departmental assistance procedures contained in this chapter.
- c. Mutual Aid Policy. Departmental support of mutual aid operations will be provided after local and adjacent governmental resources within the operational area have been reasonably committed or whenever determined by the Governor that prior commitment is in the best interest of the state. A summary of departmental assistance procedures is depicted in Annex D. Supervisory and management personnel should be familiar with mutual aid request procedures.
- d. California Custodial Facilities. Requests for "mutual aid support" at local jurisdiction (city or county) custodial facilities will be handled the same as any other mutual aid request. All requests for unarmed assistance will be declined. Normally, city and county resources must be reasonably committed prior to deployment of CHP personnel. Commanders shall maintain an ongoing interaction with the superintendents of correctional institutions within their Area.
 - (1) Missions within the confines of custodial facilities shall be limited to the prevention of death or injury to any person, including inmates or wards, as deemed appropriate and necessary by the ranking CHP officer at the scene.
 - (2) The Department will also respond to officer needs assistance (11-99 or

999) type requests whenever the lives or safety of any custodial personnel are in immediate jeopardy, regardless of the peace officer status of the person needing assistance.

e. State or Federal Custodial Facilities. Requests for mutual aid support at state or federal custodial facilities will be handled the same as any other mutual aid request or request for assistance (refer to paragraph 3).

f. Command and Control. Departmental personnel committed to the support of local authorities shall remain under the command and control of the CHP. All CHP policies and procedures, including the policy on carrying and using firearms, will remain in effect. Commanders and designated supervisors may accept missions from the responsible local authorities. Local authorities have available, in an annex to the California Law Enforcement Mutual Aid Plan, a statement and explanation of departmental policy in response to mutual aid requests.

3. DEPARTMENTAL ACTION.

a. Officer Needs Assistance. Uniformed personnel shall respond to officer needs assistance requests. The degree of response must be based on the decision of the on-duty supervisor who is authorized to commit the personnel and resources necessary to meet the particular situation. However, any deployment action must be counterbalanced by the need to continue other essential services throughout the Area. Commanders shall develop standard operating procedures to help field supervisors provide CHP assistance that is timely, sufficient, and reasonable in accordance with the circumstances. Procedures should:

- (1) Require the senior on-duty field supervisor in the affected Area to proceed to the scene to assess the situation and direct involved units.
- (2) Establish guidelines on the number of units responding, reasonable response distances, and the duration of assistance.
- (3) Specify individuals authorized to direct and coordinate the responding units.
- (4) Provide directions to control dispatchers' actions (broadcasting to specific units is preferred to blanket announcements).
- (5) Establish radio procedures to minimize delays.
- (6) Consider routes of travel that will minimize exposure to hazards.

(7) If mutual aid is formally initiated, procedures in paragraph 1.d. of this chapter will apply. Officers at the scene may assist until mutual aid forces arrive.

b. Emergency Traffic Assistance. The senior ranking officer on duty shall: deploy personnel, notify the Area commander through channels, proceed to the scene; assess the situation, and direct departmental involvement until relieved by a CHP officer of higher rank. Response of the affected Area personnel will be determined by the senior ranking officer until he/she is relieved. Commitment of personnel and resources should be sufficient to meet the emergency while assuring continuation of other essential services. The response procedures and guidelines which field commands will establish for officer needs assistance situations should also be usable in most "emergency traffic assistance" circumstances. The Division chief shall be notified and may, if necessary, deploy personnel from adjacent Areas within the Division.

c. Mutual Aid Support. Upon receipt of a request from the regional or operational area coordinator, or designee to provide mutual aid support, the appropriate commander shall be notified. Commanders shall request, through channels, approval of the Commissioner to commit departmental mutual aid resources.

(1) Area commanders may authorize mobilization of as many of their personnel as deemed necessary for the situation prior to the receipt of approval to commit resources.

(2) Prior to receiving approval to commit resources, Division chiefs may authorize mobilization of as many personnel within the affected Area or adjacent Areas as they determine are needed.

(3) The Commissioner; Deputy Commissioner; Assistant Commissioner, Field; or Assistant Commissioner, Staff; will evaluate mutual aid incidents and consider both legal authority and state policy regarding commitment of departmental resources. Information will be communicated through channels when commitment is authorized and will include limitations on the size and type of support to be provided.

d. Proclaimed Emergencies. During a proclaimed state of emergency or state of war emergency, departmental actions will be in accordance with established plans for the type of incident, or as directed by the Governor.

4. SEARCH AND RESCUE.

a. California Highway Patrol Request for Search and Rescue Assistance. The increased use of California's remote areas by the public has created a greater need for Search and Rescue (SAR) resources. Since all levels of government are becoming active in this area, it follows that the Department must be prepared to request or respond to this type of assistance should the need arise. Although it is the operational area coordinator of each county who is assigned that jurisdiction's SAR responsibilities, CHP personnel may be the first to respond to SAR incidents, particularly those necessitating a rescue such as vehicle collisions in remote areas. The California Governor's Office of Emergency Services Law Enforcement Division is responsible for coordinating state mutual aid for search and rescue in California. In addition, Cal OES receives and coordinates interstate requests under the auspices of the National Search and Rescue Plan. When CHP personnel determine SAR resources are required for an incident, the appropriate jurisdiction will be notified.

b. California Highway Patrol as a Search and Rescue Resource. Search and rescue response is difficult to define since each demand for service is unique and frequently requires immediate action by the nearest available response organization (generally a law enforcement agency). Although the Department holds a primarily supportive role in SAR, it has in the past and will in the future be called upon by the public and local authorities to assist in such incidents. Due to the urgency of most SAR situations, the Department must be prepared to respond quickly and render all possible assistance to local authorities, especially in incidents such as lost children, missing, or overdue hikers, etc. Search and rescue requests requiring a significant amount or prolonged use of CHP personnel or resources for an off-highway search should follow procedures established by law in the California Law Enforcement Mutual Aid Plan. Requests by an operational area coordinator, through proper mutual aid channels, would obligate the Department to provide available assistance.

5. LAW ENFORCEMENT AGENCY JOB ACTIONS.

a. General. Law enforcement employee labor organizations use various types of job actions, including strikes and sick-outs, to resolve labor controversies with their respective governing bodies. Since strikes and sick-outs reduce the availability of local law enforcement, the Department may be asked to provide police services to a local jurisdiction experiencing a job action. Case law currently excludes police strikes from the definition of a labor controversy. The Attorney General's office indicates that any departmental assistance or service rendered during a police strike would constitute mutual aid.

b. Policy.

(1) Division chiefs and Area commanders should report, through channels, to the Office of the Commissioner on potential law enforcement agency job actions within their jurisdiction.

(2) Departmental personnel shall not provide service or assistance to a city or county law enforcement agency involved in a job action unless authorized. This authorization may only be granted by the Commissioner; Deputy Commissioner; Assistant Commissioner, Field; or Assistant Commissioner, Staff.

(3) This policy shall not preclude CHP response to officer needs assistance, emergency traffic assistance incidents, or other immediate life threatening situations.

(4) Departmental assistance provided as a result of a law enforcement agency job action will be in accordance with existing mutual aid policy. Political subdivisions will not be billed for such services.

c. Procedures.

(1) Requests for California Highway Patrol Assistance.

(a) The chief administrator or chief law enforcement official of the city or county affected by a law enforcement job action may make a request for CHP assistance to the Area commander or Division chief.

(b) Field commands receiving a request will immediately notify the next level of command, providing as much information as possible. Divisions will ensure the Assistant Commissioner, Field, and the Office of Employee Relations are notified.

(c) Since the Department could become involved in general law enforcement assistance, Area commanders might find it advantageous to survey and maintain a list of personnel who have special training or skills (e.g., major crime scene investigation, fingerprinting, search warrants). Division Vehicle Theft and Multidisciplinary Accident Investigation Team (MAIT) investigators are excellent resources that can be utilized for complex crime scene investigations, scale diagrams, training, or advisory purposes.

(2) Incorporated Areas.

(a) Non-Traffic Matters.

1 The sheriff is an officer of the county whose jurisdiction extends to all areas of the county, including cities. The sheriff is charged with the responsibility of keeping the peace and apprehending persons charged with crimes. Therefore, the sheriff is the primary back-up law enforcement agency for any city whose police department is involved in a job action. If the sheriff is unable to fill in for police department personnel, then the CHP may be called upon to augment law enforcement in the affected community.

2 The Department will respond only after supervisory and administrative personnel of the affected law enforcement agency are committed to the fullest extent practical in the given situation.

3 California Highway Patrol response will be limited to life-saving or property-protection situations.

4 California Highway Patrol personnel will secure a major crime scene to facilitate the follow-up investigation. Also, CHP officers will obtain basic information which will include, but not be limited to, victim/suspect/witness identifications, statements, preliminary diagrams, etc. This information will be turned over to the law enforcement agency (police or sheriff) conducting the follow-up investigation.

5 Exceptions to the preceding paragraph are those situations involving a physical arrest. In such instances, CHP personnel will obtain all information necessary to support the arrest. Unless the affected law enforcement agency requests a different procedure, the CHP officer will complete the incarceration of the arrested party. Any follow-up investigation will be the responsibility of the appropriate law enforcement agency.

(b) Traffic Collisions.

1 The Department will respond to traffic collisions within a city only:

a Upon request of the affected police department or in the case of contract cities, the sheriff's office, and;

b After supervisory and administrative personnel of the police department or in the case of contract cities, the sheriff's department, are fully committed.

2 California Highway Patrol response will normally be limited to fatal, injury, driving under the influence, or major property damage collisions involving highway blockage or heavy congestion.

3 California Highway Patrol personnel will make a preliminary investigation at the scene which will include, but not be limited to, driver/victim/witness identification, statements, and diagrams. The information will be turned over to the appropriate law enforcement agency for further action.

4 Situations involving a physical arrest will be an exception to the preceding paragraph. In such instances, CHP personnel will obtain all information necessary to support the arrest. Unless the affected law enforcement agency requests a different procedure, the CHP officer will complete the incarceration of the arrested party. Any follow-up will be the responsibility of the appropriate law enforcement agency.

(3) Unincorporated Areas.

(a) Non-Traffic Matters.

1 In the absence of local contractual agreements between a county sheriff and city police departments within that county, there are no clearly established provisions for cities to provide assistance during an agency job action affecting the county sheriff. Therefore, a job action involving a sheriff's department may result in a request for CHP assistance.

2 The Department will respond only after supervisory and administrative personnel of the affected sheriff's department are fully committed.

3 California Highway Patrol response will be limited to life-saving and property-protection situations.

4 California Highway Patrol personnel will secure a major crime scene to facilitate the follow-up investigation. Basic information obtained by CHP personnel will include, but not be limited to, victim/suspect/witness identification, statements, preliminary diagrams, etc. This information will be turned over to the sheriff's department investigators.

5 Situations involving a physical arrest are an exception to the preceding paragraph. In such instances, CHP personnel will obtain all

information necessary to support the arrest. Unless the affected sheriff's office requests a different procedure, CHP officers will complete the incarceration of the arrested party. Any follow-up investigation will be the responsibility of the sheriff's department.

(b) Traffic Collisions. Since the Department handles all traffic collisions occurring in the unincorporated areas, response will be in accordance with established CHP procedures.

6. ASSISTANCE ON FEDERAL LANDS.

a. General. Departmental aid to law enforcement agencies on federal lands shall be limited to the types of assistance listed in paragraph 3.a.(1), of this chapter. Chapter 6, Departmental Responsibility on Federal Lands, of this manual, contains the general policy and procedures relative to determining CHP authority on federal lands.

b. National Parks-Mutual Aid.

(1) In most cases, national parks are exclusive jurisdiction enclaves. Local or state law enforcement personnel are prohibited from assisting in mutual aid situations because of a complete lack of authority. Until a system has been developed to provide CHP personnel with proper authority in national parks, the Department will continue its no assistance position in national parks held under exclusive jurisdiction.

(2) Commanders should refer all requests for mutual aid from the National Park Service or other exclusive jurisdictions to the Cal OES Law Enforcement Branch. Commanders shall then notify, through channels, the Assistant Commissioner, Field, regarding the request.

7. CALIFORNIA GOVERNOR'S OFFICE OF EMERGENCY SERVICES RESOURCES. Following is a list of the resources available from the Cal OES Law Enforcement Branch:

a. Mobile Communications Support Vans. California Governor's Office of Emergency Services maintains four Mobile Communications Support Vans. The vans are stationed out of Alameda, Shasta, Fresno, and Stanislaus counties.

(1) The vans are designed to be used as mobile emergency communications centers and can be obtained for law enforcement use during emergency conditions by contacting the maintaining agency.

(2) Each van is equipped with radio communications on these statewide systems:

- (a) California Highway Patrol (Blue).
- (b) California Law Enforcement Mutual Aid Radio System (CLEMARS).
- (c) Fire Mutual Aid Radio System (FIREMARS).
- (d) California Emergency Services Radio System (CESRS).
- (e) California Law Enforcement Radio System (CLERS).
- (f) California On-Scene Coordination (CalCord).

(3) The units are equipped to cover the entire frequency spectrum including VHF, UHF, and 800 megahertz system. In addition, the vans have the capability to:

- (a) Operate from self-contained power units or commercial power when available.
- (b) Connect telephones carried in the units to land wire facilities.
- (c) Monitor media television broadcasts and AM radio.
- (d) Activate an external public address system mounted on the roof.

b. Communication equipment available for loan from Cal OES.

- (1) Portable base stations.
- (2) Hand-held two-way radios and batteries.

8. MUTUAL AID LAWS AND AUTHORITIES. (All sections have been edited and paraphrased for reference.)

a. Government Code Sections: Emergency Management/Mutual Aid.

(1) 8617 GC. Political subdivisions have the authority to execute agreements for local mutual aid.

(2) 8618 GC. Responsible local officials in whose jurisdiction an incident has occurred shall remain in charge at the incident, including the direction of personnel and equipment provided him/her through mutual aid.

(3) 8630 GC. A local emergency may only be proclaimed by the governing body of a city, or by an official designated by ordinance.

(4) 8634 GC. During a declared local emergency, the governing body or designated officials thereof, may promulgate orders and regulations necessary to provide for protection of life and property, including orders imposing a curfew within designated boundaries. Such orders shall be in writing and shall be given widespread publicity and notice.

(5) 8655 GC. The city shall not be liable for any claim based upon the exercise or performance, or failure to exercise or perform, a discretionary function or duty on the part of the local agency, or any employee in carrying out the provisions of this chapter.

(6) 8658 GC. In any case where an emergency endangering the lives of inmates of the city jail has occurred or is imminent, the person in charge may remove them. If it is not possible to hold them in a safe place of confinement, he/she may release them. Such person shall not be held liable.

(7) 26602 GC. The sheriff shall prevent and suppress any affrays, breaches of the peace, riots, and insurrections which come to their knowledge and investigate public offenses which have been committed.

(8) 41601 GC. For the suppression of riot, public tumult, disturbance of the peace, or resistance against the laws or public authorities in the lawful exercise of their functions, the chief of police has the powers conferred upon sheriffs by general law and in all respects is entitled to the same protection.

b. Penal Code Sections: Crowds/Disturbances.

(1) 102 Penal Code (PC). It is illegal to willfully injure or destroy, or take or attempt to take, or assist any person in taking or attempting to take, from the custody of any officer or person, any personal property which such officer or person has in charge under any process of law.

(2) 148 PC. It is illegal to willfully resist, delay, or obstruct any public officer in the discharge or attempt to discharge any duty of their office.

(3) 148.9 PC. Any person who willfully and unlawfully falsely represents and identifies themselves as another person or as a fictitious person to a police officer, upon lawful detention and arrest to evade the process of the court and to evade proper identification.

(4) 370 PC. It is illegal to willfully and unlawfully obstruct the free passage and use of a public park, square, street or highway.

(5) 402 PC. Prohibits going to the scene of a disaster, or stopping at the scene of a disaster, for the purpose of viewing the scene or the activities of policemen, firemen, or other emergency personnel, or military personnel coping with the disaster in the course of their duties, unless it is part of the duties of such person's employment to view such scene or activities.

(6) 404a PC. Any use of force or violence, disturbing the public peace, or any threat to use such force or violence, if accompanied by immediate power of execution, by two or more persons, acting together, and without authority of law, is a riot.

(7) 404.6 PC. It is illegal to willfully and unlawfully act and engage in conduct urging a riot, and to commit acts of violence and destroy property at a time and place and under circumstances which produce a clear and present danger of acts of force or violence and the burning and destroying of property.

(8) 405a PC. It is illegal to take by means of a riot any person from the lawful custody of any peace officer.

(9) 406 PC. Whenever two or more persons, assembled and acting together, make any attempt or advance toward the commission of an act which would be a riot if actually committed, such assembly is a rout.

(10) 407 PC. Whenever two or more persons assemble together to do an unlawful act, and separate without doing or advancing toward it, or do a lawful act in a violent, boisterous or tumultuous manner, such assembly is an unlawful assembly.

(11) 409 PC. Every person remaining present at the place of any riot, rout, or unlawful assembly, after same has been lawfully warned to disperse, except public officers and those assisting them, is guilty of a misdemeanor.

(12) 415 PC. Applies to the following as peace disturbances:

(a) Any person who unlawfully fights in a public place or challenges another person in a public place to fight.

(b) Any person who maliciously and willfully disturbs another person by loud and unreasonable noise.

(c) Any person who uses offensive words in a public place which are likely to provide an immediate violent reaction.

(13) 418 PC. Every person using or procuring, encouraging or assisting another to use any force or violence in entering upon or detaining any lands or other possessions of another, except in cases allowed by law is guilty of a misdemeanor.

(14) 647c PC. Applies to anyone who accosts other persons in any public place or in any place open to the public for the purpose of begging or soliciting handouts.

(15) 697 PC. Public offenses may be prevented by the intervention of the officers of justice.

(a) By requiring security to keep the peace;

(b) By forming a police in cities and towns, and by requiring their attendance in exposed places;

(c) By suppressing riots.

(16) 726 PC. Where any number of persons, whether armed or not, are unlawfully or riotously assembled, the sheriff of the county and his/her deputies, the officials governing the town or city, or the judges of the justice courts and constables thereof, or any of them, must go among the persons assembled, or as near to them as possible, and command them, in the name of the people of the state, immediately to disperse.

(17) 727 PC. If the persons assembled do not immediately disperse, officers may command the aid of all persons.

ANNEX A

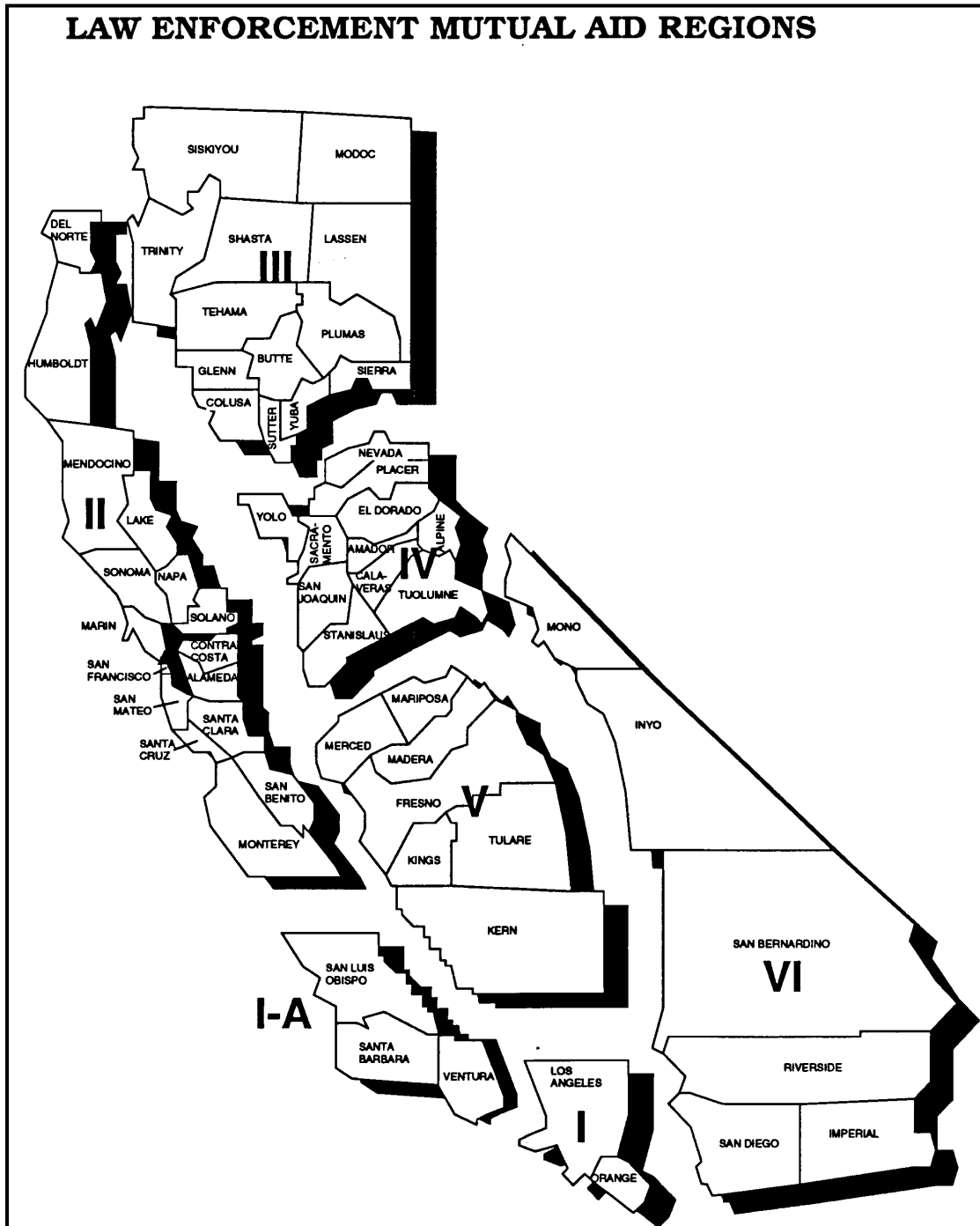
SUMMARY OF DEPARTMENTAL ASSISTANCE

CALIFORNIA HIGHWAY PATROL Summary of Departmental Assistance					
Request	Action	Application			
		Incorporated	Unincorporated	On-Highway*	Off-Highway*
<p>11-99 or 999</p> <p>1. Accepted by any member or employee.</p>	<p>1. Members shall respond.</p> <p>2. Response coordinated per Area SOP.</p> <p>3. Personnel necessary to meet emergency may be deployed.</p> <p>4. Supervisor commands CHP personnel at scene.</p>	Applies	Applies	Applies	Applies
<p>Emergency Traffic Assistance</p> <p>1. Acted upon by the senior ranking officer.</p>	<p>1. Supervisor notifies commander through channels.</p> <p>2. May deploy personnel necessary to meet the emergency.</p> <p>3. Supervisor commands CHP personnel at scene until relieved.</p> <p>4. Division may deploy personnel of adjacent Area.</p>	Applies	Applies	Applies	Applies
<p>Mutual Aid Support</p> <p>1. Received only from operational area coordinator (sheriff).</p> <p>2. Accepted by personnel designated in Division and Area plans.</p>	<p>1. Headquarters approval requested through channels.</p> <p>2. Area commander may mobilize personnel in Area prior to approval.</p> <p>3. Division commander may mobilize personnel in Area and adjacent Areas prior to approval.</p> <p>4. Headquarters authorizes response.</p>	Approved by HQ	Approved by HQ	Approved by HQ	Approved by HQ
<p>Proclaimed Emergencies</p> <p>1. State of emergency or state of war emergency - no local request to the Department.</p>	<p>1. State of emergency or state of war emergency as established in plans or directed by headquarters.</p> <p>NOTE: Local emergency - same as mutual aid.</p>	HQ Directed	As Planned	As Planned	As Planned
<p>*Highway - VC Definition</p> <p>NOTE: Interstate law enforcement assistance is provided pursuant to the provisions of an interstate mutual aid agreement.</p>					

THIS PAGE INTENTIONALLY LEFT BLANK

ANNEX B

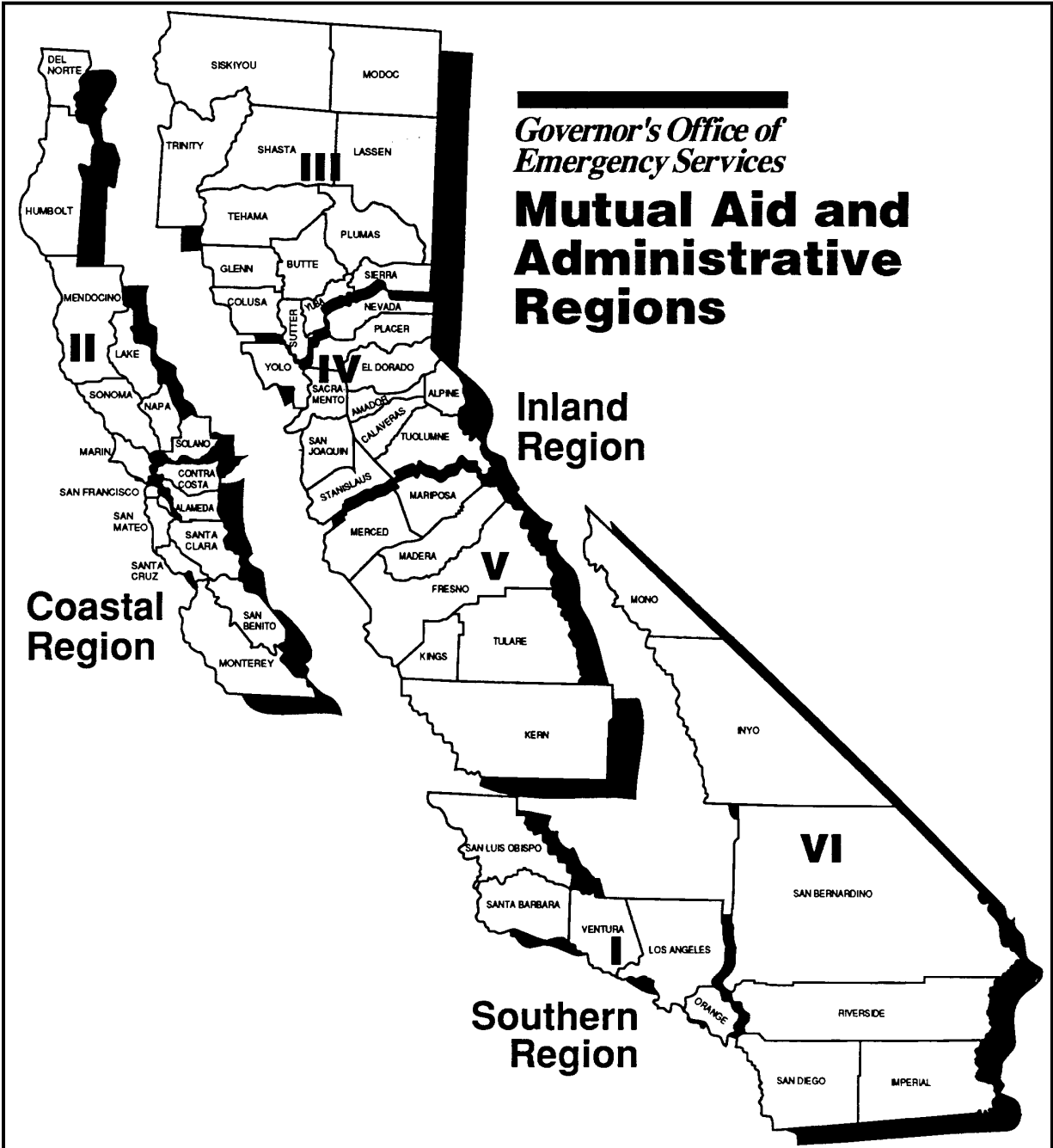
CALIFORNIA GOVERNOR'S OFFICE OF EMERGENCY SERVICES
LAW ENFORCEMENT MUTUAL AID REGIONS



THIS PAGE INTENTIONALLY LEFT BLANK

ANNEX C

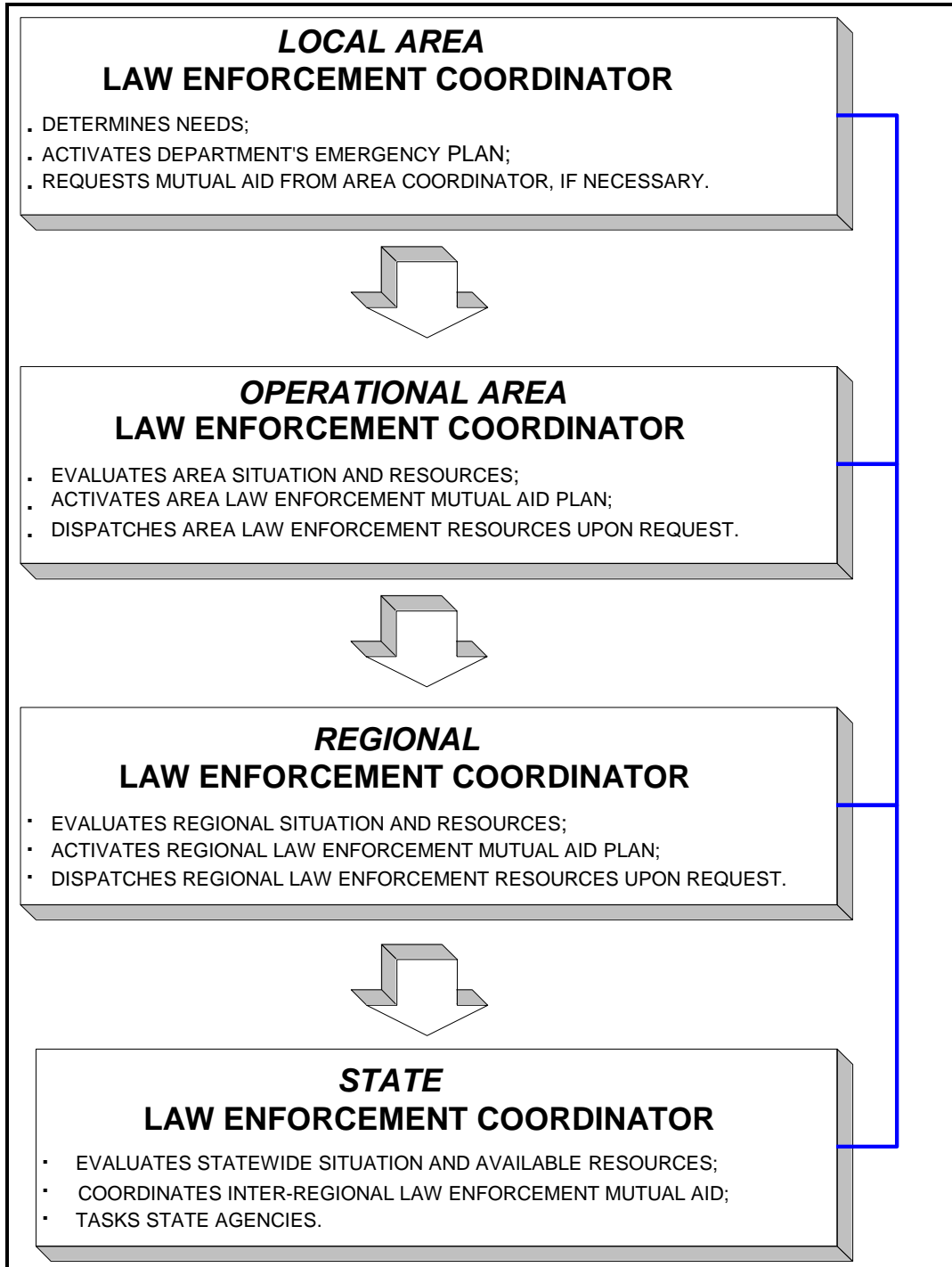
CALIFORNIA GOVERNOR'S OFFICE OF EMERGENCY SERVICES
ADMINISTRATIVE REGIONS



THIS PAGE INTENTIONALLY LEFT BLANK

ANNEX D

LAW ENFORCEMENT MUTUAL AID ACTIVATION CHANNELS



THIS PAGE INTENTIONALLY LEFT BLANK