

INFORMATION BULLETIN



February 8, 2023

IMPLEMENTS OF HUSBANDRY AND FARM VEHICLES

This Information Bulletin (IB) provides information regarding the registration or identification, and driver license (DL) requirements related to implements of husbandry (IOH) and farm vehicles (FV).

Implements of husbandry and FVs are vehicles used in the conduct of agricultural operations in the production of agricultural products. An agricultural operation is any branch of farming carried out by a farmer. The business of a farmer is the production and harvesting of agricultural products. A farming operation is defined in Black's Law Dictionary (Ninth Edition) as "...farming, tillage of the soil, dairy farming, ranching, raising of crops, poultry or livestock, and production of poultry or livestock products in an unmanufactured state."

Agricultural products include all things produced (grown or raised) on a farm in their natural, nonmanufactured condition. This includes grain, vegetables, fruit, Christmas trees, plants grown in a nursery (not just cared for), livestock, poultry, manure (as a by-product of a livestock or poultry farming operation), etc. In addition, the California Food and Agriculture Code (CFAC) states that "agricultural or farm products include any horticultural product" per Section 5010 CFAC. The CFAC further states that "horticultural product" means those products "...grown under cover or outdoors, including bulbs, flowers, shrubbery, florist greens, fruit stocks, floral products, nursery stock, ornamental plants, potted plants, roses, seed, sod, fruits, food crops grown in greenhouses, vegetables, and horticultural specialties not otherwise specified" per Section 5009 CFAC.

Annex A of this IB contains flowchart guides to assist in identifying whether a vehicle meets the definition of an IOH or FV. Once the definition of the vehicle is determined, the flowchart guides provide information related to registration or identification, and DL requirements.



Questions regarding this IB may be directed to the Commercial Vehicle Section, at (916) 843-3400.

OFFICE OF THE COMMISSIONER

OPI: 062



ANNEX A

IMPLEMENT OF HUSBANDRY AND FARM VEHICLE FLOWCHART GUIDES

IMPLEMENT OF HUSBANDRY AND FARM VEHICLE FLOWCHART GUIDES

ACRONYMS USED IN THIS DOCUMENT

AG (Agricultural)	lbs. (Pounds)
ATV (All-Terrain Vehicle)	mph (Miles per Hour)
CVC (California Vehicle Code)	MV (Motor Vehicle)
GVWR (Gross Vehicle Weight Rating)	SE (Special Equipment)
GW (Gross Weight)	UTV (Utility-Terrain Vehicle)

PAGES

Page 1 – Implement of Husbandry Identification – Section 36000 CVC
Page 2 – Implement of Husbandry Identification – Section 36005 CVC
Page 3 – Implement of Husbandry Identification – NOTES
Page 4 – Farm Vehicle Identification
Page 5 – Farm Vehicle Identification – NOTES
Page 6 – Implement of Husbandry and Farm Vehicle – Registration and Identification Requirements
Page 7 – Implement of Husbandry and Farm Vehicle – Driver License Requirements

INTRODUCTION

These flowchart guides may be used to determine if a vehicle meets the definition of an IOH or FV, and then determine registration or identification, and DL requirements. The information in these flowchart guides is not applicable to special construction equipment or special mobile equipment defined in Sections 565 and 575 CVC, respectively.

IMPORTANT INFORMATION

These flowchart guides are not all-encompassing and are only for identifying an IOH or FV, and to use as a quick reference to find the relevant CVC section(s). Refer to Division 16, IMPLEMENTS OF HUSBANDRY, in the CVC for specific requirements and exceptions relating to equipment, size, weight, load, and rules of the road relating to an IOH or FV.

Division 16, commencing with Section 36000, in the CVC is titled, IMPLEMENTS OF HUSBANDRY. Despite the title of the division, a vehicle is not an IOH unless specified by a section in the division (refer to Section 7 CVC).

Many definitions contain verbiage such as “solely” or “exclusively”. When this verbiage is used, it means the IOH or FV may be used only for the purpose described. When used for a purpose other than described, the vehicle is not an IOH or FV.

Many definitions specify who must own or operate the vehicle before it is defined as an IOH or FV.

The configuration or color of a vehicle has no meaning when defining an IOH or FV. For example, a front-end loader painted yellow and normally associated with construction work is an IOH when used exclusively in an agricultural operation.

The photographic examples depicted in these flowchart guides are not all-encompassing. A vehicle with a different appearance, otherwise meeting a definition specified, is an IOH or FV.

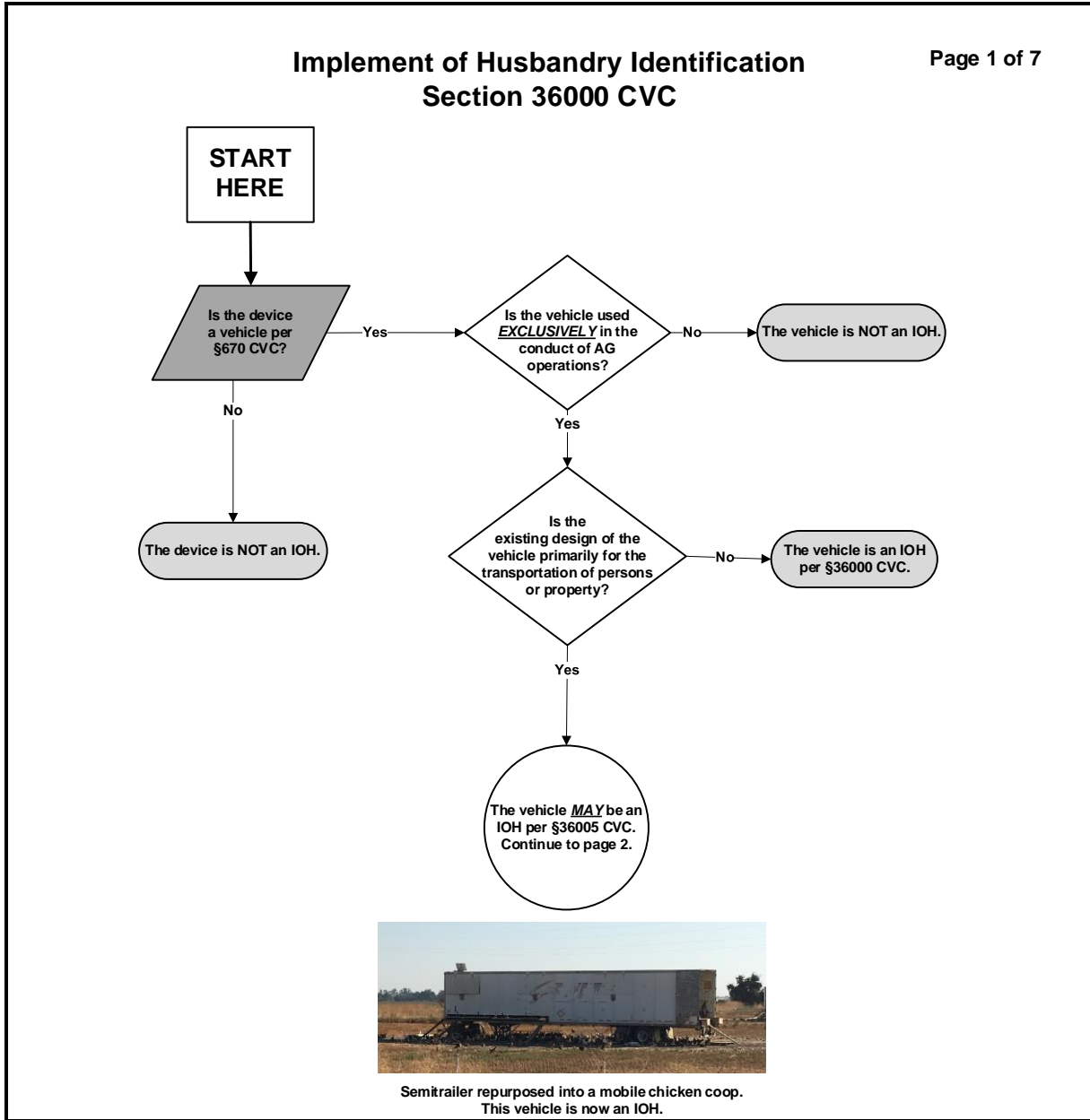
Start on Page 1

Laws change periodically. Please consult the appropriate CVC section.



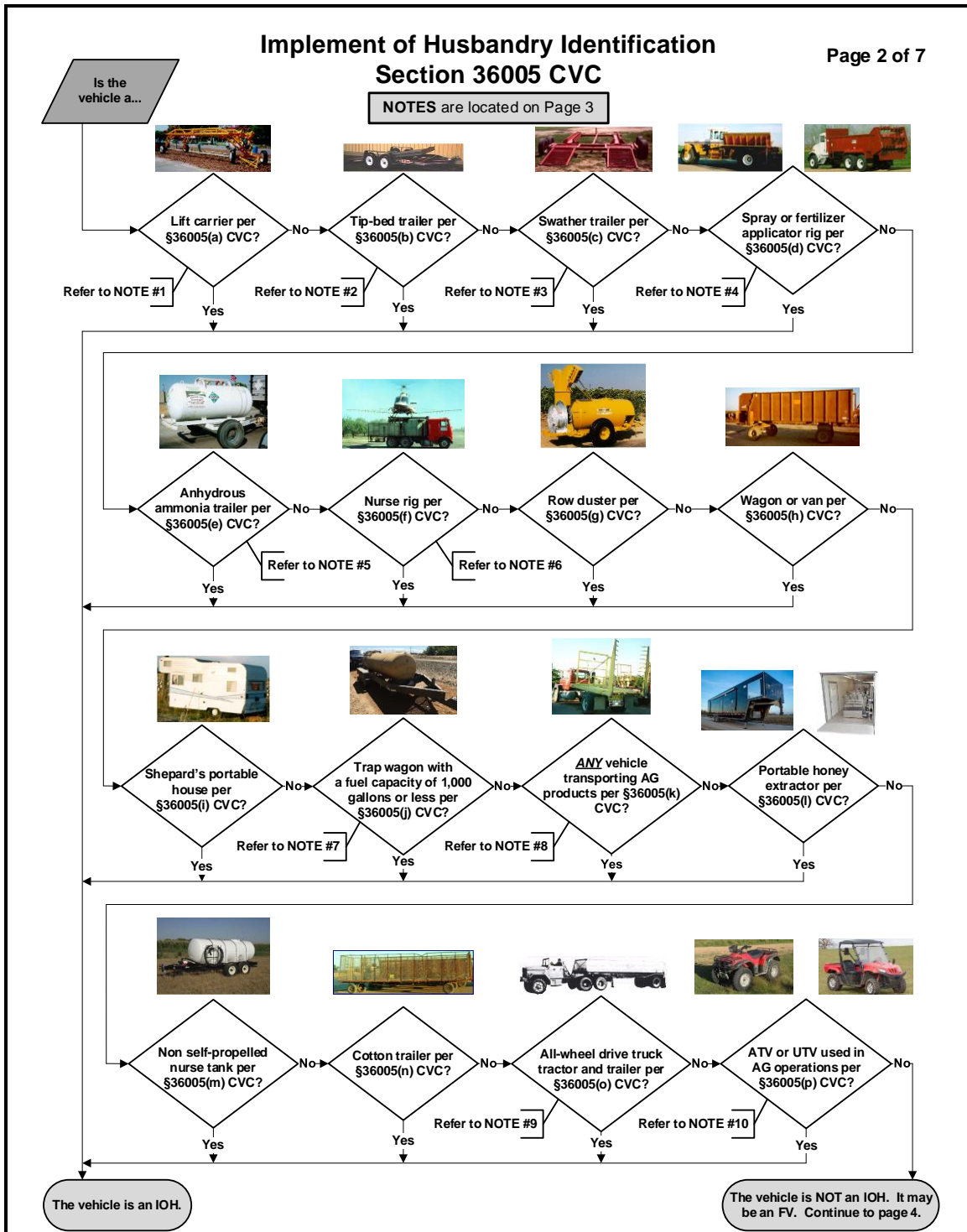
ANNEX A

IMPLEMENT OF HUSBANDRY AND FARM VEHICLE FLOWCHART GUIDES (*continued*)



ANNEX A

IMPLEMENT OF HUSBANDRY AND FARM VEHICLE FLOWCHART GUIDES (continued)



ANNEX A

IMPLEMENT OF HUSBANDRY AND FARM VEHICLE FLOWCHART GUIDES (*continued*)

Implement of Husbandry Identification NOTES

Page 3 of 7

NOTE #1 – A lift carrier shall not be operated at a speed in excess of 35 mph per Section 36400 CVC.

NOTE #2 – A tip-bed type trailer of any size, used as described in Section 36005(b) CVC, is an IOH.

NOTE #3 – The trailer must have no bed and be designed and used *solely* for transporting a hay loader or swather.

NOTE #4 – This definition includes a manure spreader. It does not include an anhydrous ammonia fertilizer applicator rig with a transportation capacity in excess of 500 gallons.

NOTE #5 – This vehicle is an FV when the following conditions are present:

The trailer or semitrailer must have a maximum capacity in excess of 500 gallons, but not more than 1,000 gallons, and be used *exclusively* for the transportation and application of anhydrous ammonia.

and;

The vehicle is either equipped with operating brakes or is towed upon a highway by a motortruck with a GVWR of 1,500 lbs. or more.

Pursuant to Section 36005(e) CVC, the FV must be equipped with stoplamps if the stoplamps on the towing vehicle are not clearly visible. Additionally, when this FV is in a combination of vehicles, the number of vehicles is limited to two.

NOTE #6 – Section 36005(f) CVC specifies the nurse rig is to be used to support an applicator rig or airplane. Although not stated in the statute, a nurse rig used as specified to support a helicopter is included in this definition.

NOTE #7 – Trap wagon is defined in Section 36016 CVC.

NOTE #8 – Any vehicle, including an FV, operated only for the purposes of transporting an agricultural product and operated for a distance of not more than one mile from the point of origin of the trip is an IOH per Section 36005(k) CVC.

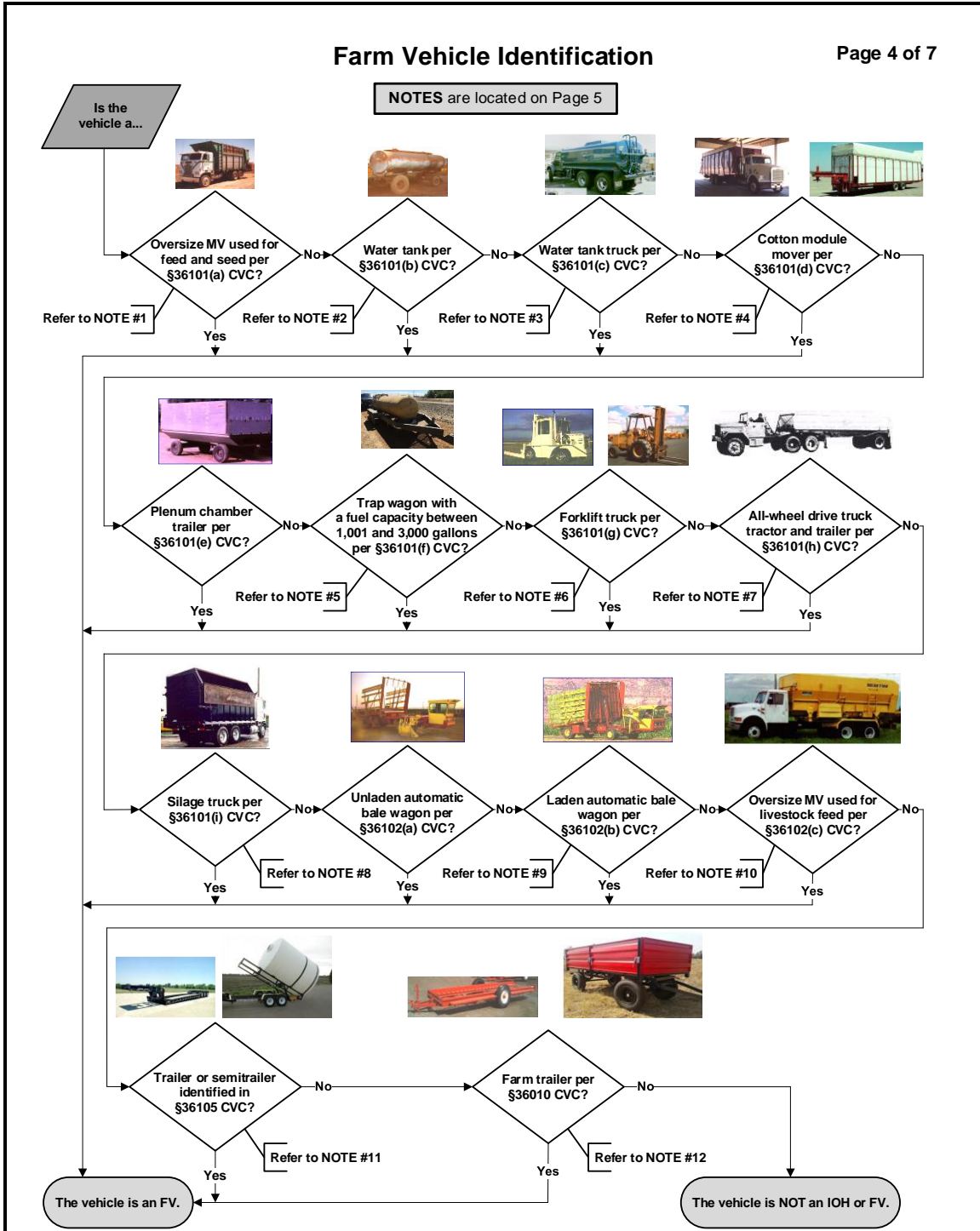
NOTE #9 – The vehicle must meet all specified requirements in Section 36005(o) CVC to be defined as an IOH. Additionally, these vehicles shall not be operated at a speed in excess of 25 mph upon a highway.

NOTE #10 – An ATV and UTV are defined in Sections 111 and 531 CVC, respectively.



ANNEX A

IMPLEMENT OF HUSBANDRY AND FARM VEHICLE FLOWCHART GUIDES (continued)



ANNEX A

IMPLEMENT OF HUSBANDRY AND FARM VEHICLE FLOWCHART GUIDES (*continued*)

Farm Vehicle Identification NOTES

Page 5 of 7

NOTE #1 – The vehicle must be an MV and of a size requiring an extralegal permit per Section 35780 CVC.

NOTE #2 – The definition includes any vehicle, including an MV. Must be owned by a farmer and used *exclusively* to service their own IOH.

NOTE #3 – The water tank truck must be owned by a farmer, not operated for compensation and used in an AG operation, and used *exclusively* for sprinkling water on dirt roads providing access to AG fields or transporting water for the irrigation of crops or trees.

NOTE #4 – A cotton module mover is a motortruck, semitrailer, or a truck tractor, in combination with a semitrailer, that is equipped with a self-loading bed and is designed and used *exclusively* to transport field manufactured cotton modules to a cotton gin. Refer to Section 36012 CVC for specific operating conditions.

NOTE #5 – Trap wagon is defined in Section 36016 CVC.

NOTE #6 – The forklift must be operated by a farmer, not for compensation.

NOTE #7 – The vehicle must meet all specified requirements in Section 36101(h) CVC to be defined as an FV. Refer to the section for limits on operational distances. Additionally, these vehicles shall not be operated at a speed in excess of 25 mph upon a highway.

NOTE #8 – The vehicle must be an MV specifically designed for, and used *exclusively* in, an AG operation for the purpose of carrying, or returning empty from carrying, silage that is operated by a farmer, an employee of the farmer, or a contracted employee of the farmer between one part of a farm to another part of that farm or from one farm to another farm, on a highway for a distance not to exceed 20 miles from the point of origin of the trip. Does not include transportation of silage for retail sales. Refer to Section 36101(i) CVC for the definition of silage.

This vehicle is not defined as an FV when used for any purpose other than transporting silage, such as towing an IOH, trailer, or other vehicle.

NOTE #9 – The vehicle may be operated for no more than five continuous road miles on a highway from one parcel of property owned, leased, or controlled by a farmer to another parcel of property, owned, leased, or controlled by that farmer.

NOTE #10 – The vehicle must be an MV designed for, and used *exclusively* to haul feed for livestock. Must be owned and operated *exclusively* by a farmer or employer of a farmer. Must be of a size requiring an extralegal permit per Section 35780 CVC and only operated on highways maintained by local authorities for a distance of not more than five continuous road miles from one parcel of property owned, leased, or controlled by a farmer to another parcel of property, owned, leased, or controlled by the farmer.

NOTE #11 – The vehicle must be owned by a farmer and used *exclusively* to haul their own IOH, portable sanitary facility, shade trailer, or tools used *exclusively* for the AG operation. Tools are any device used in the AG operation (e.g., ladders, water tanks, plows, disc harrow).

NOTE #12 – A farm trailer is either of the following:

A trailer or semitrailer owned and operated by a farmer in the conduct of AG operations, and used *exclusively* to transport AG products upon the highway to the point of first handling.

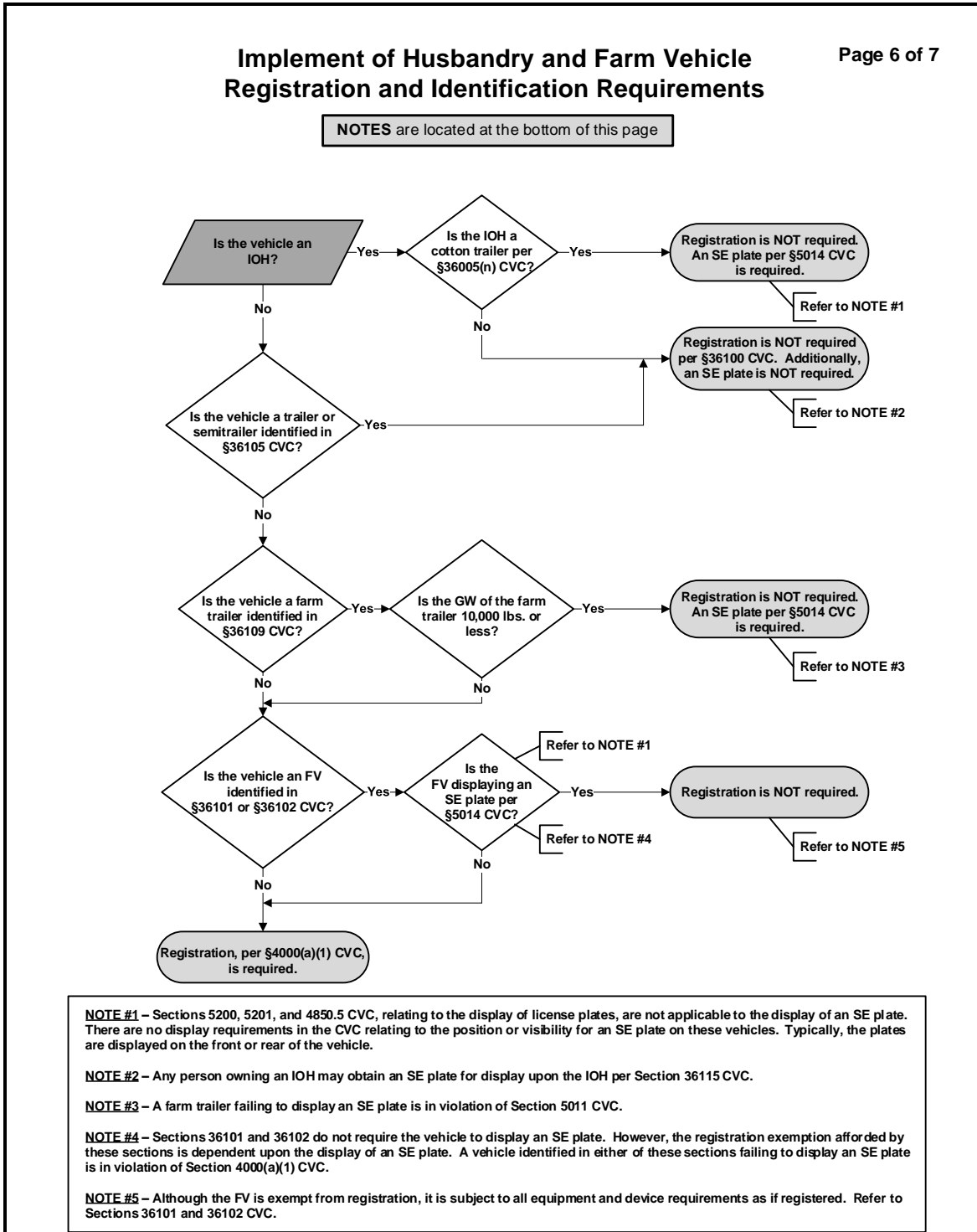
or;

A trailer or semitrailer equipped with rollers on the bed, with a frame not taller than 10 inches high, and with a GVWR of 10,000 lbs. or less, that is owned, rented, or leased by a farmer and operated by that farmer in the conduct of AG operations, used *exclusively* to transport fruits and vegetables upon the highway to the point of first handling and return, that was manufactured and in use prior to January 1, 1997. The vehicle may be operated on the highway without a load for the purposes of delivering it to the renting or leasing farmer's farm, or returning empty to the owner's premises.



ANNEX A

IMPLEMENT OF HUSBANDRY AND FARM VEHICLE FLOWCHART GUIDES (*continued*)



ANNEX A

IMPLEMENT OF HUSBANDRY AND FARM VEHICLE FLOWCHART GUIDES (*continued*)

